



**REGO-FIX**   
Swiss Machining Catalog



## Solutions for Swiss machining from the inventor of the ER collet

REGO-FIX manufactures the most accurate and widest selection of collets and cylindrical toolholders in the world. As the demand for more accuracy in many Swiss machine applications has grown, our offerings and precision have expanded to meet these needs.

Options include:

- // Cylindrical shanks
- // Cylindrical shanks with flats
- // Doubled ended cylindricals
- // SwissQuick collet adapters
- // reCool coolant inducers
- // Microbore collets
- // Floating and mini-floating holders

All of these cylindrical holders and adapters come with our patented Hi-Q design to provide ample clearance and clamping force. Additionally, all mini-threaded holders can be fitted with the intRlox anti-slip nut for additional safety.



## Table of contents

### ER Toolholders

<b>Cylindricals (CYL / ER)</b> – Straight Shank with Standard Nut	6
<b>Cylindricals (CYL / ERM &amp; ERMX)</b> – Straight Shank with Mini Nut	8
<b>Cylindricals (CYLF / ERM &amp; ERMX)</b> – Straight Shank with Clamping Flats and Mini Nut	10
<b>Cylindricals (CYL / ER NC)</b> – Straight Shank with Clamping Flats and Standard Nut	13
<b>Cylindricals (CYDF / ERM &amp; ERMX)</b> – Doubled-ended Straight Shank with Clamping Flats and Mini Nut	14
<b>Floating Holders (PH, PHC)</b> – Standard with and without Coolant-thru	16
<b>Floating Holders (MPH, MPH C)</b> – Mini with and without Coolant-thru	18
<b>Collet Reducers (SwissQuick)</b> – ER to ER reducers, available with ER, ERM, and ERMX Nut Profiles	20

### ER Collets

<b>Microbore (ER-MB)</b> – 6 µm maximum TIR, available ER 8–ER 16	22
<b>Standard (ER)</b> – 10 µm maximum TIR, available ER 8–ER 32	23
<b>Ultra-Precision (ER-UP)</b> – 5 µm maximum TIR, available ER 8–ER 32	23
<b>Metallic Sealed (ER-DM)</b> – 6 µm maximum TIR, available ER 11–ER 32	29
<b>CoolBore (ER-CB)</b> – 6 µm maximum TIR, available ER 16–ER 32	33
<b>Rigid Tapping (ER-GB)</b> – 10 µm maximum TIR, available ER 11–ER 32	34
<b>Axial-Compensating Tapping (ET-1)</b> – 10 µm maximum TIR, available ER 11–ER 32	36

### ER Hi-Q® Clamping Nuts

<b>Standard (ER)</b> – Standard and Coolant options available; ER 11–ER 32	38
<b>Bearing (ERB)</b> – Standard and Coolant options available; ER 16–ER 32	40
<b>Mini High-Speed (ERMS)</b> – Mini Nut for high-speed applications; available ER 8–ER 20	41
<b>Mini (ERM)</b> – Standard and Coolant options available; ER 8–ER 25	42
<b>intRlox® Mini (ERMx)</b> – Standard and Coolant options available; ER 8–ER 25	44
<b>External Thread (ERAX)</b> – Standard and Coolant options available; ER 11–ER 32	46
<b>reCool Static (RCS)</b> – Static unit with fine-pitch threads; ER 16–ER 20	48
<b>reCool Rotary (RCR)</b> – Rotary unit with fine-pitch or coarse threads; ER 11–ER 32	50
<b>reCool External Thread (RCR / ERAX)</b> – Externally threaded unit; ER 16–ER 32	52
<b>reCool High-Speed (RCR / Hi-S)</b> – Up to 40,000 RPM high-speed unit; ER 11–ER 16	53

### ER Accessories

<b>Sealing Disks (DS / ER)</b> – Coolant-thru sealing disks; available ER 11–ER 32	54
<b>Coolant-flush Disk (KS / ER)</b> – Coolant-flush sealing disks; available ER 11–ER 32	57
<b>Wrench Accessories</b> – Spanner wrenches, wrench heads, torque wrenches, and extensions	60

### Technical Information

<b>Torque Charts</b> – REGO-FIX recommended torque values in ft-lbs and Nm	62
--	----

# Cylindrical shank toolholders CYL

CYL/CYLF/CYDF

## Features and benefits

**Runout TIR  $\leq 3 \mu\text{m}$  for CYL/ERM and CYL/ERMX**

Measured from inner taper to outer shank.

**Runout TIR  $\leq 5 \mu\text{m}$  for CYLF/ERM and CYLF/ERMX**

Measured from inner taper to outer shank.

**Runout TIR  $\leq 5 \mu\text{m}$  for CYDF/ERM and CYDF/ERMX**

Measured from inner taper to outer shank.

**Surface finish max. Ra 0.25**

Achieve high clamping force and high transferable torque.

### Sizes

ER 8–ER 32  
h6 tolerance on shanks.

### Types

- // With or without clamping flat
- // Double ER holders

*Accessories are not included in delivery*

### Expert advice

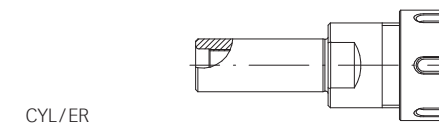
We recommend tightening the clamping nuts with our torque wrench.

*For tightening torque recommendations, please refer to page 63.*



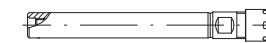
# Available CYL toolholders and their key characteristics

Cylindrical REGO-FIX toolholders are designed for automatic turning machines and can also be utilized as extensions. We offer many different product types to fit your machining needs.



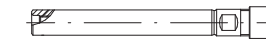
CYL/ER

**CYL/ER** The short versions are particularly used on turret lathes, where a short overhang is often required.  
*For technical dimensions, please refer to page 6.*



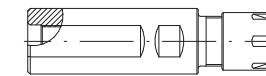
CYL/ERM

**CYL/ERM** This type is suited for Swiss automatic machines, machining centers and conventional machines. Can be used as extension.  
*For technical dimensions, please refer to page 8.*



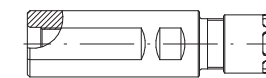
CYL/ERMX

**CYL/ERMX** This type is suited for Swiss automatic machines, machining centers and conventional machines. The slip-off proof mini clamping nut intrRlox® prevents injuries caused by slipping off while tightening the nut. Can be used as extension.  
*For technical dimensions, please refer to page 8.*



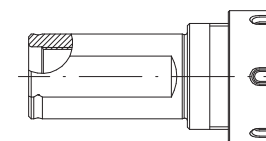
CYLF/ERM

**CYLF/ERM** The line of cylindrical toolholders with clamping flat is particularly designed for Swiss automatic CNC machines, e.g., Citizen, Manurhin, Star or Tornos. Cannot be used as extension.  
*For technical dimensions, please refer to page 10.*



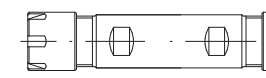
CYLF/ERMX

**CYLF/ERMX** The line of cylindrical toolholders with clamping flat is particularly designed for Swiss automatic CNC machines, e.g., Citizen, Manurhin, Star or Tornos. The slip-off proof mini clamping nut intrRlox® prevents injuries caused by slipping off while tightening the nut. Cannot be used as extension.  
*For technical dimensions, please refer to page 10.*



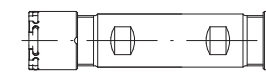
CYL/ER NC

**CYL/ER NC** These toolholders are particularly suitable on Swiss automatic CNC turning machines, but can also be used on other turning machines.  
*For technical dimensions, please refer to page 13.*



CYDF/ERM

**CYDF/ERM** The line of double toolholders with clamping flat has been designed for Swiss automatic CNC machines, e.g., Citizen, Manurhin, Star or Tornos and offers the possibility to hold two cutting tools on the same toolholder.  
*For technical dimensions, please refer to page 14.*



CYDF/ERMX

**CYDF/ERMX** The line of double toolholders with clamping flat has been designed for Swiss Automatic CNC machines, e.g., Citizen, Manurhin, Star or Tornos, and offers the possibility to hold two cutting tools on the same toolholder. The slip-off proof mini clamping nut intrRlox® prevents injuries caused by slipping off while tightening the nut.  
*For technical dimensions, please refer to page 14.*

## CYL/ER toolholders

Type	Part no.	Dimensions [mm]						Accessory	
		D	D1 h6	L	L1	G1	G2	Wrench	
<b>CYL 1/2 [inch]</b>									
CYL 1/2" x 070/ER 11	2613.11141	19	12.7	70	28.5	M 6	M 6	E 11 P	
CYL 1/2" x 100/ER 16	2613.11661	28	12.7	100	36	M 6	M 6	E 16 P	
CYL 1/2" x 100/ER 20	2613.12061	34	12.7	100	44.5	M 6	M 6	E 20 P	
<b>CYL 14 [mm]</b>									
CYL 14 x 060/ER 16	2614.11630	28	14	60	36.5	M 6	M 6	E 16 P	
<b>CYL 16 [mm]</b>									
CYL 16 x 060/ER 16	2616.11630	28	16	60	36.5	M 8 x 1	-	E 16 P	
<b>CYL 5/8 [inch]</b>									
CYL 5/8" x 060/ER 16	2616.11631	28	15.875	60	36.5	M 8 x 1	-	E 16 P	
CYL 5/8" x 100/ER 20	2616.12061	34	15.875	100	44.5	M 8 x 1	M 8 x 1	E 20 P	
<b>CYL 3/4 [inch]</b>									
CYL 3/4" x 050/ER 16	2619.11621	28	19.05	50	30.5	M 12 x 1	-	E 16 P	
CYL 3/4" x 100/ER 16	2619.11661	28	19.05	100	30.5	M 12 x 1	M 11 x 1	E 16 P	
CYL 3/4" x 060/ER 20	2619.12031	34	19.05	60	36.5	M 12 x 1	-	E 20 P	
CYL 3/4" x 050/ER 25	2619.12521	42	19.05	50	47	M 12 x 1	-	E 25	
<b>CYL 20 [mm]</b>									
CYL 20 x 050/ER 16	2620.11620	28	20	50	30.5	M 12 x 1	-	E 16 P	
CYL 20 x 100/ER 16	2620.11660	28	20	100	30.5	M 12 x 1	M 11 x 1	E 16 P	
CYL 20 x 030/ER 20	2620.12010	34	20	30	36.5	M 12 x 1	-	E 20 P	
CYL 20 x 060/ER 20	2620.12030	34	20	60	36.5	M 12 x 1	-	E 20 P	
CYL 20 x 050/ER 25	2620.12520	42	20	50	47	M 12 x 1	-	E 25	
CYL 20 x 100/ER 25	2620.12560	42	20	100	47	M 12 x 1	M 12 x 1	E 25	
CYL 20 x 050/ER 32	2620.13220	50	20	50	54	M 12 x 1	-	E 32	
CYL 20 x 100/ER 32	2620.13260	50	20	100	54	M 12 x 1	M 12 x 1	E 32	
<b>CYL 25 [mm]</b>									
CYL 25 x 050/ER 25	2625.12520	42	25	50	47	M 18 x 1.5	-	E 25	
CYL 25 x 100/ER 25	2625.12560	42	25	100	47	M 18 x 1.5	M 18 x 1.5	E 25	
CYL 25 x 050/ER 32	2625.13220	50	25	50	54	M 18 x 1.5	-	E 32	

Included in delivery: toolholders come with HI-Q®/ER clamping nut and back-up screw

## CYL/ER toolholders

Type	Part no.	Dimensions [mm]						Accessory	
		D	D1 h6	L	L1	G1	G2	Wrench	
<b>CYL 1 [inch]</b>									
CYL 1" x 100/ER 20	2625.12061	34	25.4	100	39.5	M 14 x 1	M 14 x 1	E 20 P	
CYL 1" x 050/ER 25	2625.12521	42	25.4	50	47	M 18 x 1.5	-	E 25	
CYL 1" x 100/ER 25	2625.12561	42	25.4	100	47	M 18 x 1.5	M 18 x 1.5	E 25	
CYL 1" x 050/ER 32	2625.13221	50	25.4	50	53	M 18 x 1.5	-	E 32	
<b>CYL 30 [mm]</b>									
CYL 30 x 050/ER 25	2630.12520	42	30	50	42	M 18 x 1.5	-	E 25	
<b>CYL 1 1/4 [inch]</b>									
CYL 1 1/4" x 060/ER 32	2632.13231	50	31.75	60	53	M 22 x 1.5	-	E 32	

Included in delivery: toolholders come with HI-Q®/ER clamping nut and back-up screw

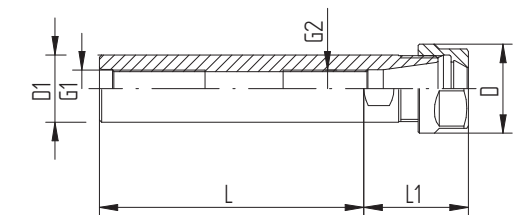


CYL/ER

## Coolant adapters\*

CGA M 12 x 1/1/8" NPT	7239.12181
CGA M 14 x 1/1/4" NPT	7239.14141
CGA M 18 x 1.5/1/4" NPT	7239.18141
CGA M 22 x 1.5/1/4" NPT	7239.22141

Converts back-up screw threads to coolant port for through coolant applications  
\*USA only



CYL/ER

## CYL/ERM toolholders (mini clamping nut)

## CYL/ERMX toolholders with intRlox® (slip-off proof mini clamping nut)

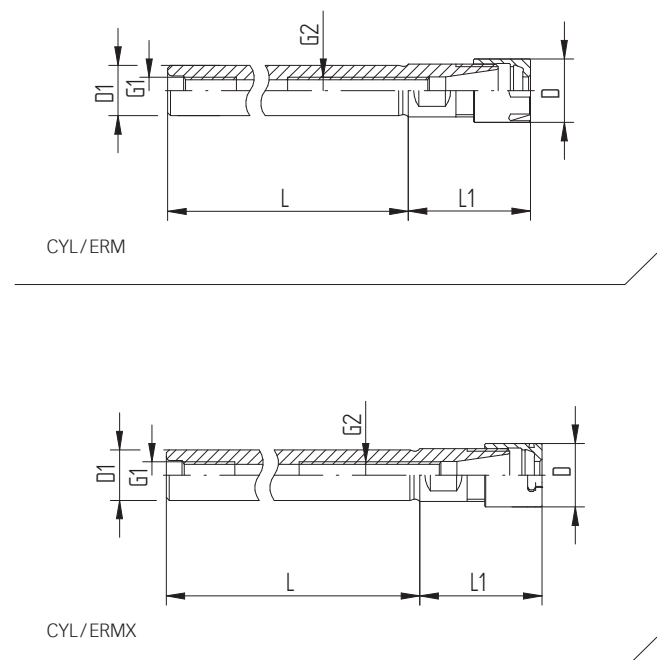
Type	Part no.	Dimensions [mm]				G1	G2	Slip-off proof	Accessory Wrench
		D	D1 h6	L	L1				
<b>CYL 6 [mm]</b>									
CYL 6 x 045/ERM 11	2606.21120	16	6	45	26.5	–	–	–	E 11 M
CYL 6 x 045/ERMX 11	4606.21120	16	6	45	26.5	–	–	•	E 11 MX
<b>CYL 7 [mm]</b>									
CYL 7 x 045/ERM 11	2607.21120	16	7	45	26.5	–	–	–	E 11 M
CYL 7 x 045/ERMX 11	4607.21120	16	7	45	26.5	–	–	•	E 11 MX
<b>CYL 8 [mm]</b>									
CYL 8 x 080/ERM 8	2608.20850	12	8	80	26	M 5	–	–	E 8 M
CYL 8 x 080/ERMX 8	4608.20850	12	8	80	26	M 5	–	•	E 8 MX
CYL 8 x 056/ERM 11	2608.21130	16	8	56	26.5	M 5	–	–	E 11 M
CYL 8 x 056/ERMX 11	4608.21130	16	8	56	26.5	M 5	–	•	E 11 MX
<b>CYL 3/8 [inch]</b>									
CYL 3/8" x 070/ERM 8	2609.20841	12	9.525	70	23	M 5	M 5	–	E 8 M
CYL 3/8" x 070/ERMX 8	4609.20841	12	9.525	70	23	M 5	M 5	•	E 8 MX
<b>CYL 10 [mm]</b>									
CYL 10 x 060/ERM 16	2610.21630	22	10	60	38.5	M 5	–	–	E 16 M
CYL 10 x 060/ERMX 16	4610.21630	22	10	60	38.5	M 5	–	•	E 16 MX
<b>CYL 12 [mm]</b>									
CYL 12 x 080/ERM 8	2612.20850	12	12	80	17	M 5	–	–	E 8 M
CYL 12 x 080/ERMX 8	4612.20850	12	12	80	17	M 5	–	•	E 8 MX
CYL 12 x 080/ERM 16	2612.21650	22	12	80	38.5	M 5	–	–	E 16 M
CYL 12 x 080/ERMX 16	4612.21650	22	12	80	38.5	M 5	–	•	E 16 MX
<b>CYL 1/2 [inch]</b>									
CYL 1/2" x 140/ERM 11	2613.21191	16	12.7	140	29.5	M 6	M 6	–	E 11 M
CYL 1/2" x 140/ERMX 11	4613.21191	16	12.7	140	29.5	M 6	M 6	•	E 11 MX
CYL 1/2" x 140/ERM 16	2613.21691	22	12.7	140	37	M 6	M 6	–	E 16 M
CYL 1/2" x 140/ERMX 16	4613.21691	22	12.7	140	37	M 6	M 6	•	E 16 MX
<b>CYL 16 [mm]</b>									
CYL 16 x 150/ERM 11	2616.21190	16	16	150	21	M 8 x 1	M 8 x 1	–	E 11 M
CYL 16 x 150/ERMX 11	4616.21190	16	16	150	21	M 8 x 1	M 8 x 1	•	E 11 MX
CYL 16 x 100/ERM 20	2616.22060	28	16	100	42.5	M 8 x 1	–	–	E 20 M
CYL 16 x 100/ERMX 20	4616.22060	28	16	100	42.5	M 8 x 1	–	•	E 20 MX

## CYL/ERM toolholders (mini clamping nut)

## CYL/ERMX toolholders with intRlox® (slip-off proof mini clamping nut)

Type	Part no.	Dimensions [mm]				G1	G2	Slip-off proof	Accessory Wrench
		D	D1 h6	L	L1				
<b>CYL 5/8 [inch]</b>									
CYL 5/8" x 150/ERM 11	2616.21191	16	15.875	150	19.5	M 8 x 1	M 8 x 1	–	E 11 M
CYL 5/8" x 150/ERMX 11	4616.21191	16	15.875	150	19.5	M 8 x 1	M 8 x 1	•	E 11 MX
<b>CYL 3/4 [inch]</b>									
CYL 3/4" x 155/ERM 16	2619.21691	22	19.05	155	26.5	M 12 x 1	–	–	E 16 M
CYL 3/4" x 155/ERMX 16	4619.21691	22	19.05	155	26.5	M 12 x 1	–	•	E 16 MX
CYL 3/4" x 100/ERM 25	2619.22561	35	19.05	100	47	M 12 x 1	M 12 x 1	–	E 25 M
CYL 3/4" x 100/ERMX 25	4619.22561	35	19.05	100	47	M 12 x 1	M 12 x 1	•	E 25 MX
<b>CYL 20 [mm]</b>									
CYL 20 x 155/ERM 16	2620.21690	22	20	155	25.5	M 12 x 1	M 11 x 1	–	E 16 M
CYL 20 x 155/ERMX 16	4620.21690	22	20	155	25.5	M 12 x 1	M 11 x 1	•	E 16 MX
<b>CYL 25 [mm]</b>									
CYL 25 x 155/ERM 20	2625.22090	28	25	155	27	M 14 x 1	M 14 x 1	–	E 20 M
CYL 25 x 155/ERMX 20	4625.22090	28	25	155	27	M 14 x 1	M 14 x 1	•	E 20 MX
<b>CYL 1 [inch]</b>									
CYL 1" x 155/ERM 20	2625.22091	28	25.4	155	27	M 14 x 1	M 14 x 1	–	E 20 M
CYL 1" x 155/ERMX 20	4625.22091	28	25.4	155	27	M 14 x 1	M 14 x 1	•	E 20 MX

Included in delivery: toolholders come with HI-Q®/ERM or HI-Q®/ERMX clamping nut and back-up screw



## CYLF/ERM toolholders (mini clamping nut)

## CYLF/ERMX toolholders with intRlox® (slip-off proof mini clamping nut)

Type	Part no.	Dimensions [mm]				G1	G2	Slip-off proof	Accessory Wrench
		D	D1 h6	L	L1				
<b>CYLF 12 [mm]</b>									
CYLF 12 x 043/ERM 8	2612.20822	12	12	43	17	M 5	–	–	E 8 M
CYLF 12 x 043/ERMX 8	4612.20822	12	12	43	17	M 5	–	•	E 8 MX
<b>CYLF 5/8 [inch]</b>									
CYLF 5/8" x 043/ERM 8	2616.20811	12	15.875	43	15.5	M 5	M 5	–	E 8 M
CYLF 5/8" x 043/ERMX 8	4616.20811	12	15.875	43	15.5	M 5	M 5	•	E 8 MX
<b>CYLF 16 [mm]</b>									
CYLF 16 x 038/ERM 11	2616.21112	16	16	38	19.5	M 8 x 1	–	–	E 11 M
CYLF 16 x 038/ERMX 11	4616.21112	16	16	38	16	M 8 x 1	–	•	E 11 MX
CYLF 16 x 050/ERM 11	2616.21122	16	16	50	16	M 8 x 1	–	–	E 11 M
CYLF 16 x 050/ERMX 11	4616.21122	16	16	50	16	M 8 x 1	–	•	E 11 MX
CYLF 16 x 140/ERM 11	2616.21192	16	16	140	19.5	M 8 x 1	M 8 x 1	–	E 11 M
CYLF 16 x 140/ERMX 11	4616.21192	16	16	140	19.5	M 8 x 1	M 8 x 1	•	E 11 MX
CYLF 16 x 035/ERM 16	2616.21612	22	16	35	36	M 8 x 1	–	–	E 16 M
CYLF 16 x 035/ERMX 16	4616.21612	22	16	35	36	M 8 x 1	–	•	E 16 MX
<b>CYLF 3/4 [inch]</b>									
CYLF 3/4" x 115/ERM 11	2619.21173	16	19.05	115	19.5	M 8 x 1	M 8 x 1	–	E 11 M
CYLF 3/4" x 115/ERMX 11	4619.21173	16	19.05	115	19.5	M 8 x 1	M 8 x 1	•	E 11 MX
CYLF 3/4" x 038/ERM 16	2619.21613	22	19.05	38	27.5	M 12 x 1	–	–	E 16 M
CYLF 3/4" x 038/ERMX 16	4619.21613	22	19.05	38	27.5	M 12 x 1	–	•	E 16 MX
CYLF 3/4" x 050/ERM 16	2619.21623	22	19.05	50	25	M 12 x 1	–	–	E 16 M
CYLF 3/4" x 050/ERMX 16	4619.21623	22	19.05	50	25	M 12 x 1	–	•	E 16 MX
CYLF 3/4" x 070/ERM 16	2619.21643	22	19.05	70	29.5	M 12 x 1	–	–	E 16 M
CYLF 3/4" x 070/ERMX 16	4619.21643	22	19.05	70	29.5	M 12 x 1	–	•	E 16 MX
CYLF 3/4" x 120/ERM 16	2619.21683	22	19.05	120	27.5	M 12 x 1	M 11 x 1	–	E 16 M
CYLF 3/4" x 120/ERMX 16	4619.21683	22	19.05	120	27.5	M 12 x 1	M 11 x 1	•	E 16 MX
CYLF 3/4" x 140/ERM 16	2619.21693	22	19.05	140	27.5	M 12 x 1	M 11 x 1	–	E 16 M
CYLF 3/4" x 140/ERMX 16	4619.21693	22	19.05	140	27.5	M 12 x 1	M 11 x 1	•	E 16 MX

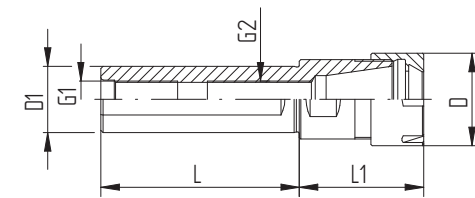
Included in delivery: toolholders come with Hi-Q®/ERM or Hi-Q®/ERMx clamping nut and back-up screw

## CYLF/ERM toolholders (mini clamping nut)

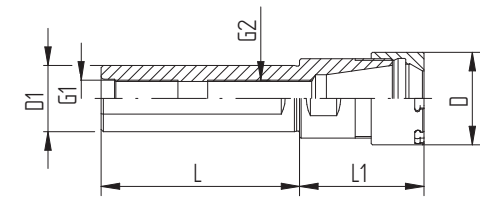
## CYLF/ERMx toolholders with intRlox® (slip-off proof mini clamping nut)

Type	Part no.	Dimensions [mm]				G1	G2	Slip-off proof	Accessory Wrench
		D	D1 h6	L	L1				
<b>CYLF 20 [mm]</b>									
CYLF 20 x 060/ERM 11	2620.21132	16	20	60	19.5	M 8 x 1	–	–	E 11 M
CYLF 20 x 060/ERMx 11	4620.21132	16	20	60	19.5	M 8 x 1	–	•	E 11 MX
CYLF 20 x 038/ERM 16	2620.21612	22	20	38	26.5	M 12 x 1	–	–	E 16 M
CYLF 20 x 038/ERMx 16	4620.21612	22	20	38	26.5	M 12 x 1	–	•	E 16 MX
CYLF 20 x 050/ERM 16	2620.21622	22	20	50	27.5	M 12 x 1	–	–	E 16 M
CYLF 20 x 050/ERMx 16	4620.21622	22	20	50	27.5	M 12 x 1	–	•	E 16 MX
CYLF 20 x 070/ERM 16	2620.21642	22	20	70	27.5	M 12 x 1	–	–	E 16 M
CYLF 20 x 070/ERMx 16	4620.21642	22	20	70	27.5	M 12 x 1	–	•	E 16 MX
CYLF 20 x 120/ERM 16	2620.21682	22	20	120	27.5	M 12 x 1	M 11 x 1	–	E 16 M
CYLF 20 x 120/ERMx 16	4620.21682	22	20	120	27.5	M 12 x 1	M 11 x 1	•	E 16 MX
CYLF 20 x 140/ERM 16	2620.21692	22	20	140	27.5	M 12 x 1	M 11 x 1	–	E 16 M
CYLF 20 x 140/ERMx 16	4620.21692	22	20	140	27.5	M 12 x 1	M 11 x 1	•	E 16 MX
<b>CYLF 22 [mm]</b>									
CYLF 22 x 038/ERM 16	2622.21612	22	22	38	27.5	M 12 x 1	–	–	E 16 M
CYLF 22 x 038/ERMx 16	4622.21612	22	22	38	27.5	M 12 x 1	–	•	E 16 MX
CYLF 22 x 070/ERM 16	2622.21642	22	22	70	27.5	M 12 x 1	–	–	E 16 M
CYLF 22 x 070/ERMx 16	4622.21642	22	22	70	27.5	M 12 x 1	–	•	E 16 MX
CYLF 22 x 100/ERM 16	2622.21662	22	22	100	27.5	M 12 x 1	M 11 x 1	–	E 16 M
CYLF 22 x 100/ERMx 16	4622.21662	22	22	100	27.5	M 12 x 1	M 11 x 1	•	E 16 MX
CYLF 22 x 080/ERM 20	2622.22052	28	22	80	39	M 12 x 1	M 12 x 1	–	E 20 M
CYLF 22 x 080/ERMx 20	4622.22052	28	22	80	39	M 12 x 1	M 12 x 1	•	E 20 MX

Included in delivery: toolholders come with Hi-Q®/ERM or Hi-Q®/ERMx clamping nut and sealing back-up screw



CYLF/ERM



CYLF/ERMx

## CYLF/ERM toolholders (mini clamping nut)

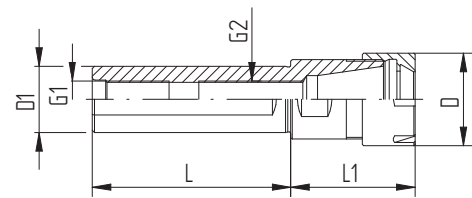
## CYLF/ERMX toolholders with intrRlox® (slip-off proof mini clamping nut)

Type	Part no.	Dimensions [mm]					G1	G2	Slip-off proof	Accessory Wrench
		D	D1 h6	L	L1	G				
<b>CYLF 25 [mm]</b>										
CYLF 25 x 065/ERM 16	2625.21642	22	25	65	27.5	M 12 x 1	-	-	-	E 16 M
CYLF 25 x 065/ERMX 16	4625.21642	22	25	65	27.5	M 12 x 1	-	•	•	E 16 MX
CYLF 25 x 100/ERM 20	2625.22062	28	25	100	28	M 14 x 1	M 14 x 1	-	-	E 20 M
CYLF 25 x 100/ERMX 20	4625.22062	28	25	100	28	M 14 x 1	M 14 x 1	•	•	E 20 MX
CYLF 25 x 154/ERM 20	2625.22002	28	25	154	28	M 14 x 1	M 14 x 1	-	-	E 20 M
CYLF 25 x 154/ERMX 20	4625.22002	28	25	154	28	M 14 x 1	M 14 x 1	•	•	E 20 MX
CYLF 25 x 075/ERM 25	2625.22552	35	25	75	47	M 14 x 1	M 14 x 1	-	-	E 25 M
CYLF 25 x 075/ERMX 25	4625.22552	35	25	75	47	M 14 x 1	M 14 x 1	•	•	E 25 MX
CYLF 25 x 145/ERM 25	2625.22592	35	25	145	36	M 14 x 1	M 14 x 1	-	-	E 25 M
CYLF 25 x 145/ERMX 25	4625.22592	35	25	145	36	M 14 x 1	M 14 x 1	•	•	E 25 MX

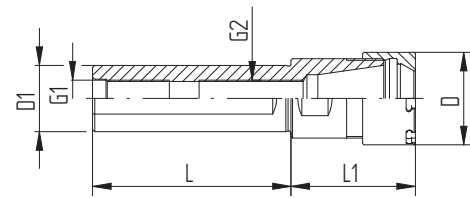
<b>CYLF 1 [inch]</b>										
Type	Part no.	D	D1 h6	L	L1	G1	G2	Slip-off proof	Accessory Wrench	
CYLF 1" x 033/ERM 16	2625.21613	22	25.4	33	28	M 12 x 1	-	-	E 16 M	
CYLF 1" x 033/ERMX 16	4625.21613	22	25.4	33	28	M 12 x 1	-	•	E 16 MX	
CYLF 1" x 065/ERM 16	2625.21643	22	25.4	65	27.5	M 12 x 1	-	-	E 16 M	
CYLF 1" x 065/ERMX 16	4625.21643	22	25.4	65	27.5	M 12 x 1	-	•	E 16 MX	
CYLF 1" x 075/ERM 16	2625.21653	22	25.4	75	27.5	M 12 x 1	-	-	E 16 M	
CYLF 1" x 075/ERMX 16	4625.21653	22	25.4	75	27.5	M 12 x 1	-	•	E 16 MX	
CYLF 1" x 100/ERM 16	2625.21663	22	25.4	100	27.5	M 12 x 1	M 11 x 1	-	E 16 M	
CYLF 1" x 100/ERMX 16	4625.21663	22	25.4	100	27.5	M 12 x 1	M 11 x 1	•	E 16 MX	
CYLF 1" x 100/ERM 20	2625.22063	28	25.4	100	27.5	M 14 x 1	M 14 x 1	-	E 20 M	
CYLF 1" x 100/ERMX 20	4625.22063	28	25.4	100	27.5	M 14 x 1	M 14 x 1	•	E 20 MX	
CYLF 1" x 140/ERM 20	2625.22093	28	25.4	140	27.5	M 14 x 1	M 14 x 1	-	E 20 M	
CYLF 1" x 140/ERMX 20	4625.22093	28	25.4	140	27.5	M 14 x 1	M 14 x 1	•	E 20 MX	

<b>CYLF 32 [mm]</b>										
Type	Part no.	D	D1 h6	L	L1	G1	G2	Slip-off proof	Accessory Wrench	
CYLF 32 x 070/ERM 25	2632.22542	35	32	70	30	M 18 x 1.5	-	-	E 25 M	
CYLF 32 x 070/ERMX 25	4632.22542	35	32	70	30	M 18 x 1.5	-	•	E 25 MX	

Included in delivery: toolholders come with HI-Q®/ERM or HI-Q®/ERMX clamping nut and back-up screw



CYLF/ERM



CYLF/ERMX

## CYL/ER NC toolholders

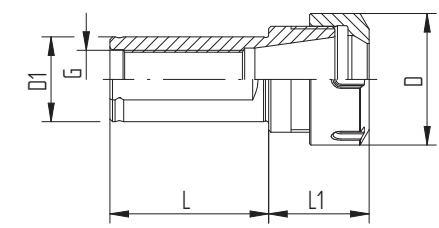
Type	Part no.	Dimensions [mm]					G	Accessory Wrench
		D	D1 h6	L	L1	G		
<b>CYL 1 1/4 [inch]*</b>								
CYL 1 1/4" x 060/ER NC 25	2632.12533	42	31.75	60	32	M 18 x 1.5	-	E 25
CYL 1 1/4" x 060/ER NC 32	2632.13233	50	31.75	60	38	M 22 x 1.5	-	E 32
<b>CYL 32 [mm]</b>								
CYL 32 x 060/ER NC 25	2632.12532	42	32	60	32	M 18 x 1.5	-	E 25
CYL 32 x 060/ER NC 32	2632.13232	50	32	60	38	M 22 x 1.5	-	E 32
<b>CYL 1 1/2 [inch]*</b>								
CYL 1 1/2" x 080/ER NC 32	2638.13253	50	38.1	80	33	M 22 x 1.5	-	E 32
<b>CYL 40 [mm]</b>								
CYL 40 x 080/ER NC 32	2640.13252	50	40	80	39	M 22 x 1.5	-	E 32

Included in delivery: toolholders come with HI-Q®/ER clamping nut and back-up screw

\*USA only



CYL/ER NC



CYL/ER NC

## CYDF/ERM toolholders (mini clamping nut)

## CYDF/ERM toolholders with intrRlox® (slip-off proof mini clamping nut)

Type	Part no.	Dimensions [mm]					Slip-off proof	Accessory Wrench
		D	D1 h6	L	L1	G		
<b>CYDF 12 [mm]</b>								
CYDF 12 x 015/ERM 8	2612.20804	12	12	15	46	-	-	E 8 M
CYDF 12 x 015/ERMX 8	4612.20804	12	12	15	46	-	•	E 8 MX
CYDF 12 x 025/ERM 8	2612.20814	12	12	25	56	-	-	E 8 M
CYDF 12 x 025/ERMX 8	4612.20814	12	12	25	56	-	•	E 8 MX
<b>CYDF 5/8 [inch]</b>								
CYDF 5/8" x 015/ERM 8	2616.20805	12	15.875	15	46	-	-	E 8 M
CYDF 5/8" x 025/ERM 8	2616.20895	12	15.875	25	56	-	-	E 8 M
CYDF 5/8" x 025/ERMX 8	4616.20895	12	15.875	25	56	-	•	E 8 MX
<b>CYDF 16 [mm]</b>								
CYDF 16 x 040/ERM 11	2616.21114	16	16	40	79	-	-	E 11 M
CYDF 16 x 040/ERMX 11	4616.21114	16	16	40	79	-	•	E 11 MX
CYDF 16 x 050/ERM 11	2616.21124	16	16	50	89	-	-	E 11 M
CYDF 16 x 050/ERMX 11	4616.21124	16	16	50	89	-	•	E 11 MX
<b>CYDF 3/4 [inch]</b>								
CYDF 3/4" x 040/ERM 11	2619.21125	16	19.05	40	79	-	-	E 11 M
CYDF 3/4" x 040/ERMX 11	4619.21125	16	19.05	40	79	-	•	E 11 MX
CYDF 3/4" x 070/ERM 11	2619.21145	16	19.05	70	109	-	-	E 11 M
CYDF 3/4" x 070/ERMX 11	4619.21145	16	19.05	70	109	-	•	E 11 MX
CYDF 3/4" x 090/ERM 11	2619.21165	16	19.05	90	129	-	-	E 11 M
CYDF 3/4" x 090/ERMX 11	4619.21165	16	19.05	90	129	-	•	E 11 MX
CYDF 3/4" x 055/ERM 16	2619.21635	22	19.05	55	107	-	-	E 16 M
CYDF 3/4" x 055/ERMX 16	4619.21635	22	19.05	55	107	-	•	E 16 MX
<b>CYDF 20 [mm]</b>								
CYDF 20 x 030/ERM 11	2620.21114	16	20	30	69	-	-	E 11 M
CYDF 20 x 030/ERMX 11	4620.21114	16	20	30	69	-	•	E 11 MX
CYDF 20 x 050/ERM 11	2620.21124	16	20	50	89	-	-	E 11 M
CYDF 20 x 050/ERMX 11	4620.21124	16	20	50	89	-	•	E 11 MX
CYDF 20 x 055/ERM 16	2620.21634	22	20	55	107	-	-	E 16 M
CYDF 20 x 055/ERMX 16	4620.21634	22	20	55	107	-	•	E 16 MX

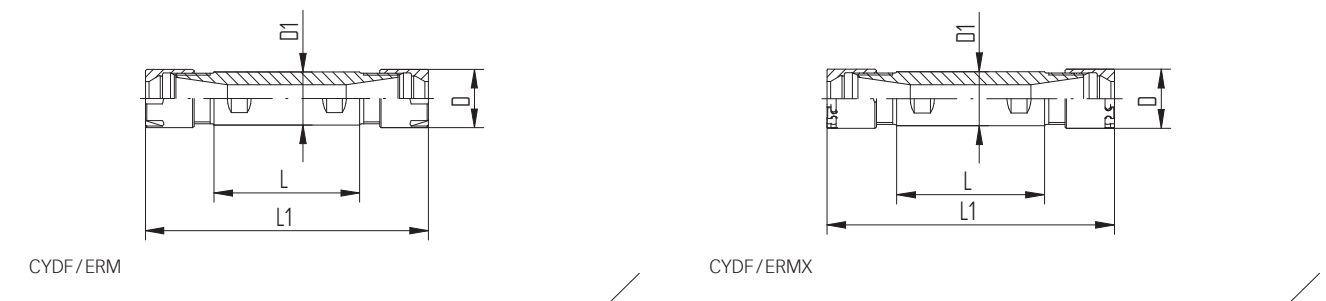
Included in delivery: toolholders come with two HI-Q®/ERM or HI-Q®/ERMX clamping nuts and back-up screw

## CYDF/ERM toolholders (mini clamping nut)

## CYDF/ERM toolholders with intrRlox® (slip-off proof mini clamping nut)

Type	Part no.	Dimensions [mm]					Slip-off proof	Accessory Wrench
		D	D1 h6	L	L1	G		
<b>CYDF 22 [mm]</b>								
CYDF 22 x 150/ERM 11	2622.21194	16	22	150	189	-	-	E 11 M
CYDF 22 x 040/ERM 16	2622.21624	22	22	40	80	-	-	E 16 M
CYDF 22 x 055/ERM 16	2622.21634	22	22	55	110	-	-	E 16 M
CYDF 22 x 055/ERMX 16	4622.21634	22	22	55	110	-	•	E 16 MX
CYDF 22 x 075/ERM 16	2622.21654	22	22	75	130	-	-	E 16 M
CYDF 22 x 075/ERMX 16	4622.21654	22	22	75	130	-	•	E 16 MX
<b>CYDF 25 [mm]</b>								
CYDF 25 x 062/ERM 16	2625.21634	22	25	62	117	-	-	E 16 M
CYDF 25 x 062/ERMX 16	4625.21634	22	25	62	117	-	•	E 16 MX
<b>CYDF 1 [inch]</b>								
CYDF 1" x 030/ERM 16	2625.21615	22	25.4	30	86	-	-	E 16 M
CYDF 1" x 030/ERMX 16	4625.21615	22	25.4	30	86	-	•	E 16 MX
CYDF 1" x 062/ERM 16	2625.21635	22	25.4	62	117	-	-	E 16 M
CYDF 1" x 062/ERMX 16	4625.21635	22	25.4	62	117	-	•	E 16 MX
<b>CYDF 32 [mm]</b>								
CYDF 32 x 055/ERM 20	2632.22034	28	32	55	110	-	-	E 20 M
CYDF 32 x 055/ERMX 20	4632.22034	28	32	55	110	-	•	E 20 MX
CYDF 32 x 075/ERM 20	2632.22054	28	32	75	130	-	-	E 20 M
CYDF 32 x 075/ERMX 20	4632.22054	28	32	75	130	-	•	E 20 MX

Included in delivery: toolholders come with two HI-Q®/ERM or HI-Q®/ERMX clamping nuts and back-up screw



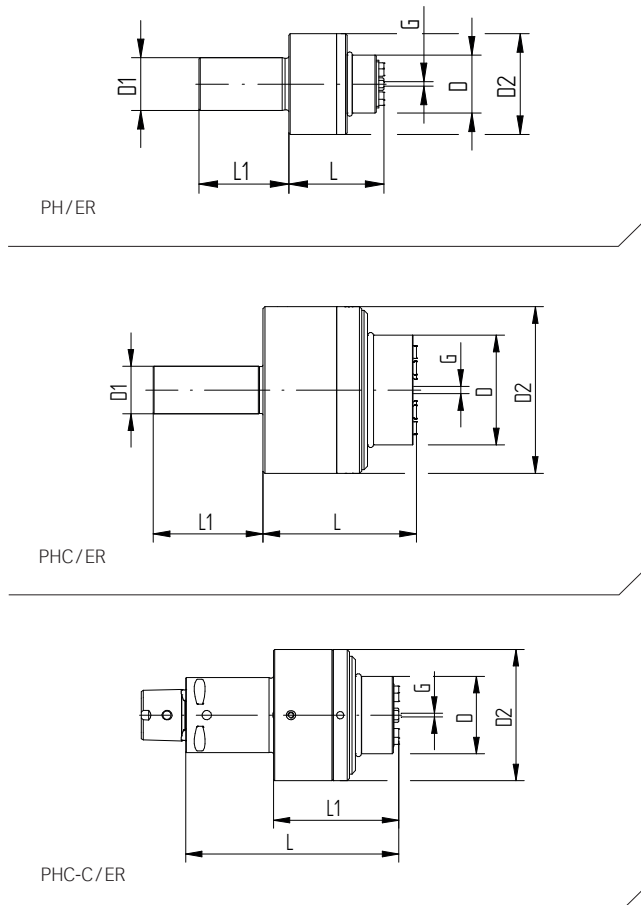


# ER floating chucks

When using reamers on lathes it is often necessary to compensate for axis error between the chuck and the bore to be machined. This error can be corrected by using a self-centering floating chuck.

Type	Part no.	Dimensions [mm]						G	Accessory Wrench
		D	D1 h6	D2	L	L1			
<b>PH 5/8 [inch]</b>									
PH 5/8" /ER 11	2616.91102	22	15.88	38	36	34	0.8	E 11 AX	
<b>PH 16 [mm]</b>									
PH 16/ER 11	2616.91100	22	16	38	36	34	0.8	E 11 AX	
<b>PH 3/4 [inch]</b>									
PH 3/4" /ER 11	2619.91102	22	19.05	38	36	34	0.8	E 11 AX	
<b>PH 20 [mm]</b>									
PH 20/ER 11	2620.91100	22	20	38	36	34	0.8	E 11 AX	
<b>PH 22 [mm]</b>									
PH 22/ER 11	2622.91100	22	22	38	36	34	0.8	E 11 AX	

Included in delivery: Floating holder comes with HI-Q®/ER clamping nut and wrench



# PHC floating chucks for coolant through tools

Type	Part no.	Dimensions [mm]						G	Accessory Wrench
		D	D1 h6	D2	L	L1			
<b>PHC 5/8 [inch]</b>									
PHC 5/8" /ER 20	2616.92004	33	15.88	56	53.5	38	1	E 20 AX	
<b>PHC 16</b>									
PHC 16/ER 20	2616.92003	33	16	56	53.5	38	1	E 20 AX	
<b>PHC 3/4 [inch]</b>									
PHC 3/4" /ER 20	2619.92004	33	19.05	56	53.5	38	1	E 20 AX	
PHC 3/4" /ER 32	2619.93204	46	19.05	70	64.5	46	1.5	E 32 AX	
<b>PHC 20 [mm]</b>									
PHC 20/ER 20	2620.92003	33	20	56	53.5	38	1	E 20 AX	
PHC 20/ER 32	2620.93203	46	20	70	64.5	46	1.5	E 32 AX	
<b>PHC 22 [mm]</b>									
PHC 22/ER 20	2622.92003	33	22	56	53.5	38	1	E 20 AX	
PHC 22/ER 32	2622.93203	46	22	70	64.5	46	1.5	E 32 AX	
<b>PHC 25 [mm]</b>									
PHC 25/ER 20	2625.92003	33	25	56	53.5	38	1	E 20 AX	
PHC 25/ER 32	2625.93203	46	25	70	64.5	46	1.5	E 32 AX	
<b>PHC 1 [inch]</b>									
PHC 1" /ER 20	2625.92004	33	25.4	56	53.5	38	1	E 20 AX	
PHC 1" /ER 32	2625.93204	46	25.4	70	64.5	46	1.5	E 32 AX	
<b>PHC 1 1/4 [inch]</b>									
PHC 1 1/4" /ER 32	2632.93204	46	31.75	70	64.5	46	1.5	E 32 AX	
<b>PHC 32 [mm]</b>									
PHC 32/ER 32	2632.93203	46	32	70	64.5	46	1.5	E 32 AX	
<b>PHC 1 3/4 [inch]</b>									
PHC 1 3/4" /ER 32	2644.93204	46	44.45	70	64.5	46	1.5	E 32 AX	
<b>PHC-CAPTO C3</b>									
PHC-C3/ER 20	2803.92003	33	56	91	53.5	0.8		E 20 AX	
<b>PHC-CAPTO C4</b>									
PHC-C4/ER 20	2804.92003	33	56	91	56.5	0.8		E 20 AX	
PHC-C4/ER 32	2804.93203	46	70	100	64	0.8		E 32 AX	

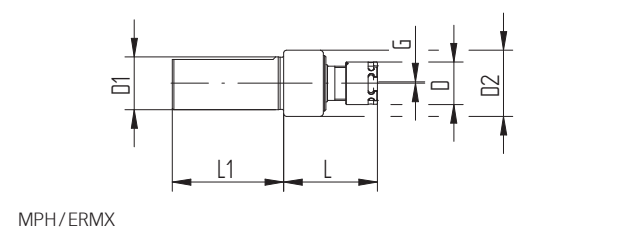
Included in delivery: Floating holder comes with HI-Q®/ERAX clamping nut and wrench

## MPH mini floating chucks with intrRlox®

(slip-off proof mini clamping nut)

Type	Part no.	Dimensions [mm]						Accessory	
		D	D1 h6	D2	L	L1	G	Wrench	
<b>MPH 8 [mm]</b>									
MPH 8/ERMX 11	4608.91107	16	8	25	35.5	42	0.5	E 11 MX	
<b>MPH 10 [mm]</b>									
MPH 10/ERMX 11	4610.91107	16	10	25	35.5	42	0.5	E 11 MX	
<b>MPH 16 [mm]</b>									
MPH 16/ERMX 11	4616.91107	16	16	25	35.5	42	0.5	E 11 MX	
<b>MPH 3/4 [inch]</b>									
MPH 3/4"/ERMX 11	4619.91108	16	19.05	25	35.5	70	0.5	E 11 MX	
<b>MPH 20 [mm]</b>									
MPH 20/ERMX 11	4620.91107	16	20	25	35.5	42	0.5	E 11 MX	
<b>MPH 22 [mm]</b>									
MPH 22/ERMX 11	4622.91107	16	22	25	35.5	42	0.5	E 11 MX	
<b>MPH 25 [mm]</b>									
MPH 25/ERMX 11	4625.91107	16	25	25	35.5	42	0.5	E 11 MX	
<b>MPH 1 [inch]</b>									
MPH 1"/ERMX 11	4625.91108	16	25.4	25	35.5	42	0.5	E 11 MX	

Included in delivery: Floating holder comes with Hi-Q®/ERMX clamping nut and wrench

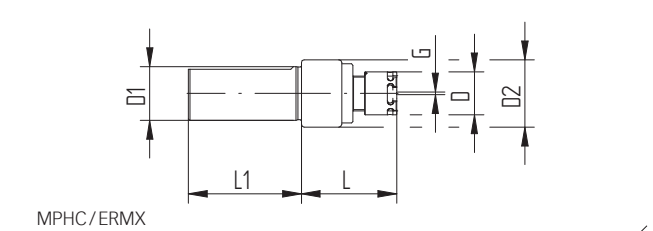


## MPHC mini floating chucks with intrRlox®

(slip-off proof mini clamping nut)

Type	Part no.	Dimensions [mm]						Accessory	
		D	D1 h6	D2	L	L1	G	Wrench	
<b>MPHC 8 [mm]</b>									
MPHC 8/ERMX 11	4608.91105	16	8	25	35.5	42	0.5	E 11 MX	
<b>MPHC 10 [mm]</b>									
MPHC 10/ERMX 11	4610.91105	16	10	25	35.5	42	0.5	E 11 MX	
MPHC 10/ERMX 16	4610.91605	22	10	31	47	42	0.5	E 16 MX	
<b>MPHC 16 [mm]</b>									
MPHC 16/ERMX 16	4616.91605	22	16	31	47	42	0.5	E 16 MX	
<b>MPHC 3/4 [inch]</b>									
MPHC 3/4"/ERMX 11	4619.91106	16	19.05	25	35.5	42	0.5	E 11 MX	
MPHC 3/4"/ERMX 16	4619.91606	22	19.05	31	47	42	0.5	E 16 MX	
<b>MPHC 20 [mm]</b>									
MPHC 20/ERMX 11	4620.91105	16	20	25	35.5	42	0.5	E 11 MX	
MPHC 20/ERMX 16	4620.91605	22	20	31	47	42	0.5	E 16 MX	
<b>MPHC 22 [mm]</b>									
MPHC 22/ERMX 16	4622.91605	22	22	31	47	42	0.5	E 16 MX	
<b>MPHC 25 [mm]</b>									
MPHC 25/ERMX 16	4625.91605	22	25	31	47	42	0.5	E 16 MX	
<b>MPHC 1 [inch]</b>									
MPH 1"/ERMX 16	4625.91606	22	25.4	31	47	42	0.5	E 16 MX	

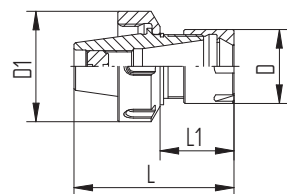
Included in delivery: Floating holder comes with Hi-Q®/ERMX clamping nut and wrench



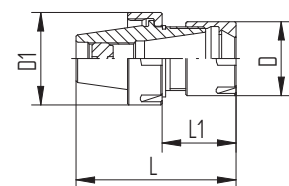
# SwissQuick Collet Reducers

Type	Part no.	Dimensions [mm]				Accessory
		D	D1	L	L1	Wrench
<b>ER 11</b>						
ER 11/ERM 8	7162.11080	12	19	33	16.5	E 11 P/E 8 M
<b>ER 16</b>						
ER 16/ERM 11	7162.16110	16	28	42.5	18.5	E 16 P/E 11 M
<b>ER 20</b>						
ER 20/ERM 11*	7162.20110	16	34	42	16.5	E 20 P/E 11 M
ER 20/ERM 16	7162.20160	22	34	55.5	28	E 20 P/E 16 M
<b>ER 25</b>						
ER 25/ERM 11*	7162.25110	16	42	54.4	16.5	E 25/E 11 M
ER 25/ERM 16	7162.25160	22	42	60.5	28	E 25/E 16 M
ER 25/ERM 20	7162.25200	28	42	60.5	28	E 25/E 20 M
<b>ERM 11</b>						
ERM 11/ERM 8	7161.11080	12	16	33	16.5	E 11 M/E 8 M
<b>ERM 16</b>						
ERM 16/ERM 11	7161.16110	16	23	42.5	18.5	E 16 M/E 11 M
<b>ERM 20</b>						
ERM 20/ERM 16	7161.20160	22	28	55.5	28	E 20 M/E 16 M
<b>ERM 25</b>						
ERM 25/ERM 11*	7161.25110	16	35	54.5	22	E 25 M/E 11 M
ERM 25/ERM 16	7161.25160	22	35	60.5	28	E 25 M/E 16 M
ERM 25/ERM 20	7161.25200	28	35	60.5	28	E 25 M/E 20 M
<b>ER 32*</b>						
ER 32/ER 16	7160.32160	28	50	56	29.5	E 32/E 16 P
ER 32/ER 20	7160.32200	34	50	69.5	32.5	E 32/E 20 P

\*USA only



ER/ERM



ERM/ERM

# Collet reductions with intRlox®

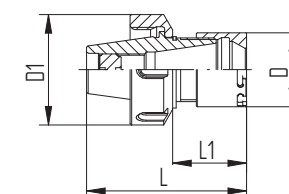
ER/ERMX

ERMX/ERMX

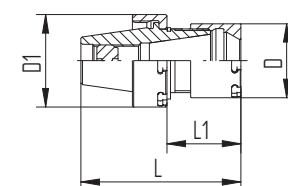
(slip-off proof mini clamping nut)

Type	Part no.	Dimensions [mm]				Accessory
		D	D1	L	L1	Wrench
<b>ER 11</b>						
ER 11/ERMX 8	7165.11080	12	19	33	16.5	E 11 P/E 8 MX
<b>ER 16</b>						
ER 16/ERMX 11	7165.16110	16	28	42.5	18.5	E 16 P/E 11 MX
<b>ER 20</b>						
ER 20/ERMX 11*	7165.20110	16	34	42	16.5	E 20 P/E 11 MX
ER 20/ERMX 16	7165.20160	22	34	55.5	28	E 20 P/E 16 MX
<b>ER 25</b>						
ER 25/ERMX 11*	7165.25110	16	42	54.4	16.5	E 25/E 11 MX
ER 25/ERMX 16	7165.25160	22	42	60.5	28	E 25/E 16 MX
ER 25/ERMX 20	7165.25200	28	42	60.5	28	E 25/E 20 MX
<b>ERMX 11</b>						
ERMX 11/ERMX 8	7164.11080	12	16	33	16.5	E 11 MX/E 8 MX
<b>ERMX 16</b>						
ERMX 16/ERMX 11	7164.16110	16	23	42.5	18.5	E 16 MX/E 11 MX
<b>ERMX 20</b>						
ERMX 20/ERMX 16	7164.20160	22	28	55.5	28	E 20 MX/E 16 MX
<b>ERMX 25</b>						
ERMX 25/ERMX 11*	7164.25110	16	35	54.5	22	E 25 MX/E 11 MX
ERMX 25/ERMX 16	7164.25160	22	35	60.5	28	E 25 MX/E 16 MX

\*USA only



ER/ERMX



ERMX/ERMX

## Microbore collets ER-MB

Type	Part no.	Clamping capacity h7	
		[mm]	[decimal inch]
<b>ER 8-MB</b>			
Ø 0.2 mm	1308.00200	0.2	0.0079
Ø 0.3 mm	1308.00300	0.3	0.0118
Ø 0.4 mm	1308.00400	0.4	0.0157
Ø 0.5 mm	1308.00500	0.5	0.0197
Ø 0.6 mm	1308.00600	0.6	0.0236
Ø 0.7 mm	1308.00700	0.7	0.0276
Ø 0.8 mm	1308.00800	0.8	0.0315
Ø 0.9 mm	1308.00900	0.9	0.0354



## INOX Microbore collets ER-MBX (Rust-prohibitive)

ER 11-MBX (INOX Stainless Steel)		ER 16-MBX (INOX Stainless Steel)	
Ø 0.20 mm	1311.00201	Ø 0.20 mm	1316.00201
Ø 0.25 mm	1311.00251	Ø 0.25 mm	1316.00251
Ø 0.30 mm	1311.00301	Ø 0.30 mm	1316.00301
Ø 0.35 mm	1311.00351	Ø 0.35 mm	1316.00351
Ø 0.40 mm	1311.00401	Ø 0.40 mm	1316.00401
Ø 0.45 mm	1311.00451	Ø 0.45 mm	1316.00451
Ø 0.50 mm	1311.00501	Ø 0.50 mm	1316.00501
Ø 0.55 mm	1311.00551	Ø 0.55 mm	1316.00551
Ø 0.60 mm	1311.00601	Ø 0.60 mm	1316.00601
Ø 0.65 mm	1311.00651	Ø 0.65 mm	1316.00651
Ø 0.70 mm	1311.00701	Ø 0.70 mm	1316.00701
Ø 0.75 mm	1311.00751	Ø 0.75 mm	1316.00751
Ø 0.80 mm	1311.00801	Ø 0.80 mm	1316.00801
Ø 0.85 mm	1311.00851	Ø 0.85 mm	1316.00851
Ø 0.90 mm	1311.00901	Ø 0.90 mm	1316.00901
Ø 0.95 mm	1311.00951	Ø 0.95 mm	1316.00951
Ø 1.00 mm	1311.01001	Ø 1.00 mm	1316.01001

## Expert advice

INOX ER-MBX collets are made out of stainless steel and provide the ultimate protection against corrosion.

All ER-MBX collets have a 0.05 mm clamping range.

## ER standard collets and ultraprecision collets ER-UP

ER std.	ER-UP
DIN 6499-B	DIN 6499-B
ISO 15488	ISO 15488

Type	Part no.		Clamping range		Ø [inch]	Included in set
	ER standard	ER-UP	[mm]	[decimal inch]		
<b>ER 8 [mm]</b>						
SET ER 8	1108.00000	1108.00001	0.5–5.0	0.0197–0.1969	–	–
Ø 1.0 mm	1108.01000	1108.01001	1.0–0.5	0.0394–0.0197	1/32"	•
Ø 1.25 mm	1108.01250	1108.01251	1.25–0.75	0.0492–0.0295	–	–
Ø 1.5 mm	1108.01500	1108.01501	1.5–1.0	0.0591–0.0394	–	•
Ø 1.75 mm	1108.01750	1108.01751	1.75–1.25	0.0689–0.0492	–	–
Ø 2.0 mm	1108.02000	1108.02001	2.0–1.5	0.0787–0.0591	1/16"*	•
Ø 2.25 mm	1108.02250	1108.02251	2.25–1.75	0.0886–0.0689	–	–
Ø 2.5 mm	1108.02500	1108.02501	2.5–2.0	0.0984–0.0787	3/32"	•
Ø 3.0 mm	1108.03000	1108.03001	3.0–2.5	0.1181–0.0984	–	•
Ø 3.5 mm	1108.03500	1108.03501	3.5–3.0	0.1378–0.1181	1/8"*	•
Ø 4.0 mm	1108.04000	1108.04001	4.0–3.5	0.1575–0.1378	5/32"	•
Ø 4.5 mm	1108.04500	1108.04501	4.5–4.0	0.1772–0.1575	–	•
Ø 5.0 mm	1108.05000	1108.05001	5.0–4.5	0.1969–0.1772	3/16"*	•
<b>ER 8 [inch]</b>						
INCH SET ER 8	1108.00002	1108.00003	1.09–4.76	0.0429–0.1875	–	–
Ø 1/16"	1108.01592	1108.01593	1.59–1.09	0.0625–0.0429	–	•
Ø 1/8"	1108.03182	1108.03183	3.18–2.68	0.125–0.1055	–	•
Ø 3/16"	1108.04762	1108.04763	4.76–4.25	0.1875–0.1675	–	•
<b>ER 11 [mm]</b>						
SET ER 11	1111.00000	1111.00001	0.5–7.0	0.0197–0.2756	–	–
Ø 1.0 mm	1111.01000	1111.01001	1.0–0.5	0.0394–0.0197	1/32"	•
Ø 1.25 mm	1111.01250	1111.01251	1.25–0.75	0.0492–0.0295	–	–
Ø 1.5 mm	1111.01500	1111.01501	1.5–1.0	0.0591–0.0394	–	•
Ø 1.75 mm	1111.01750	1111.01751	1.75–1.25	0.0689–0.0492	–	–
Ø 2.0 mm	1111.02000	1111.02001	2.0–1.5	0.0787–0.0591	1/16"*	•
Ø 2.25 mm	1111.02250	1111.02251	2.25–1.75	0.0886–0.0689	–	–
Ø 2.5 mm	1111.02500	1111.02501	2.5–2.0	0.0984–0.0787	3/32"*	•
Ø 3.0 mm	1111.03000	1111.03001	3.0–2.5	0.1181–0.0984	–	•
Ø 3.5 mm	1111.03500	1111.03501	3.5–3.0	0.1378–0.1181	1/8"*	•
Ø 4.0 mm	1111.04000	1111.04001	4.0–3.5	0.1575–0.1378	5/32"*	•
Ø 4.5 mm	1111.04500	1111.04501	4.5–4.0	0.1772–0.1575	–	•
Ø 5.0 mm	1111.05000	1111.05001	5.0–4.5	0.1969–0.1772	3/16"*	•
Ø 5.5 mm	1111.05500	1111.05501	5.5–5.0	0.2165–0.1969	–	•
Ø 6.0 mm	1111.06000	1111.06001	6.0–5.5	0.2362–0.2165	7/32"*	•
Ø 6.5 mm	1111.06500	1111.06501	6.5–6.0	0.2559–0.2362	1/4"*	•
Ø 7.0 mm	1111.07000	1111.07001	7.0–6.5	0.2756–0.2559	–	•

Included in the ER sets are all marked collets within that size and the matching collet tray ZWT

\*Approx. inch sizing

# ER standard collets and ultraprecision collets ER-UP

<b>ER std.</b>	<b>ER-UP</b>
DIN 6499-B	DIN 6499-B
ISO 15488	ISO 15488

Type	Part no.		Clamping range			Included in set
	ER standard	ER-UP	[mm]	[decimal inch]	Ø [inch]	
<b>ER 11 [inch]</b>						
INCH SET ER 11	1111.00002	1111.00003	1.09–6.35	0.0429–0.25	–	–
Ø 1/16"	1111.01592	1111.01593	1.59–1.09	0.0625–0.0429	1/16"	•
Ø 3/32"	1111.02382	1111.02383	2.38–1.87	0.0938–0.0738	3/32"	•
Ø 1/8"	1111.03182	1111.03183	3.18–2.67	0.125–0.105	1/8"	•
Ø 5/32"	1111.03972	1111.03973	3.97–3.46	0.1563–0.1363	5/32"	•
Ø 3/16"	1111.04762	1111.04763	4.76–4.25	0.1875–0.1675	3/16"	•
Ø 7/32"	1111.05562	1111.05563	5.56–5.04	0.2188–0.1988	7/32"	•
Ø 1/4"	1111.06352	1111.06353	6.35–5.84	0.25–0.23	1/4"	•

Type	Part no.		Clamping range			Included in set
	ER standard	ER-UP	[mm]	[decimal inch]	Ø [inch]	
<b>ER 16 [mm]</b>						
SET ER 16	1116.00000	1116.00001	0.5–10.0	0.0197–0.3937	–	–
Ø 1.0 mm	1116.01000	1116.01001	1.0–0.5	0.0394–0.0197	1/32"	•
Ø 1.5 mm	1116.01500	1116.01501	1.5–1.0	0.0591–0.0394	–	–
Ø 2.0 mm	1116.02000	1116.02001	2.0–1.0	0.0787–0.0394	1/16"*	•
Ø 2.5 mm	1116.02500	1116.02501	2.5–1.5	0.0984–0.0591	3/32"*	–
Ø 3.0 mm	1116.03000	1116.03001	3.0–2.0	0.1181–0.0787	–	•
Ø 3.5 mm	1116.03500	1116.03501	3.5–2.5	0.1378–0.0984	1/8"*	–
Ø 4.0 mm	1116.04000	1116.04001	4.0–3.0	0.1575–0.1181	5/32"*	•
Ø 4.5 mm	1116.04500	1116.04501	4.5–3.5	0.1772–0.1378	–	–
Ø 5.0 mm	1116.05000	1116.05001	5.0–4.0	0.1969–0.1575	3/16"*	•
Ø 5.5 mm	1116.05500	1116.05501	5.5–4.5	0.2165–0.1772	–	–
Ø 6.0 mm	1116.06000	1116.06001	6.0–5.0	0.2362–0.1969	7/32"*	•
Ø 6.5 mm	1116.06500	1116.06501	6.5–5.5	0.2559–0.2165	1/4"*	–
Ø 7.0 mm	1116.07000	1116.07001	7.0–6.0	0.2756–0.2362	–	•
Ø 7.5 mm	1116.07500	1116.07501	7.5–6.5	0.2953–0.2559	9/32"*	–
Ø 8.0 mm	1116.08000	1116.08001	8.0–7.0	0.315–0.2756	5/16"*	•
Ø 8.5 mm	1116.08500	1116.08501	8.5–7.5	0.3346–0.2953	–	–
Ø 9.0 mm	1116.09000	1116.09001	9.0–8.0	0.3543–0.315	11/32"*	•
Ø 9.5 mm	1116.09500	1116.09501	9.5–8.5	0.374–0.3346	–	–
Ø 10.0 mm	1116.10000	1116.10001	10.0–9.0	0.3937–0.3543	3/8"*	•

Type	Part no.		Clamping range			Included in set
	ER standard	ER-UP	[mm]	[decimal inch]	Ø [inch]	
<b>ER 16 [inch]</b>						
INCH SET ER 16	1116.00002	1116.00003	1.09–10.32	0.0429–0.4063	–	–
Ø 1/16"	1116.01592	1116.01593	1.59–1.09	0.0625–0.0429	1/16"	•
Ø 3/32"	1116.02382	1116.02383	2.38–1.87	0.0938–0.0738	3/32"	•
Ø 1/8"	1116.03182	1116.03183	3.18–2.16	0.125–0.085	1/8"	•
Ø 5/32"	1116.03972	1116.03973	3.97–2.95	0.1563–0.1163	5/32"	•
Ø 3/16"	1116.04762	1116.04763	4.76–3.75	0.1875–0.1475	3/16"	•

Included in the ER sets are all marked collets within that size and the matching collet tray ZWT

\*Approx. inch sizing

# ER standard collets and ultraprecision collets ER-UP

<b>ER std.</b>	<b>ER-UP</b>
DIN 6499-B	DIN 6499-B
ISO 15488	ISO 15488

Type	Part no.		Clamping range			Included in set
	ER standard	ER-UP	[mm]	[decimal inch]	Ø [inch]	
Ø 7/32"	1116.05562	1116.05563	5.56–4.54	0.2188–0.1788	7/32"	•
Ø 1/4"	1116.06352	1116.06353	6.35–5.33	0.25–0.21	1/4"	•
Ø 9/32"	1116.07142	1116.07143	7.15–6.13	0.2813–0.2413	9/32"	•
Ø 5/16"	1116.07942	1116.07943	7.94–6.92	0.3125–0.2725	5/16"	•
Ø 11/32"	1116.08732	1116.08733	8.73–7.72	0.3438–0.3038	11/32"	•
Ø 3/8"	1116.09532	1116.09533	9.53–8.51	0.375–0.335	3/8"	•
Ø 13/32"	1116.10322	1116.10323	10.32–9.3	0.4063–0.3663	13/32"	•

Type	Part no.		Clamping range			Included in set
	ER standard	ER-UP	[mm]	[decimal inch]	Ø [inch]	
<b>ER 20 [mm]</b>						
SET ER 20	1120.00000	1120.00001	1.0–13.0	0.0394–0.5118	–	–
Ø 1.0 mm	1120.01000	1120.01001	1.0–0.5	0.0394–0.0197	1/32"	–
Ø 1.5 mm	1120.01500	1120.01501	1.5–1.0	0.0591–0.0394	–	–
Ø 2.0 mm	1120.02000	1120.02001	2.0–1.0	0.0787–0.0394	1/16"	•
Ø 2.5 mm	1120.02500	1120.02501	2.5–1.5	0.0984–0.0591	3/32"	–
Ø 3.0 mm	1120.03000	1120.03001	3.0–2.0	0.1181–0.0787	–	•
Ø 3.5 mm	1120.03500	1120.03501	3.5–2.5	0.1378–0.0984	1/8"	–
Ø 4.0 mm	1120.04000	1120.04001	4.0–3.0	0.1575–0.1181	5/32"	•
Ø 4.5 mm	1120.04500	1120.04501	4.5–3.5	0.1772–0.1378	–	–
Ø 5.0 mm	1120.05000	1120.05001	5.0–4.0	0.1969–0.1575	3/16"	•
Ø 5.5 mm	1120.05500	1120.05501	5.5–4.5	0.2165–0.1772	–	–
Ø 6.0 mm	1120.06000	1120.06001	6.0–5.0	0.2362–0.1969	7/32"	•
Ø 6.5 mm	1120.06500	1120.06501	6.5–5.5	0.2559–0.2165	1/4"	–
Ø 7.0 mm	1120.07000	1120.07001	7.0–6.0	0.2756–0.2362	–	•
Ø 7.5 mm	1120.07500	1120.07501	7.5–6.5	0.2953–0.2559	9/32"	–
Ø 8.0 mm	1120.08000	1120.08001	8.0–7.0	0.315–0.2756	5/16"	•
Ø 8.5 mm	1120.08500	1120.08501	8.5–7.5	0.3346–0.2953	–	–
Ø 9.0 mm	1120.09000	1120.09001	9.0–8.0	0.3543–0.315	11/32"	•
Ø 9.5 mm	1120.09500	1120.09501	9.5–8.5	0.374–0.3346	–	–
Ø 10.0 mm	1120.10000	1120.10001	10.0–9.0	0.3937–0.3543	3/8"	•
Ø 10.5 mm	1120.10500	1120.10501	10.5–9.5	0.4134–0.374	13/32"	–
Ø 11.0 mm	1120.11000	1120.11001	11.0–10.0	0.4331–0.3937	–	•
Ø 11.5 mm	1120.11500	1120.11501	11.5–10.5	0.4528–0.4134	7/16"	–
Ø 12.0 mm	1120.12000	1120.12001	12.0–11.0	0.4724–0.433	15/32"	•
Ø 12.5 mm	1120.12500	1120.12501	12.5–11.5	0.4921–0.4528	–	–
Ø 13.0 mm	1120.13000	1120.13001	13.0–12.0	0.5118–0.4724	1/2"	•

Included in the ER sets are all marked collets within that size and the matching collet tray ZWT

\*Approx. inch sizing

# ER standard collets and ultraprecision collets ER-UP

<b>ER std.</b>	<b>ER-UP</b>
DIN 6499-B	DIN 6499-B
ISO 15488	ISO 15488

Type	Part no.		Clamping range			Included in set
	ER standard	ER-UP	[mm]	[decimal inch]	Ø [inch]	
<b>ER 20 [inch]</b>						
INCH SET ER 20	1120.00002	1120.00003	2.16–12.7	0.085–0.5	–	–
Ø 1/8"	1120.03182	1120.03183	3.18–2.18	0.125–0.085	1/8"	•
Ø 3/16"	1120.04762	1120.04763	4.76–3.76	0.1875–0.1475	3/16"	•
Ø 1/4"	1120.06352	1120.06353	6.35–5.35	0.25–0.21	1/4"	•
Ø 5/16"	1120.07942	1120.07943	7.94–6.94	0.3125–0.2725	5/16"	•
Ø 3/8"	1120.09532	1120.09533	9.53–8.53	0.375–0.335	3/8"	•
Ø 7/16"	1120.11112	1120.11113	11.11–10.11	0.4375–0.3975	7/16"	•
Ø 1/2"	1120.12702	1120.12703	12.7–11.7	0.5–0.46	1/2"	•
<b>ER 25 [mm]</b>						
SET ER 25	1125.00000	1125.00001	2.0–16.0	0.0787–0.6299	–	–
Ø 1.0 mm	1125.01000	1125.01001	1.0–0.5	0.0394–0.0197	1/32"	–
Ø 1.5 mm	1125.01500	1125.01501	1.5–1.0	0.0591–0.0394	–	–
Ø 2.0 mm	1125.02000	1125.02001	2.0–1.0	0.0787–0.0394	1/16"	•
Ø 2.5 mm	1125.02500	1125.02501	2.5–1.5	0.0984–0.0591	3/32"	–
Ø 3.0 mm	1125.03000	1125.03001	3.0–2.0	0.1181–0.0787	–	•
Ø 3.5 mm	1125.03500	1125.03501	3.5–2.5	0.1378–0.0984	1/8"*	–
Ø 4.0 mm	1125.04000	1125.04001	4.0–3.0	0.1575–0.1181	5/32"	•
Ø 4.5 mm	1125.04500	1125.04501	4.5–3.5	0.1772–0.1378	–	–
Ø 5.0 mm	1125.05000	1125.05001	5.0–4.0	0.1969–0.1575	3/16"*	•
Ø 5.5 mm	1125.05500	1125.05501	5.5–4.5	0.2165–0.1772	–	–
Ø 6.0 mm	1125.06000	1125.06001	6.0–5.0	0.2362–0.1969	7/32"	•
Ø 6.5 mm	1125.06500	1125.06501	6.5–5.5	0.2559–0.2165	1/4"*	–
Ø 7.0 mm	1125.07000	1125.07001	7.0–6.0	0.2756–0.2362	–	•
Ø 7.5 mm	1125.07500	1125.07501	7.5–6.5	0.2953–0.2559	9/32"	–
Ø 8.0 mm	1125.08000	1125.08001	8.0–7.0	0.315–0.2756	5/16"*	•
Ø 8.5 mm	1125.08500	1125.08501	8.5–7.5	0.3346–0.2953	–	–
Ø 9.0 mm	1125.09000	1125.09001	9.0–8.0	0.3543–0.315	11/32"	•
Ø 9.5 mm	1125.09500	1125.09501	9.5–8.5	0.374–0.3346	–	–
Ø 10.0 mm	1125.10000	1125.10001	10.0–9.0	0.3937–0.3543	3/8"*	•
Ø 10.5 mm	1125.10500	1125.10501	10.5–9.5	0.4134–0.374	13/32"	–
Ø 11.0 mm	1125.11000	1125.11001	11.0–10.0	0.4331–0.3937	–	•
Ø 11.5 mm	1125.11500	1125.11501	11.5–10.5	0.4528–0.4134	7/16"*	–
Ø 12.0 mm	1125.12000	1125.12001	12.0–11.0	0.4724–0.4331	15/32"	•
Ø 12.5 mm	1125.12500	1125.12501	12.5–11.5	0.4921–0.4528	–	–
Ø 13.0 mm	1125.13000	1125.13001	13.0–12.0	0.5118–0.4724	1/2"*	•
Ø 13.5 mm	1125.13500	1125.13501	13.5–12.5	0.5315–0.4921	17/32"	–
Ø 14.0 mm	1125.14000	1125.14001	14.0–13.0	0.5512–0.5118	–	•

Included in the ER sets are all marked collets within that size and the matching collet tray ZWT

\*Approx. inch sizing

# ER standard collets and ultraprecision collets ER-UP

<b>ER std.</b>	<b>ER-UP</b>
DIN 6499-B	DIN 6499-B
ISO 15488	ISO 15488

Type	Part no.		Clamping range			Included in set
	ER standard	ER-UP	[mm]	[decimal inch]	Ø [inch]	
Ø 14.5 mm	1125.14500	1125.14501	14.5–13.5	0.5709–0.5315	9/16"*	–
Ø 15.0 mm	1125.15000	1125.15001	15.0–14.0	0.5906–0.5512	–	•
Ø 15.5 mm	1125.15500	1125.15501	15.5–14.5	0.6102–0.5709	19/32"	–
Ø 16.0 mm	1125.16000	1125.16001	16.0–15.0	0.6299–0.5905	5/8"*	•
Ø 17.0 mm	1125.17000	1125.17001	17.0–16.0	0.6693–0.6299	21/32"	–
<b>ER 25 [inch]</b>						
INCH SET ER 25	1125.00002	1125.00003	2.16–15.88	0.085–0.625	–	–
Ø 1/8"	1125.03182	1125.03183	3.18–2.16	0.125–0.085	1/8"	•
Ø 3/16"	1125.04762	1125.04763	4.76–3.75	0.1875–0.1475	3/16"	•
Ø 1/4"	1125.06352	1125.06353	6.35–5.33	0.25–0.21	1/4"	•
Ø 5/16"	1125.07942	1125.07943	7.94–6.92	0.3125–0.2725	5/16"	•
Ø 3/8"	1125.09532	1125.09533	9.53–8.51	0.375–0.335	3/8"	•
Ø 7/16"	1125.11112	1125.11113	11.11–10.11	0.4375–0.3975	7/16"	•
Ø 1/2"	1125.12702	1125.12703	12.70–11.68	0.5–0.46	1/2"	•
Ø 9/16"	1125.14292	1125.14293	14.29–13.27	0.5625–0.5225	9/16"	•
Ø 5/8"	1125.15882	1125.15883	15.88–14.78	0.625–0.582	5/8"	•
<b>ER 32 [mm]</b>						
SET ER 32	1132.00000	1132.00001	2.0–20.0	0.0787–0.7874	–	–
Ø 2.0 mm	1132.02000	1132.02001	2.0–1.0	0.0787–0.0394	1/16"	–
Ø 2.5 mm	1132.02500	1132.02501	2.5–1.5	0.0984–0.0591	3/32"	–
Ø 3.0 mm	1132.03000	1132.03001	3.0–2.0	0.1181–0.0787	–	•
Ø 3.5 mm	1132.03500	1132.03501	3.5–2.5	0.1378–0.0984	1/8"*	–
Ø 4.0 mm	1132.04000	1132.04001	4.0–3.0	0.1575–0.1181	5/32"	•
Ø 4.5 mm	1132.04500	1132.04501	4.5–3.5	0.1772–0.1378	–	–
Ø 5.0 mm	1132.05000	1132.05001	5.0–4.0	0.1969–0.1575	3/16"*	•
Ø 5.5 mm	1132.05500	1132.05501	5.5–4.5	0.2165–0.1772	–	–
Ø 6.0 mm	1132.06000	1132.06001	6.0–5.0	0.2362–0.1969	7/32"	•
Ø 6.5 mm	1132.06500	1132.06501	6.5–5.5	0.2559–0.2165	1/4"*	–
Ø 7.0 mm	1132.07000	1132.07001	7.0–6.0	0.2756–0.2362	–	•
Ø 7.5 mm	1132.07500	1132.07501	7.5–6.5	0.2953–0.2559	9/32"	–
Ø 8.0 mm	1132.08000	1132.08001	8.0–7.0	0.315–0.2756	5/16"*	•
Ø 8.5 mm	1132.08500	1132.08501	8.5–7.5	0.3346–0.2953	–	–
Ø 9.0 mm	1132.09000	1132.09001	9.0–8.0	0.3543–0.315	11/32"	•
Ø 9.5 mm	1132.09500	1132.09501	9.5–8.5	0.374–0.3346	–	–
Ø 10.0 mm	1132.10000	1132.10001	10.0–9.0	0.3937–0.3543	3/8"*	•
Ø 10.5 mm	1132.10500	1132.10501	10.5–9.5	0.4134–0.374	13/32"	–
Ø 11.0 mm	1132.11000	1132.11001	11.0–10.0	0.4331–0.3937	–	•

Included in the ER sets are all marked collets within that size and the matching collet tray ZWT

\*Approx. inch sizing

# ER standard collets and ultraprecision collets ER-UP

<b>ER std.</b>	<b>ER-UP</b>
DIN 6499-B	DIN 6499-B
ISO 15488	ISO 15488

Type	Part no.		Clamping range			Included in set
	ER standard	ER-UP	[mm]	[decimal inch]	Ø [inch]	
<b>ER 32 [mm] continued</b>						
Ø 11.5 mm	1132.11500	1132.11501	11.5–10.5	0.4528–0.4134	7/16"*	–
Ø 12.0 mm	1132.12000	1132.12001	12.0–11.0	0.4724–0.4331	15/32"	•
Ø 12.5 mm	1132.12500	1132.12501	12.5–11.5	0.4921–0.4528	–	–
Ø 13.0 mm	1132.13000	1132.13001	13.0–12.0	0.5118–0.4724	1/2"*	•
Ø 13.5 mm	1132.13500	1132.13501	13.5–12.5	0.5315–0.4921	17/32"	–
Ø 14.0 mm	1132.14000	1132.14001	14.0–13.0	0.5512–0.5118	–	•
Ø 14.5 mm	1132.14500	1132.14501	14.5–13.5	0.5709–0.5315	9/16"*	–
Ø 15.0 mm	1132.15000	1132.15001	15.0–14.0	0.5906–0.5512	–	•
Ø 15.5 mm	1132.15500	1132.15501	15.5–14.5	0.6102–0.5709	19/32"	–
Ø 16.0 mm	1132.16000	1132.16001	16.0–15.0	0.63299–0.5906	5/8"*	•
Ø 16.5 mm	1132.16500	1132.16501	16.5–15.5	0.6496–0.6102	–	–
Ø 17.0 mm	1132.17000	1132.17001	17.0–16.0	0.6693–0.6299	21/32"	•
Ø 17.5 mm	1132.17500	1132.17501	17.5–16.5	0.689–0.6496	11/16"*	–
Ø 18.0 mm	1132.18000	1132.18001	18.0–17.0	0.7087–0.6693	–	•
Ø 18.5 mm	1132.18500	1132.18501	18.5–17.5	0.7283–0.689	23/32"	–
Ø 19.0 mm	1132.19000	1132.19001	19.0–18.0	0.748–0.7078	–	•
Ø 19.5 mm	1132.19500	1132.19501	19.5–18.5	0.7677–0.7284	3/4"*	–
Ø 20.0 mm	1132.20000	1132.20001	20.0–19.0	0.7874–0.748	25/32"	•
Ø 21.0 mm	1132.21000	1132.21001	21.0–20.0	0.8268–0.7874	13/16"*	–
Ø 22.0 mm	1132.22000	1132.22001	22.0–21.0	0.8661–0.8268	–	–

<b>ER 32 [inch]</b>						
Type	ER standard	ER-UP	[mm]	[decimal inch]	Ø [inch]	Included in set
INCH SET ER 32	1132.00002	1132.00003	2.16–20.64	0.085–0.8125	–	–
Ø 1/8"	1132.03182	1132.03183	3.18–2.16	0.125–0.085	1/8"	•
Ø 3/16"	1132.04762	1132.04763	4.76–3.75	0.1875–0.1475	3/16"	•
Ø 1/4"	1132.06352	1132.06353	6.35–5.33	0.25–0.21	1/4"	•
Ø 5/16"	1132.07942	1132.07943	7.94–6.92	0.3125–0.2725	5/16"	•
Ø 3/8"	1132.09532	1132.09533	9.53–8.51	0.375–0.335	3/8"	•
Ø 7/16"	1132.11112	1132.11113	11.11–10.1	0.4375–0.3975	7/16"	•
Ø 1/2"	1132.12702	1132.12703	12.7–11.68	0.5–0.46	1/2"	•
Ø 9/16"	1132.14292	1132.14293	14.29–13.27	0.5625–0.5225	9/16"	•
Ø 5/8"	1132.15882	1132.15883	15.88–14.86	0.625–0.585	5/8"	•
Ø 11/16"	1132.17462	1132.17463	17.46–16.45	0.6875–0.6475	11/16"	•
Ø 3/4"	1132.19052	1132.19053	19.05–18.03	0.75–0.71	3/4"	•
Ø 13/16"	1132.20642	1132.20643	20.64–19.62	0.8125–0.7725	13/16"	•

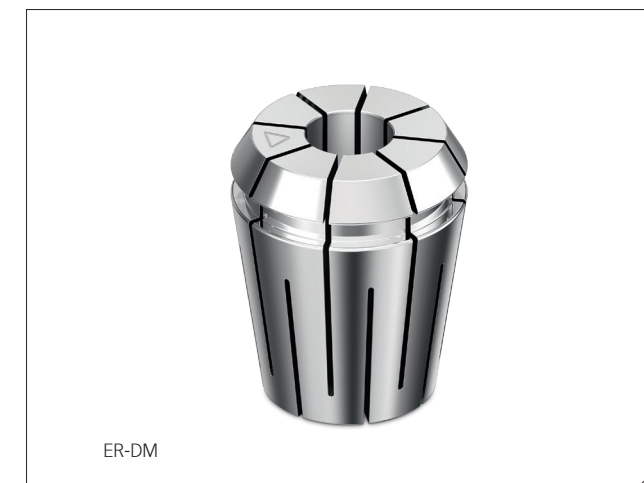
Included in the ER sets are all marked collets within that size and the matching collet tray ZWT

\*Approx. inch sizing

# ER-DM

## Metallic sealed collets ER-DM

Type	Part no.	Clamping range			Included in set
		[mm]	[decimal inch]	Ø [inch]	
<b>ER 11-DM [mm]</b>					
Ø 3.0 mm	1211.03000	3.0–2.75	0.1181–0.1083	–	–
Ø 4.0 mm	1211.04000	4.0–3.75	0.1575–0.1476	–	–
Ø 5.0 mm	1211.05000	5.0–4.75	0.1969–0.187	–	–
Ø 6.0 mm	1211.06000	6.0–5.75	0.2362–0.2264	–	–
Ø 7.0 mm	1211.07000	7.0–6.75	0.2756–0.2657	–	–
<b>ER 11-DM [inch]</b>					
Ø 1/8"	1211.03182	3.18–2.93	0.125–0.1154	1/8"	–
Ø 3/16"	1211.04762	4.76–4.51	0.1875–0.1776	3/16"	–
Ø 7/32"	1211.05562	5.56–5.31	0.2188–0.2091	7/32"	–
Ø 1/4"	1211.06352	6.35–6.1	0.25–0.2402	1/4"	–
<b>ER 16-DM [mm]</b>					
SET ER 16-DM	1216.00000	3.0–10.0	0.1181–0.3937	–	–
Ø 3.0 mm	1216.03000	3.0 h9	0.1181 h9	–	•
Ø 4.0 mm	1216.04000	4.0 h9	0.1575 h9	–	•
Ø 5.0 mm	1216.05000	5.0–4.5	0.1969–0.1772	–	•
Ø 6.0 mm	1216.06000	6.0–5.5	0.2362–0.2165	–	•
Ø 7.0 mm	1216.07000	7.0–6.5	0.2756–0.2559	–	•
Ø 8.0 mm	1216.08000	8.0–7.5	0.315–0.2953	–	•
Ø 9.0 mm	1216.09000	9.0–8.5	0.3543–0.3346	–	•
Ø 10.0 mm	1216.10000	10.0–9.5	0.3937–0.374	–	•



### Expert advice

Please note that the ER-DM collets are not suitable for use with reCool®.

## Metallic sealed collets ER-DM

Type	Part no.	Clamping range		Ø [inch]	Included in set
		[mm]	[decimal inch]		
<b>ER 16-DM [inch]</b>					
INCH SET ER 16-DM	1216.00002	3.18–10.32	0.125–0.4063	–	–
Ø 1/8"	1216.03182	3.18 h9	0.125 h9	1/8"	•
Ø 5/32"	1216.03972	3.97 h9	0.1563 h9	5/32"	–
Ø 3/16"	1216.04762	4.76 h9	0.1875 h9	3/16"	•
Ø 7/32"	1216.05562	5.56–5.06	0.2188–0.1991	7/32"	–
Ø 1/4"	1216.06352	6.35–5.85	0.25–0.2303	1/4"	•
Ø 9/32"	1216.07142	7.14–6.64	0.2813–0.2616	9/32"	–
Ø 5/16"	1216.07942	7.94–7.44	0.3125–0.2928	5/16"	•
Ø 11/32"	1216.08732	8.73–8.23	0.3438–0.3241	11/32"	–
Ø 3/8"	1216.09532	9.53–9.02	0.375–0.3553	3/8"	•
Ø 13/32"	1216.10322	10.32–9.82	0.4063–0.3866	13/32"	–
<b>ER 20-DM [mm]</b>					
SET ER 20-DM	1220.00000	3.0–13.0	0.1181–0.5118	–	–
Ø 3.0 mm	1220.03000	3.0 h9	0.1181 h9	–	•
Ø 4.0 mm	1220.04000	4.0 h9	0.1575 h9	–	•
Ø 5.0 mm	1220.05000	5.0 h9	0.1969 h9	–	•
Ø 6.0 mm	1220.06000	6.0 h9	0.2362 h9	–	•
Ø 7.0 mm	1220.07000	7.0–6.5	0.2756–0.2559	–	•
Ø 8.0 mm	1220.08000	8.0–7.5	0.315–0.2953	–	•
Ø 9.0 mm	1220.09000	9.0–8.5	0.3543–0.3346	–	•
Ø 10.0 mm	1220.10000	10.0–9.5	0.3937–0.374	–	•
Ø 11.0 mm	1220.11000	11.0–10.5	0.4331–0.4134	–	•
Ø 12.0 mm	1220.12000	12.0–11.5	0.4724–0.4528	–	•
Ø 13.0 mm	1220.13000	13.0–12.5	0.5118–0.4921	–	•
<b>ER 20-DM [inch]</b>					
INCH SET ER 20-DM	1220.00002	3.18–12.7	0.125–0.5	–	–
Ø 1/8"	1220.03182	3.18 h9	0.125 h9	1/8"	•
Ø 5/32"	1220.03972	3.97 h9	0.1563 h9	5/32"	–
Ø 3/16"	1220.04762	4.76 h9	0.1875 h9	3/16"	•
Ø 7/32"	1220.05562	5.56 h9	0.2188 h9	7/32"	–
Ø 1/4"	1220.06352	6.35 h9	0.25 h9	1/4"	•
Ø 9/32"	1220.07142	7.14–6.64	0.2813–0.2616	9/32"	–
Ø 5/16"	1220.07942	7.94–7.44	0.3125–0.2928	5/16"	•
Ø 11/32"	1220.08732	8.73–8.23	0.3438–0.3241	11/32"	–
Ø 3/8"	1220.09532	9.53–9.02	0.375–0.3553	3/8"	•
Ø 13/32"	1220.10322	10.32–9.82	0.4063–0.3866	13/32"	–
Ø 7/16"	1220.11112	11.11–10.61	0.4375–0.4178	7/16"	•
Ø 15/32"	1220.11912	11.91–11.41	0.4687–0.4491	15/32"	–
Ø 1/2"	1220.12702	12.7–12.2	0.5–0.4803	1/2"	•

## Metallic sealed collets ER-DM

Type	Part no.	Clamping range		Ø [inch]	Included in set
		[mm]	[decimal inch]		
<b>ER 25-DM [mm]</b>					
SET ER 25-DM	1225.00000	6.0–16.0	0.2362–0.6299	–	–
Ø 6.0 mm	1225.06000	6.0 h9	0.2362 h9	–	•
Ø 7.0 mm	1225.07000	7.0 h9	0.2756 h9	–	–
Ø 8.0 mm	1225.08000	8.0–7.5	0.315–0.2953	–	•
Ø 9.0 mm	1225.09000	9.0–8.5	0.3543–0.3347	–	–
Ø 10.0 mm	1225.10000	10.0–9.5	0.3937–0.374	–	•
Ø 11.0 mm	1225.11000	11.0–10.5	0.4331–0.4134	–	–
Ø 12.0 mm	1225.12000	12.0–11.5	0.4724–0.4528	–	•
Ø 13.0 mm	1225.13000	13.0–12.5	0.5118–0.4921	–	–
Ø 14.0 mm	1225.14000	14.0–13.5	0.5512–0.5315	–	•
Ø 15.0 mm	1225.15000	15.0–14.5	0.5906–0.5709	–	–
Ø 16.0 mm	1225.16000	16.0–15.5	0.6299–0.6102	–	•
<b>ER 25-DM [inch]</b>					
INCH SET ER 25-DM	1225.00002	6.35–15.88	0.25–0.625	–	–
Ø 7/32"	1225.05562	5.56 h9	0.2188 h9	7/32"	–
Ø 1/4"	1225.06352	6.35 h9	0.2500 h9	1/4"	•
Ø 9/32"	1225.07142	7.14 h9	0.2813 h9	9/32"	–
Ø 5/16"	1225.07942	7.94–7.44	0.3125–0.2928	5/16"	•
Ø 11/32"	1225.08732	8.73–8.23	0.3438–0.3241	11/32"	–
Ø 3/8"	1225.09532	9.53–9.02	0.375–0.3553	3/8"	•
Ø 13/32"	1225.10322	10.32–9.82	0.4063–0.3866	13/32"	–
Ø 7/16"	1225.11112	11.11–10.61	0.4375–0.4178	7/16"	•
Ø 15/32"	1225.11912	11.91–11.41	0.4687–0.4491	15/32"	–
Ø 1/2"	1225.12702	12.7–12.2	0.5–0.4803	1/2"	•
Ø 17/32"	1225.13492	13.49–12.99	0.5313–0.5116	17/32"	–
Ø 9/16"	1225.14292	14.29–13.79	0.5625–0.5428	9/16"	•
Ø 19/32"	1225.15082	15.08–14.58	0.5934–0.5741	19/32"	–
Ø 5/8"	1225.15882	15.88–15.38	0.625–0.6055	5/8"	•

## Expert advice

Please note that DM collets are not compatible with Weldon or Whistle notch shafts. To achieve internal cooling with Weldon or Whistle notch shafts, use the REGO-FIX sealing disks ER/DS with your REGO-FIX ER collet.



## Metallic sealed collets ER-DM

Type	Part no.	Clamping range		Ø [inch]	Included in set
		[mm]	[decimal inch]		
<b>ER 32-DM [mm]</b>					
SET ER 32-DM	1232.00000	6.0–20.0	0.2362–0.7874	–	–
Ø 6.0 mm	1232.06000	6.0 h9	0.2362 h9	–	•
Ø 7.0 mm	1232.07000	7.0 h9	0.2756 h9	–	–
Ø 8.0 mm	1232.08000	8.0–7.5	0.315–0.2953	–	•
Ø 9.0 mm	1232.09000	9.0–8.5	0.3543–0.3346	–	–
Ø 10.0 mm	1232.10000	10.0–9.5	0.3937–0.374	–	•
Ø 11.0 mm	1232.11000	11.0–10.5	0.4331–0.4134	–	–
Ø 12.0 mm	1232.12000	12.0–11.5	0.4724–0.4528	–	•
Ø 13.0 mm	1232.13000	13.0–12.5	0.5118–0.4921	–	–
Ø 14.0 mm	1232.14000	14.0–13.5	0.5512–0.5315	–	•
Ø 15.0 mm	1232.15000	15.0–14.5	0.5906–0.5709	–	–
Ø 16.0 mm	1232.16000	16.0–15.5	0.6299–0.6102	–	•
Ø 17.0 mm	1232.17000	17.0–16.5	0.6693–0.6496	–	–
Ø 18.0 mm	1232.18000	18.0–17.5	0.7087–0.689	–	•
Ø 19.0 mm	1232.19000	19.0–18.5	0.748–0.7283	–	–
Ø 20.0 mm	1232.20000	20.0–19.5	0.7874–0.7677	–	•

**ER 32-DM [inch]**

INCH SET ER 32-DM	1232.00002	6.35–19.05	0.25–0.75	–	–
Ø 1/4"	1232.06352	6.35 h9	0.25 h9	1/4"	•
Ø 9/32"	1232.07142	7.15 h9	0.2813 h9	9/32"	–
Ø 5/16"	1232.07942	7.94–7.44	0.3125–0.2928	5/16"	•
Ø 11/32"	1232.08732	8.73–8.23	0.3438–0.3241	11/32"	–
Ø 3/8"	1232.09532	9.53–9.02	0.375–0.3553	3/8"	•
Ø 13/32"	1232.10322	10.32–9.82	0.4063–0.3866	13/32"	–
Ø 7/16"	1232.11112	11.11–10.61	0.4375–0.4178	7/16"	•
Ø 15/32"	1232.11912	11.91–11.41	0.4687–0.4491	15/32"	–
Ø 1/2"	1232.12702	12.7–12.2	0.5–0.4803	1/2"	•
Ø 17/32"	1232.13492	13.5–12.99	0.5313–0.5116	17/32"	–
Ø 9/16"	1232.14292	14.29–13.79	0.5625–0.5428	9/16"	•
Ø 19/32"	1232.15082	15.07–14.58	0.5934–0.5741	19/32"	–
Ø 5/8"	1232.15882	15.88–15.38	0.625–0.6055	5/8"	•
Ø 21/32"	1232.16672	16.67–16.17	0.6563–0.6366	21/32"	–
Ø 11/16"	1232.17462	17.46–16.96	0.6875–0.6678	11/16"	•
Ø 23/32"	1232.18262	18.26–17.76	0.7188–0.6991	23/32"	–
Ø 3/4"	1232.19052	19.05–18.55	0.75–0.7303	3/4"	•

## CoolBore Peripheral Coolant Collets ER-CB

Peripheral cooling with ER-CB CoolBore collets

Type	Part no.	Clamping range	
		[mm]	[decimal inch]
<b>ER 16-CB – CoolBore</b>			
Ø 3.00 mm	1216.03009	3.0 h9	0.1181 h9
Ø 4.00 mm	1216.04009	4.0 h9	0.1575 h9
Ø 6.00 mm	1216.06009	6.0–5.5	0.2362–0.2165
Ø 8.00 mm	1216.08009	8.0–7.5	0.315–0.2953
Ø 1/8"	1216.03189	3.18 h9	0.125 h9
Ø 1/4"	1216.06359	6.35–5.85	0.25–0.2303

**ER 20-CB – CoolBore**

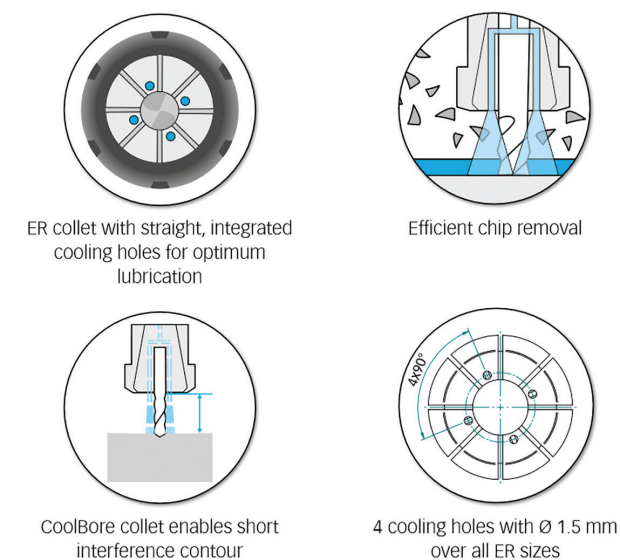
Ø 3.00 mm	1220.03009	3.0 h9	0.1181 h9
Ø 4.00 mm	1220.04009	4.0 h9	0.1575 h9
Ø 6.00 mm	1220.06009	6.0 h9	0.2362 h9
Ø 8.00 mm	1220.08009	8.0–7.5	0.315–0.2953
Ø 10.00 mm	1220.10009	10.0–9.5	0.3937–0.374

**ER 25-CB – CoolBore**

Ø 6.00 mm	1225.06009	6.0 h9	0.2362 h9
Ø 8.00 mm	1225.08009	8.0–7.5	0.315–0.2953
Ø 10.00 mm	1225.10009	10.0–9.5	0.3937–0.374
Ø 12.00 mm	1225.12009	12.0–11.5	0.4724–0.4528
Ø 16.00 mm	1225.16009	16.0–15.5	0.6299–0.6102
Ø 3/8"	1225.09539	9.53–9.02	0.375–0.3553
Ø 1/2"	1225.12709	12.7–12.2	0.5–0.4803

**ER 32-CB – CoolBore**

Ø 6.00 mm	1232.06009	6.0 h9	0.2362 h9
Ø 8.00 mm	1232.08009	8.0–7.5	0.315–0.2953
Ø 10.00 mm	1232.10009	10.0–9.5	0.3937–0.374
Ø 12.00 mm	1232.12009	12.0–11.5	0.4724–0.4528
Ø 16.00 mm	1232.16009	16.0–15.5	0.6299–0.6102
Ø 20.00 mm	1232.20009	20.0–19.5	0.7874–0.7677
Ø 1/2"	1232.12709	12.7–12.2	0.5–0.4803
Ø 5/8"	1232.15889	15.88–15.38	0.625–0.6055
Ø 3/4"	1232.19059	19.05–18.55	0.75–0.7303



ER collet with straight, integrated cooling holes for optimum lubrication

Efficient chip removal

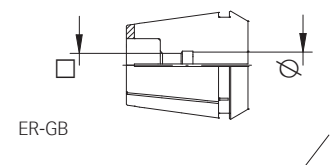
CoolBore collet enables short interference contour

4 cooling holes with Ø 1.5 mm over all ER sizes

# ER tapping collets ER-GB

Manufactured with a form-fitting internal square, the ER-GB collets successfully prevent the tap from slipping.

Dimensions [mm]		ER-GB					Standard
Ø	□	11	16	20	25	32	
2.5	2.1/2.0	1411.02500	-	-	-	-	DIN/ISO
2.8	2.1	1411.02800	1416.02800	-	-	-	DIN
3.5	2.7	1411.03500	1416.03500	1420.03500	-	-	DIN
4.0	3.0	1411.04000	-	-	-	-	DIN
4.0	3.15/3.2	1411.04002	1416.04002	1420.04002	1425.04002	1432.04002	ISO/JIS
4.5	3.4	1411.04500	1416.04500	1420.04500	1425.04500	1432.04500	DIN
5.0	4.0	1411.05002	1416.05002	1420.05002	1425.05002	1432.05002	ISO/JIS
5.5	4.3	-	1416.05500	1420.05500	1425.05500	1432.05500	DIN
5.5	4.5	-	1416.05501	1420.05501	1425.05501	1432.05501	JIS
6.0	4.5	-	1416.06001	1420.06001	1425.06001	1432.06001	JIS
6.0	4.9	1411.06000	1416.06000	1420.06000	1425.06000	1432.06000	DIN
6.2	5.0	-	1416.06201	1420.06201	1425.06201	1432.06201	JIS
6.3	5.0	-	1416.06302	1420.06302	1425.06302	1432.06302	ISO
7.0	5.5	-	1416.07000	1420.07000	1425.07000	1432.07000	DIN/JIS
7.1	5.6	-	1416.07102	1420.07102	1425.07102	1432.07102	ISO
8.0	6.2/6.3	-	1416.08000	1420.08000	1425.08000	1432.08000	DIN/ISO
8.5	6.5	-	1416.08501	1420.08501	1425.08501	1432.08501	JIS
9.0	7.0/7.1	-	1416.09000	1420.09000	1425.09000	1432.09000	DIN/ISO
10.0	8.0	-	-	1420.10000	1425.10000	1432.10000	DIN/ISO
10.5	8.0	-	-	1420.10501	1425.10501	1432.10501	JIS
11.0	9.0	-	-	1420.11000	1425.11000	1432.11000	DIN
11.2	9.0	-	-	1420.11202	1425.11202	1432.11202	ISO
12.0	9.0	-	-	1420.12000	1425.12000	1432.12000	DIN
12.5	10.0	-	-	-	1425.12502	1432.12502	ISO/JIS
14.0	11.0/11.2	-	-	-	1425.14000	1432.14000	DIN/ISO/JIS
15.0	12.0	-	-	-	1425.15001	1432.15001	JIS
16.0	12.0/12.5	-	-	-	1425.16000	1432.16000	DIN/ISO
17.0	13.0	-	-	-	-	1432.17001	JIS
18.0	14.0/14.5	-	-	-	-	1432.18000	DIN/ISO
20.0	16.0	-	-	-	-	1432.20000	DIN/ISO
22.0	18.0	-	-	-	-	-	DIN
25.0	20.0	-	-	-	-	-	DIN
28.0	22.0	-	-	-	-	-	DIN
32.0	24.0	-	-	-	-	-	DIN



# ER tapping collets

ER-GB [inch]

Dimensions [decimal inch]		ER-GB					Standard
Ø	□	11	16	20	25	32	
0.141"	0.11"	1411.03585	1416.03585	-	-	-	ANSI
0.168"	0.131"	1411.04275	1416.04275	1420.04275	1425.04275	1432.04275	ANSI
0.194"	0.152"	1411.04935	1416.04935	1420.04935	1425.04935	1432.04935	ANSI
0.22"	0.165"	-	1416.05595	1420.05595	1425.05595	1432.05595	ANSI
0.255"	0.191"	-	1416.06485	1420.06485	1425.06485	1432.06485	ANSI
0.318"	0.238"	-	1416.08085	1420.08085	1425.08085	1432.08085	ANSI
0.323"	0.242"	-	-	1420.08215	1425.08215	1432.08215	ANSI
0.367"	0.275"	-	-	1420.09325	1425.09325	1432.09325	ANSI
0.381"	0.286"	-	-	1420.09685	1425.09685	1432.09685	ANSI
0.429"	0.322"	-	-	-	1425.10905	1432.10905	ANSI
0.437"	0.328"	-	-	-	1425.11104	1432.11104	ANSI/NPT
0.48"	0.36"	-	-	-	1425.12195	1432.12195	ANSI
0.542"	0.406"	-	-	-	-	1432.13775	ANSI
0.562"	0.421"	-	-	-	-	1432.14274	ANSI/NPT
0.59"	0.442"	-	-	-	1425.14995	1432.14995	ANSI
0.652"	0.489"	-	-	-	-	1432.16565	ANSI
0.687"	0.515"	-	-	-	-	-	ANSI/NPT
0.697"	0.523"	-	-	-	-	-	ANSI
0.7"	0.531"	-	-	-	-	-	ANSI/NPT
0.76"	0.57"	-	-	-	-	-	ANSI
0.800"	0.600"	-	-	-	-	-	ANSI
0.896"	0.672"	-	-	-	-	-	ANSI
1.021"	0.766"	-	-	-	-	-	ANSI
1.108"	0.831"	-	-	-	-	-	ANSI
1.233"	0.925"	-	-	-	-	-	ANSI

Thread	Ø [inch]	□
No 0 – 6	0.141	0.110
1/16	0.141	0.110
3/32	0.141	0.110
1/8	0.141	0.110
5/32	0.168	0.131
No 8	0.168	0.131
3/16	0.194	0.152
No 9	0.194	0.152

Thread	Ø [inch]	□
No 10	0.194	0.152
1/4	0.255	0.191
5/16	0.318	0.238
3/8	0.381	0.286
7/16	0.323	0.242
1/2	0.367	0.275
9/16	0.429	0.322

Thread	Ø [inch]	□
5/8	0.480	0.360
11/16	0.542	0.406
3/4	0.590	0.442
13/16	0.652	0.489
7/8	0.697	0.523
15/16	0.760	0.570
1	0.800	0.600

# ER tapping collets PCM ET1

PCM ET1 tapping collets with axial compensation offer a smart and cost-effective toolholding option for machines which need axial compensation for tapping.

Shank Ø [mm]	PCM ET1					Standard
	12	16	20	25	32	
1.4	1512.01400	1516.01400	–	–	–	DIN/ISO
1.6	1512.01600	1516.01600	–	–	–	DIN
1.8	1512.01800	1516.01800	–	–	–	DIN
2.0	1512.02000	1516.02000	–	–	–	DIN
2.2	1512.02200	1516.02200	1520.02200	–	–	ISO/JIS
2.24	1512.02240	1516.02240	1520.02240	–	–	DIN
2.5	1512.02500	1516.02500	1520.02500	1525.02500	–	ISO/JIS
2.8	1512.02800	1516.02800	1520.02800	1525.02800	–	DIN
3.0	1512.03000	1516.03000	1520.03000	1525.03000	–	JIS
3.15	1512.03150	1516.03150	1520.03150	1525.03150	–	JIS
3.5	1512.03500	1516.03500	1520.03500	1525.03500	–	DIN
3.55	1512.03550	1516.03550	1520.03550	1525.03550	–	JIS
4.0	–	1516.04000	1520.04000	1525.04000	–	ISO
4.5	–	1516.04500	1520.04500	1525.04500	1532.04500	DIN/JIS
5.0	–	1516.05000	1520.05000	1525.05000	1532.05000	ISO
5.5	–	1516.05500	1520.05500	1525.05500	1532.05500	DIN/ISO
5.6	–	1516.05600	1520.05600	1525.05600	1532.05600	JIS
6.0	–	1516.06000	1520.06000	1525.06000	1532.06000	DIN/ISO
6.2	–	1516.06200	1520.06200	1525.06200	1532.06200	DIN/ISO
6.3	–	1516.06300	1520.06300	1525.06300	1532.06300	JIS
7.0	–	–	1520.07000	1525.07000	1532.07000	DIN
7.1	–	–	–	1525.07100	1532.07100	ISO
8.0	–	–	–	1525.08000	1532.08000	DIN
8.5	–	–	–	1525.08500	1532.08500	ISO/JIS
9.0	–	–	–	1525.09000	1532.09000	DIN/ISO/JIS
10.0	–	–	–	1525.10000	1532.10000	JIS
10.5	–	–	–	–	1532.10500	DIN/ISO
11.0	–	–	–	–	1532.11000	JIS
11.2	–	–	–	–	1532.11200	DIN/ISO
12.0	–	–	–	–	1532.12000	DIN/ISO
12.5	–	–	–	–	1532.12500	DIN
14.0	–	–	–	–	–	DIN
15.0	–	–	–	–	–	DIN
16.0	–	–	–	–	–	DIN
17.0	–	–	–	–	–	JIS



PCM ET1-ER 12 is technically identical to ER 11 and fits all ER11 toolholders

## ER tapping collets

### PCM ET1 [inch]

Shank Ø [inch]	[mm]	PCM ET1				
		12	16	20	25	32
0.141	3.580	1512.03581	1516.03581	1520.03581	1525.03581	–
0.168	4.270	–	1516.04271	1520.04271	1525.04271	1532.04721
0.194	4.930	–	1516.04931	1520.04931	1525.04931	1532.04931
0.220	5.590	–	1516.05591	1520.05591	1525.05591	1532.05591
0.255	6.480	–	–	1520.06481	1525.06481	1532.06481
0.318	8.080	–	–	–	1525.08081	1532.08081
0.323	8.205	–	–	–	1525.08211	1532.08211
0.367	9.320	–	–	–	1525.09321	1532.09321
0.381	9.680	–	–	–	1525.09681	1532.09681
0.429	10.900	–	–	–	–	1532.10901
0.437	11.113	–	–	–	–	1532.11111
0.480	12.192	–	–	–	–	1532.12191
0.542	13.770	–	–	–	–	–
0.562	14.290	–	–	–	–	–
0.590	14.990	–	–	–	–	–
0.652	16.560	–	–	–	–	–
0.697	17.700	–	–	–	–	–

PCM ET1-ER 12 is technically identical to ER 11 and fits all ER11 toolholders

Thread	Ø [inch]	□
No 0 – 6	0.141	0.110
1/16	0.141	0.110
3/32	0.141	0.110
1/8	0.141	0.110
5/32	0.168	0.131
No 8	0.168	0.131
3/16	0.194	0.152
No 9	0.194	0.152

Thread	Ø [inch]	□
No 10	0.194	0.152
1/4	0.255	0.191
5/16	0.318	0.238
3/8	0.381	0.286
7/16	0.323	0.242
1/2	0.367	0.275
9/16	0.429	0.322

Thread	Ø [inch]	□
5/8	0.480	0.360
11/16	0.542	0.406
3/4	0.590	0.442
13/16	0.652	0.489
7/8	0.697	0.523
15/16	0.760	0.570
1	0.800	0.600

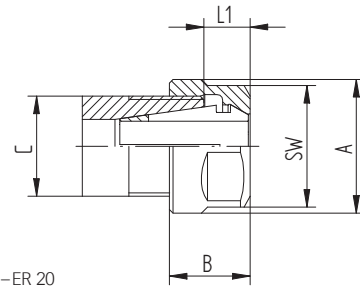
#### Expert advice

Not for coolant through tools and not for applications with sealing disks.

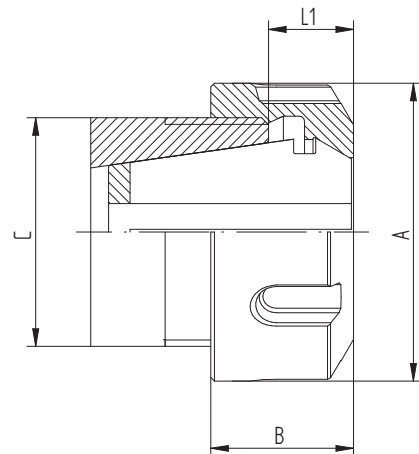
# Hi-Q®/ER standard clamping nuts

Type	Part no.	Dimensions [mm]					C	Accessory Wrench
		A	B	L1	SW			
<b>Hi-Q®/ER 11</b>								
Hi-Q®/ER 11	3411.00000	19	11.3	4.9–6.6	17	M 14 x 0.75	E 11 P	
Hi-Q®/ER 11 L	3411.02000	19	11.3	4.9–6.6	17	M 14 x 0.75-LH	E 11 P	
<b>Hi-Q®/ER 16</b>								
Hi-Q®/ER 16	3416.00000	28	17.5	7.0–10.5	25	M 22 x 1.5	E 16 P	
Hi-Q®/ER 16 L	3416.02000	28	17.5	7.0–10.5	25	M 22 x 1.5-LH	E 16 P	
<b>Hi-Q®/ER 20</b>								
Hi-Q®/ER 20	3420.00000	34	19	8.0–11.5	30	M 25 x 1.5	E 20 P	
Hi-Q®/ER 20 L	3420.02000	34	19	8.0–11.5	30	M 25 x 1.5-LH	E 20 P	
<b>Hi-Q®/ER 25</b>								
Hi-Q®/ER 25	3425.00000	42	20	8.5–12.0	–	M 32 x 1.5	E 25	
Hi-Q®/ER 25 L	3425.02000	42	20	8.5–12.0	–	M 32 x 1.5-LH	E 25	
<b>Hi-Q®/ER 32</b>								
Hi-Q®/ER 32	3432.00000	50	22.5	9.5–13.0	–	M 40 x 1.5	E 32	
Hi-Q®/ER 32 L	3432.02000	50	22.5	9.5–13.0	–	M 40 x 1.5-LH	E 32	

L = left-threaded nuts



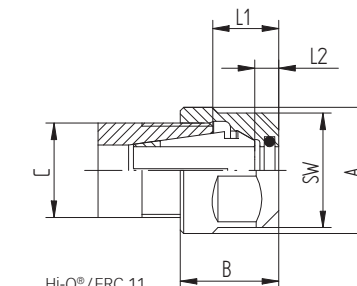
Hi-Q®/ER 11–ER 20



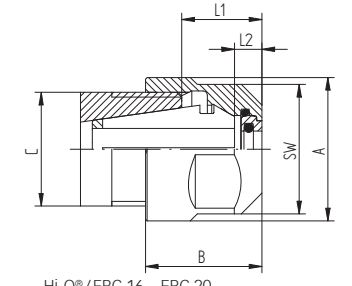
Hi-Q®/ER 25

# Hi-Q®/ERC for coolant through tools

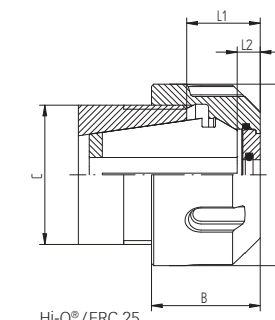
Type	Part no.	Dimensions [mm]					C	Bore-Ø		Accessory Wrench
		A	B	L1	L2	SW		[mm]	[inch]	
<b>Hi-Q®/ERC 11</b>										
Hi-Q®/ERC 11, Ø 3.0 mm	3411.20300	19	14.6	8.1–9.8	3.5	17	M 14 x 0.75	3.0–2.5	3/32"	E 11 P
Hi-Q®/ERC 11, Ø 3.5 mm	3411.20350	19	14.6	8.1–9.8	3.5	17	M 14 x 0.75	3.5–3.0	1/8"	E 11 P
Hi-Q®/ERC 11, Ø 4.0 mm	3411.20400	19	14.6	8.1–9.8	3.5	17	M 14 x 0.75	4.0–3.5	5/32"	E 11 P
Hi-Q®/ERC 11, Ø 4.5 mm	3411.20450	19	14.6	8.1–9.8	3.5	17	M 14 x 0.75	4.5–4.0	–	E 11 P
Hi-Q®/ERC 11, Ø 5.0 mm	3411.20500	19	14.6	8.1–9.8	3.5	17	M 14 x 0.75	5.0–4.5	3/16"	E 11 P
Hi-Q®/ERC 11, Ø 5.5 mm	3411.20550	19	14.6	8.1–9.8	3.5	17	M 14 x 0.75	5.5–5.0	7/32"	E 11 P
Hi-Q®/ERC 11, Ø 6.0 mm	3411.20600	19	14.6	8.1–9.8	3.5	17	M 14 x 0.75	6.0–5.5	–	E 11 P
Hi-Q®/ERC 11, Ø 6.5 mm	3411.20650	19	14.6	8.1–9.8	3.5	17	M 14 x 0.75	6.5–6.0	1/4"	E 11 P
Hi-Q®/ERC 11, Ø 7.0 mm	3411.20700	19	14.6	8.1–9.8	3.5	17	M 14 x 0.75	7.0–6.5	–	E 11 P
<b>Hi-Q®/ERC 11</b>										
Hi-Q®/ERC 11	3411.20000	19	14.6	8.1–9.8	3.5	17	M 14 x 0.75	3.0–6.0	–	E 11 P
<b>Hi-Q®/ERC 16</b>										
Hi-Q®/ERC 16	3416.20000	25	22.5	12.0–15.5	5	25	M 22 x 1.5	22.5	–	E 16 P
<b>Hi-Q®/ERC 20</b>										
Hi-Q®/ERC 20	3420.20000	34	24	13.0–16.5	5	30	M 25 x 1.5	24	–	E 20 P
<b>Hi-Q®/ERC 25</b>										
Hi-Q®/ERC 25	3425.20000	42	25	13.5–17.0	5	–	M 32 x 1.5	25	–	E 25
<b>Hi-Q®/ERC 32</b>										
Hi-Q®/ERC 32	3432.20000	50	27.5	14.5–18.0	5	–	M 40 x 1.5	27.5	–	E 32



Hi-Q®/ERC 11



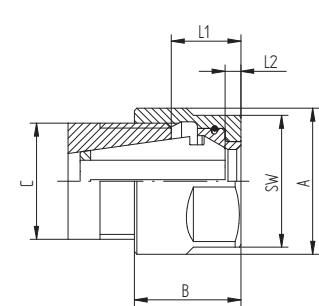
Hi-Q®/ERC 16 – ERC 20



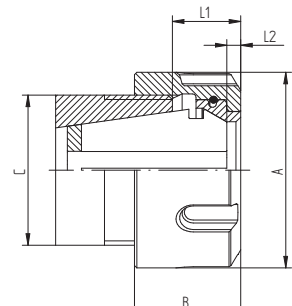
Hi-Q®/ERC 25

# Hi-Q®/ERB friction-bearing Hi-Q®/ERBC for coolant through tools

Type	Part no.	Dimensions [mm]					C	Accessory Wrench
		A	B	L1	L2	SW		
<b>Hi-Q®/ERB 16</b>								
Hi-Q®/ERB 16	3416.30000	28	20.2	10.0–13.6	3	25	M 22 x 1.5	E 16 P
<b>Hi-Q®/ERB 20</b>								
Hi-Q®/ERB 20	3420.30000	34	21.7	11.0–14.5	3	30	M 25 x 1.5	E 20 P
<b>Hi-Q®/ERB 25</b>								
Hi-Q®/ERB 25	3425.30000	42	22.6	11.5–15.0	3	–	M 32 x 1.5	E 25
<b>Hi-Q®/ERB 32</b>								
Hi-Q®/ERB 32	3432.30000	50	25	12.5–16.0	3	–	M 40 x 1.5	E 32

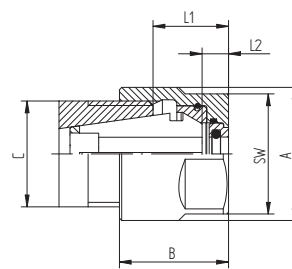


Hi-Q®/ERB 16 – ERB 20

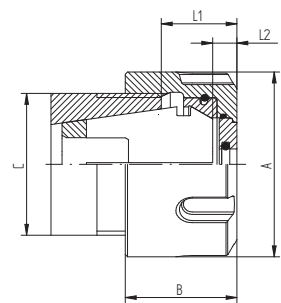


Hi-Q®/ERB 25 – ERB 50

<b>Hi-Q®/ERBC 16</b>								
Hi-Q®/ERBC 16	3416.40000	28	22.7	12.5–16.0	5.5	25	M 22 x 1.5	E 16 P
<b>Hi-Q®/ERBC 20</b>								
Hi-Q®/ERBC 20	3420.40000	34	24.2	13.5–17.0	5.5	30	M 25 x 1.5	E 20 P
<b>Hi-Q®/ERBC 25</b>								
Hi-Q®/ERBC 25	3425.40000	42	25.2	14.0–17.5	5.5	–	M 32 x 1.5	E 25
<b>Hi-Q®/ERBC 32</b>								
Hi-Q®/ERBC 32	3432.40000	50	27.4	15.0–18.5	5.5	–	M 40 x 1.5	E 32



Hi-Q®/ERBC 16 – ERBC 20



Hi-Q®/ERBC 25 – ERBC 40

# ER MS clamping nuts for highest RPM

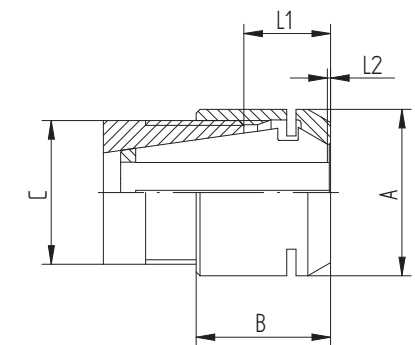
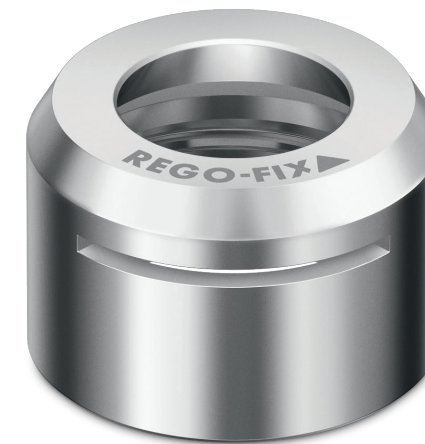
**Application** The ER MS clamping nut for highest RPM with minimal external diameter does not have the collet-locking system and all the contours are ground. This provides best balancing for critical high-speed machining applications.

The collet is released with the corresponding E MS wrench. ER MS nuts are also interchangeable with the Hi-Q®/ERM and Hi-Q®/ERMC nuts. With the ER MS clamping nuts we recommend using ER-UP (ultra-precision) collets to achieve the highest runout TIR.

### Key advantages

- // Precision-machined contours on all sides
- // Minimal residual unbalance
- // For high rpm up to 80,000

Type	Part no.	Dimensions [mm]				C	Accessory Wrench
		A	B	L1	L2		
<b>ER 8 MS</b>							
ER 8 MS	3208.50000	12	10.8	4.3–6.1	1.5	M 10 x 0.75	E 8 MS
<b>ER 11 MS</b>							
ER 11 MS	3211.50000	16	11.5	4.6–6.8	0.4	M 13 x 0.75	E 11 MS
<b>ER 16 MS</b>							
ER 16 MS	3216.50000	22	17.8	6.1–10.5	0.3	M 19 x 1	E 16 MS
<b>ER 20 MS</b>							
ER 20 MS	3220.50000	28	19	7.1–11.5	0.6	M 24 x 1	E 20 MS



ER MS

# Hi-Q®/ERM minimal external diameter Hi-Q®/ERMC for coolant through tools

**Application** The mini clamping nut Hi-Q®/ERM is recommended for use where minimal external diameters are essential (e.g., machining space is very limited). Thus, it is ideally suitable for multispindle drilling heads and toolholder extensions. The corresponding wrenches have the same external dimensions as the clamping nuts.

**Application with sealing disk/coolant flush disk** The Hi-Q®/ERMC clamping nut is intended for use with the sealing disk system DS/ER and the coolant flush system KS/ER. The disk system allows the use of all standard ER collets, ultraprecision collets and tapping collets for coolant through tools.

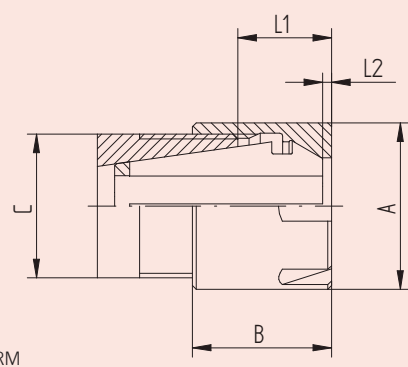
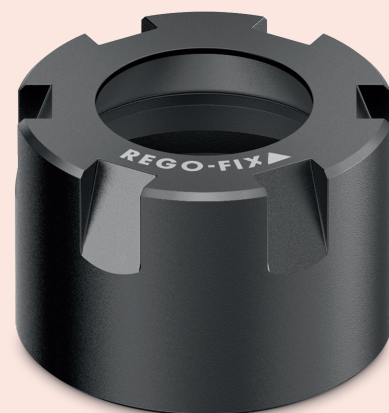
- // Up to 150 bar / 2100 PSI coolant pressure
- // Prevents dirt and chips from entering the collet

*For peripheral cooling of non coolant through tools we recommend the coolant flush disks KS/ER. Please refer to page 52. Accessories are not included in delivery.*

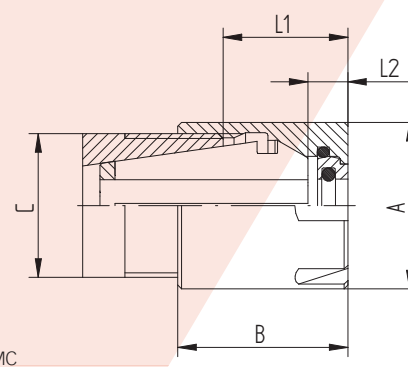
**Hi-Q®/ERMC 11** This clamping nut is recommended for use where minimal external diameters are important. It is the coolant through tools version of the Hi-Q®/ERM 11 clamping nut.

**Hi-Q®/ERMC 11 does not require sealing disks** The sealing system is built into the clamping nut.

- // Up to 150 bar / 2100 PSI coolant pressure
- // Prevents dirt and chips from entering the collet
- // Not interchangeable with nuts according to DIN 6499/ISO 15488



Hi-Q®/ERM



Hi-Q®/ERMC

## Hi-Q®/ERM Hi-Q®/ERMC

Type	Part no.	Dimensions [mm]				C	Bore Ø		Accessory Wrench
		A	B	L1	L2		[inch]	[mm]	
<b>Hi-Q®/ERM 8</b>									
Hi-Q®/ERM 8	3508.00000	12	10.8	4.3–6.1	1.5	M 10 x 0.75	–	–	E 8 M
Hi-Q®/ERM 8 L	3508.02000	12	10.8	4.3–6.1	1.5	M 10 x 0.75-LH	–	–	E 8 M

<b>Hi-Q®/ERM 11</b>									
Hi-Q®/ERM 11	3511.00000	16	12	5.7–7.5	0.4	M 13 x 0.75	–	–	E 11 M
Hi-Q®/ERM 11 L	3511.02000	16	12	5.7–7.5	0.4	M 13 x 0.75-LH	–	–	E 11 M

<b>Hi-Q®/ERM 16</b>									
Hi-Q®/ERM 16	3516.00000	22	18.4	8.0–11.5	0.9	M 19 x 1	–	–	E 16 M
Hi-Q®/ERM 16 L	3516.02000	22	18.4	8.0–11.5	0.9	M 19 x 1-LH	–	–	E 16 M

<b>Hi-Q®/ERM 20</b>									
Hi-Q®/ERM 20	3520.00000	28	19	8.0–11.5	–	M 24 x 1	–	–	E 20 M
Hi-Q®/ERM 20 L	3520.02000	28	19	8.0–11.5	–	M 24 x 1-LH	–	–	E 20 M

<b>Hi-Q®/ERM 25</b>									
Hi-Q®/ERM 25	3525.00000	35	20	8.5–12.0	–	M 30 x 1	–	–	E 25 M
Hi-Q®/ERM 25 L	3525.02000	35	20	8.5–12.0	–	M 30 x 1-LH	–	–	E 25 M

L = left-threaded nuts

Type	Part no.	Dimensions [mm]				C	Bore Ø		Accessory Wrench
		A	B	L1	L2		[mm]	[inch]	
<b>Hi-Q®/ERMC 11</b>									
Hi-Q®/ERMC 11, Ø 3.0 mm	3511.20300	16	14.6	8.1–9.8	3.5	M 13 x 0.75	3.0–2.5	3/32"	E 11 M
Hi-Q®/ERMC 11, Ø 3.5 mm	3511.20350	16	14.6	8.1–9.8	3.5	M 13 x 0.75	3.5–3.0	1/8"	E 11 M
Hi-Q®/ERMC 11, Ø 4.0 mm	3511.20400	16	14.6	8.1–9.8	3.5	M 13 x 0.75	4.0–3.5	5/32"	E 11 M
Hi-Q®/ERMC 11, Ø 4.5 mm	3511.20450	16	14.6	8.1–9.8	3.5	M 13 x 0.75	4.5–4.0	–	E 11 M
Hi-Q®/ERMC 11, Ø 5.0 mm	3511.20500	16	14.6	8.1–9.8	3.5	M 13 x 0.75	5.0–4.5	3/16"	E 11 M
Hi-Q®/ERMC 11, Ø 5.5 mm	3511.20550	16	14.6	8.1–9.8	3.5	M 13 x 0.75	5.5–5.0	7/32"	E 11 M
Hi-Q®/ERMC 11, Ø 6.0 mm	3511.20600	16	14.6	8.1–9.8	3.5	M 13 x 0.75	6.0–5.5	–	E 11 M
Hi-Q®/ERMC 11, Ø 6.5 mm	3511.20650	16	14.6	8.1–9.8	3.5	M 13 x 0.75	6.5–6.0	1/4"	E 11 M
Hi-Q®/ERMC 11, Ø 7.0 mm	3511.20700	16	14.6	8.1–9.8	3.5	M 13 x 0.75	7.0–6.5	–	E 11 M

<b>Hi-Q®/ERMC 16</b>									
Hi-Q®/ERMC 16	3516.20000	22	22	11.5–15.0	4.5	M 19 x 1	–	–	E 16 M

<b>Hi-Q®/ERMC 20</b>									
Hi-Q®/ERMC 20	3520.20000	28	24	13–16.5	5	M 24 x 1	–	–	E 20 M

<b>Hi-Q®/ERMC 25</b>									
Hi-Q®/ERMC 25	3525.20000	35	25	13.5–17.0	5	M 30 x 1	–	–	E 25 M

# Hi-Q®/ERMX und Hi-Q®/ERMXC intRlox® Slip-off proof mini clamping nuts

**Application** For REGO-FIX ER toolholders with mini thread and cylindrical holders.

**Key advantages**

- // Design is ideally suited for lathes and Swiss turning machines
- // Very slim sizing proofs suitable for machines where space is limited
- // Safe handling thanks to the patented intRlox® profile
- // Slip-off proof design with all advantages of the regular mini clamping nuts
- // Easy and safe clamping with the MX wrench

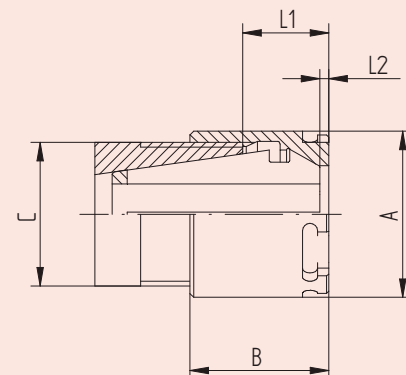
**Application with sealing disk / coolant flush disk** The Hi-Q®/ERMXC clamping nut is intended for use with the sealing disk system DS/ER and the coolant flush system KS/ER. The disk system allows the use of all standard ER collets, ultraprecision collets and tapping collets for coolant through tools.

- // Up to 150 bar / 2100 PSI coolant pressure
- // Prevents dirt and chips from entering the collet

*For peripheral cooling of non coolant through tools we recommend the coolant flush disks KS/ER. Please refer to page 52. Accessories are not included in delivery.*



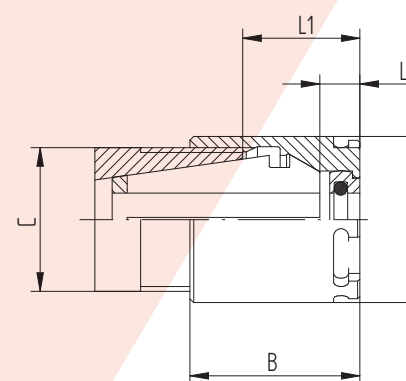
Hi-Q®/ERMX



Hi-Q®/ERMX



Hi-Q®/ERMXC



Hi-Q®/ERMXC

## Hi-Q®/ERMX intRlox® Hi-Q®/ERMXC intRlox®

ERMX ERMXC

Type	Part no.	Dimensions [mm]				C	Accessory Wrench
		A	B	L1	L2		
<b>Hi-Q®/ERMX 8</b>							
Hi-Q®/ERMX 8	3508.60000	12	11	4.3-6.1	0.4	M 10 x 0.75	E 8 MX
<b>Hi-Q®/ERMX 11</b>							
Hi-Q®/ERMX 11	3511.60000	16	12	5.7-7.5	0.4	M 13 x 0.75	E 11 MX
<b>Hi-Q®/ERMX 16</b>							
Hi-Q®/ERMX 16	3516.60000	22	18.4	8.0-11.5	0.9	M 19 x 1	E 16 MX
<b>Hi-Q®/ERMX 20</b>							
Hi-Q®/ERMX 20	3520.60000	28	19	8.0-11.5	0.0	M 24 x 1	E 20 MX
<b>Hi-Q®/ERMX 25</b>							
Hi-Q®/ERMX 25	3525.60000	35	20	8.5-12.0	0.0	M 30 x 1	E 25 MX

Type	Part no.	Dimensions [mm]				C	Accessory Wrench
		A	B	L1	L2		
<b>Hi-Q®/ERMXC 11</b>							
Hi-Q®/ERMXC 11	3511.70000	16	14.6	7.5-9.3	3.5	M 13 x 0.75	E 11 MX
<b>Hi-Q®/ERMXC 16</b>							
Hi-Q®/ERMXC 16	3516.70000	22	22.5	11.5-15.0	4.5	M 19 x 1	E 16 MX
<b>Hi-Q®/ERMXC 20</b>							
Hi-Q®/ERMXC 20	3520.70000	28	24	13.0-16.5	5	M 24 x 1	E 20 MX
<b>Hi-Q®/ERMXC 25</b>							
Hi-Q®/ERMXC 25	3525.70000	35	25	13.0-17.0	5	M 30 x 1	E 25 MX

# Hi-Q®/ERAX with external thread Hi-Q®/ERAXC for coolant through tools

**Application** For REGO-FIX floating chucks and other ER toolholders with internal thread, e.g., ERA holders. These nuts can also be used on driven tools with internal threads.

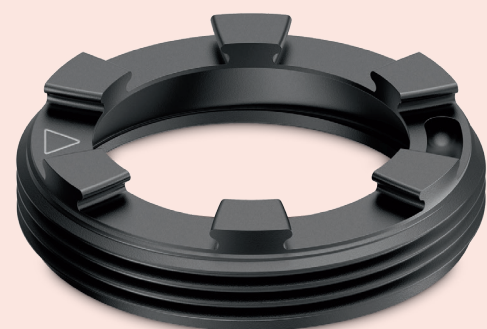
**Key advantages**

- // Space-saving design for ideal use on long-turning machines
- // S-profile wrench is self-centering on the nut and prevents slipping off while tightening the nut

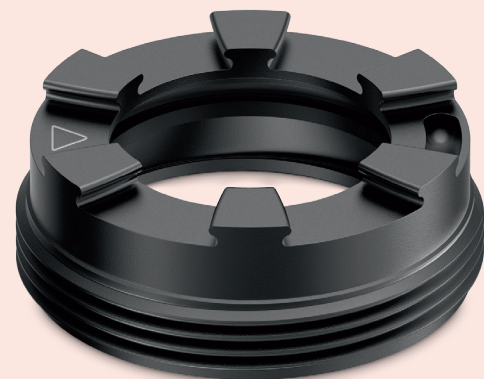
**Application with sealing disk / coolant flush disk** The Hi-Q®/ERAXC clamping nut is intended for use with the sealing disk system DS/ER and the coolant flush system KS/ER. The disk system allows the use of all standard ER collets, ultraprecision collets and tapping collets for coolant through tools.

- // Up to 150 bar / 2100 PSI coolant pressure
- // Prevents dirt and chips from entering the collet

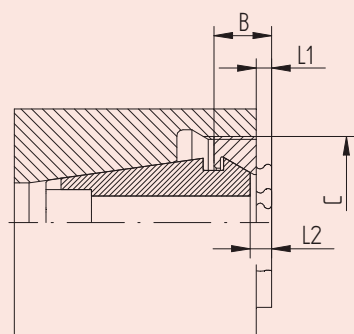
*For peripheral cooling of non coolant through tools we recommend the coolant flush disks KS/ER. Please refer to page 52.*



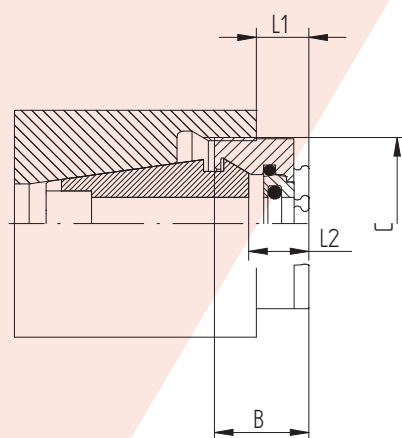
Hi-Q®/ERAX



Hi-Q®/ERAXC



Hi-Q®/ERAX



Hi-Q®/ERAXC

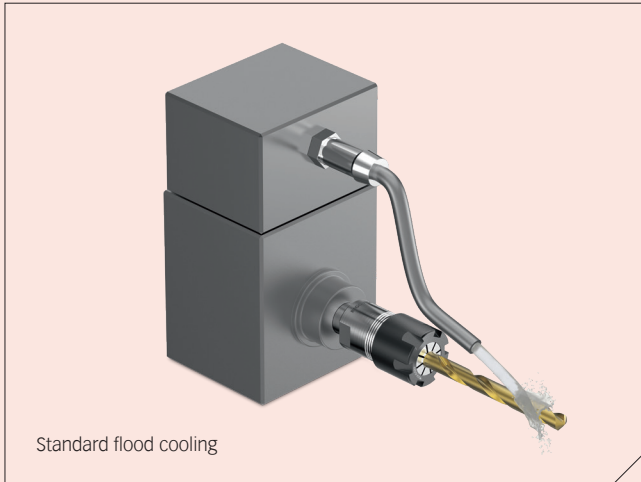
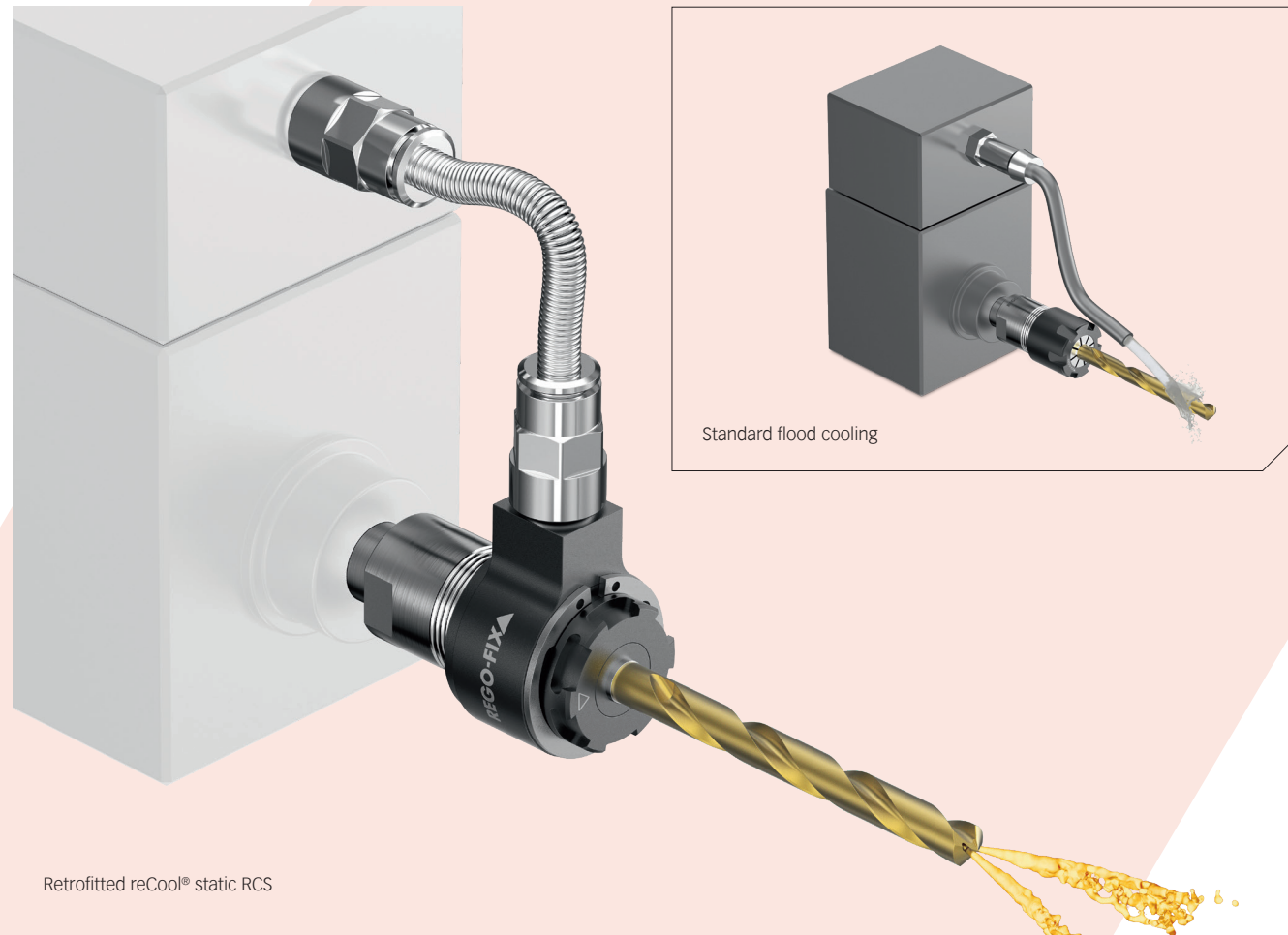
## Hi-Q®/ERAX Hi-Q®/ERAXC

Type	Part no.	Dimensions [mm]			C	Accessory Wrench
		B	L1	L2		
<b>Hi-Q®/ERAX 11</b>						
Hi-Q®/ERAX 11	3311.60000	7.5	1.0-3.2	3.9	M 18 x 1	E 11 AX
<b>Hi-Q®/ERAX 16</b>						
Hi-Q®/ERAX 16	3316.60000	7.6	0-2.6	2.3	M 24 x 1	E 16 AX
<b>Hi-Q®/ERAX 20</b>						
Hi-Q®/ERAX 20	3320.60000	8.5	0-2.5	2.3	M 28 x 1.5	E 20 AX
<b>Hi-Q®/ERAX 25</b>						
Hi-Q®/ERAX 25	3325.60000	8.8	0-1.9	2.3	M 32 x 1.5	E 25 AX
<b>Hi-Q®/ERAX 32</b>						
Hi-Q®/ERAX 32	3332.60000	9.8	0-1.1	2.5	M 40 x 1.5	E 32 AX

Typ	Part no.	Dimensions [mm]			C	Accessory Wrench
		B	L1	L2		
<b>Hi-Q®/ERAXC 11</b>						
Hi-Q®/ERAXC 11	3311.70000	9.2	2.7-4.9	6.1	M 18 x 1	E 11 AX
<b>Hi-Q®/ERAXC 16</b>						
Hi-Q®/ERAXC 16	3316.70000	12.5	3.1-7.5	7.2	M 24 x 1	E 16 AX
<b>Hi-Q®/ERAXC 20</b>						
Hi-Q®/ERAXC 20	3320.70000	13.5	3.1-7.5	7.3	M 28 x 1.5	E 20 AX
<b>Hi-Q®/ERAXC 25</b>						
Hi-Q®/ERAXC 25	3325.70000	13.8	2.5-6.9	7.3	M 32 x 1.5	E 25 AX
<b>Hi-Q®/ERAXC 32</b>						
Hi-Q®/ERAXC 32	3332.70000	14.9	1.8-6.2	7.6	M 40 x 1.5	E 32 AX



# Fast and easy retrofitting: From external flood cooling to internal cooling



Retrofitted reCool® static RCS

### Key features of reCool® static RCS for use with static holders

- // Cost-friendly conversion of existing static tooling systems to through coolant in only two minutes
- // For ER collets (DIN 6499/ISO 15488) in stationary toolholders with external fine threads
- // Coolant pressures of up to 150 bar / 2100 PSI\*
- // RCS/ERMX for emulsion and oil coolants
- // Low-maintenance design
- // For coolant through tools (with sealing disks DS) and for peripheral cooling (with coolant flush disks KS)
- // Not for use with sealed collets DM

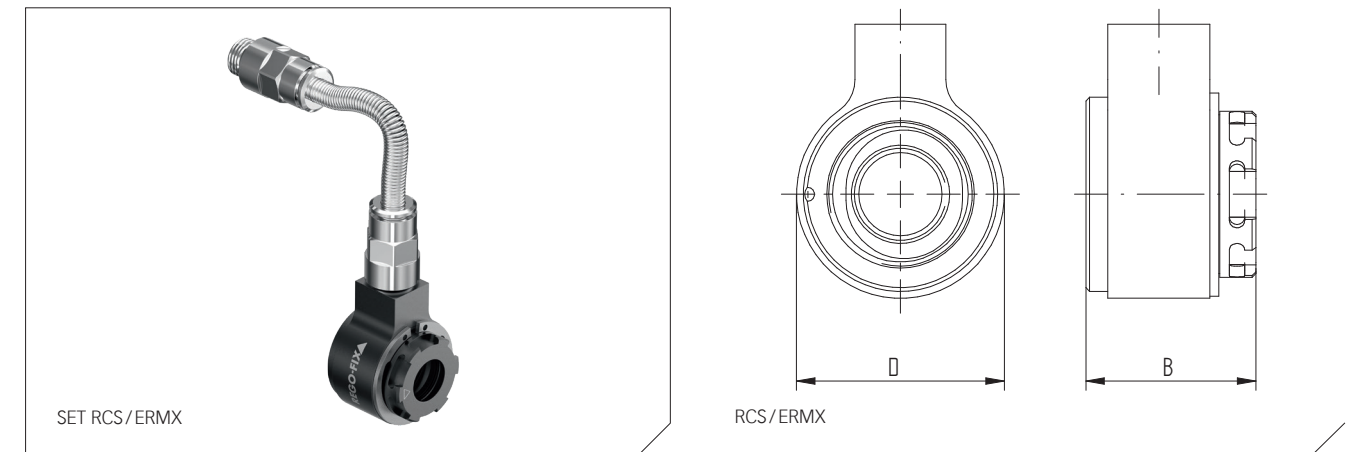
\* With high-pressure hoses RHS-HP. 100 bar / 1400 PSI with standard hose Accessories are not included in delivery.

### Advantages of internal cooling with reCool®

- // Optimized coolant supply to the cutting edge: increases tool life and reduces cycle time
- // Best chip removal
- // No scattering or spray losses

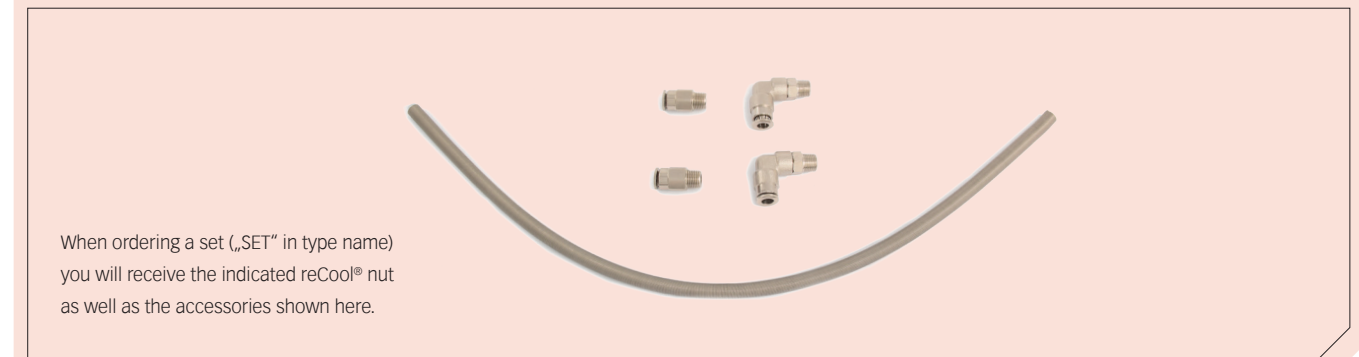
## reCool® static coolant supply system RCS

Type	Part no.	Dimensions [mm]		Thread	Accessory Wrench	Included in set RCR	
		B	D			Type	Qty.
<b>Set RCS (for emulsion- and oil-based coolants)</b>							
SET RCS/ERMX 16	3716.50000	22.5	27.5	M 19 x 1	E 16 MX	RCS/ERMX 16/20	1
SET RCS/ERMX 20	3720.50000	24	34.5	M 24 x 1	E 20 MX	SET RHS-100	1
						SET RVG-100 1/8" - 0°	2
						SET RVA-100 1/8" - 90°	2
<b>RCS/ERMX nut only (for emulsion- and oil-based coolants)</b>							
RCS/ERMX 16	3716.59000	22.5	27.5	M 19 x 1	E 16 MX		
RCS/ERMX 20	3720.59000	24	34.5	M 24 x 1	E 20 MX		



### reCool® sets overview

## reCool® RCS and reCool® RCR sets



# Low-cost retrofitting to internal cooling



Retrofitted with reCool® rotary RCR/ER, RCR/ERM

## Key features of reCool® rotary RCR for use with spindles

- // Cost-friendly conversion of existing driven tooling systems to through coolant in only two minutes
- // For ER and ERM thread in driven tools and turning machines and for ER collets to DIN 6499/ISO 15488
- // Speeds up to 12,000 rpm
- // Coolant pressures up to 150 bar with high-pressure hose, standard hose max. 100 bar / 1400 PSI
- // Low-maintenance coolant lubricated bearings
- // For coolant through tools (with sealing disks DS/ER) and for peripheral cooling (with coolant flush disks KS/ER)
- // RCR/ER(M) for emulsion and oil coolants
- // Not for use with sealed collets DM

*Accessories are not included in delivery.*

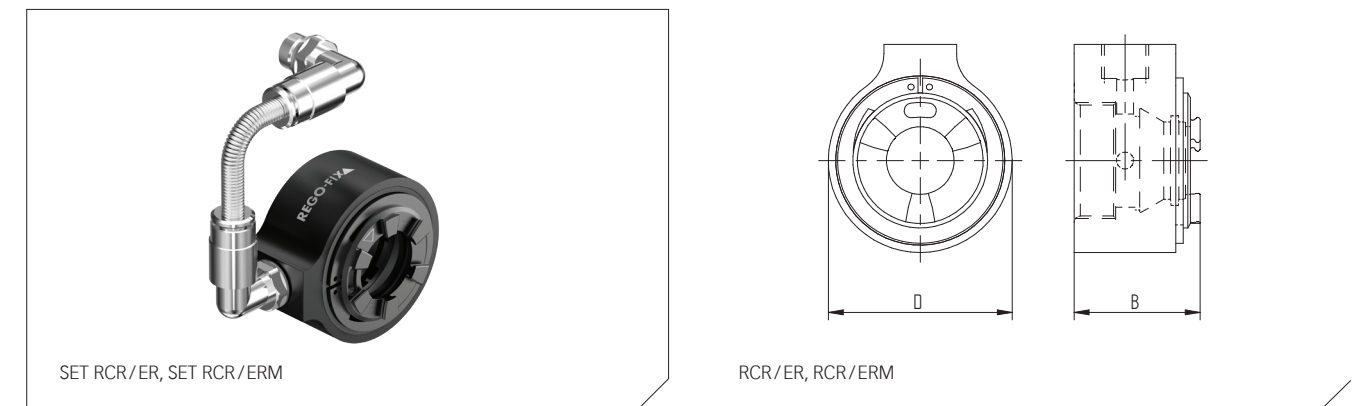
## Advantages of internal cooling with reCool®

- // Optimized coolant supply to the cutting edge: increases tool life and reduces cycle time
- // Best chip removal
- // No scattering or spray losses

## reCool® rotary coolant supply system RCS

Type	Part no.	Dimensions [mm]			Thread	Accessory Wrench	Included in set RCR/ER	
		B	D				Type	Qty.
<b>Set RCR/ER (for emulsion- and oil-based coolants)</b>								
SET RCR/ER 11	3711.10000	16.6	21.75	M 14 x 0.75	E 11 AX		RCR/ER 11-40	1
SET RCR/ER 16	3716.10000	24.5	34	M 22 x 1.5	E 16 AX		SET RHS-100	1
SET RCR/ER 20	3720.10000	26	40	M 25 x 1.5	E 20 AX		SET RVG-100 1/8"-0°	2
SET RCR/ER 25	3725.10000	27	50	M 32 x 1.5	E 25 AX		SET RVA-100 1/8"-90°	2
SET RCR/ER 32	3732.10000	29.5	62.5	M 40 x 1.5	E 32 AX			

Type	Part no.	Dimensions [mm]			Thread	Accessory Wrench	Included in set RCR/ERM	
		B	D				Type	Qty.
<b>RCR/ER nut only (for emulsion- and oil-based coolants)</b>								
RCR/ER 11	3711.19000	16.6	21.75	M 14 x 0.75	E 11 AX			
RCR/ER 16	3716.19000	24.5	34	M 22 x 1.5	E 16 AX			
RCR/ER 20	3720.19000	26	40	M 25 x 1.5	E 20 AX			
RCR/ER 25	3725.19000	27	50	M 32 x 1.5	E 25 AX			
RCR/ER 32	3732.19000	29.5	62.5	M 40 x 1.5	E 32 AX			

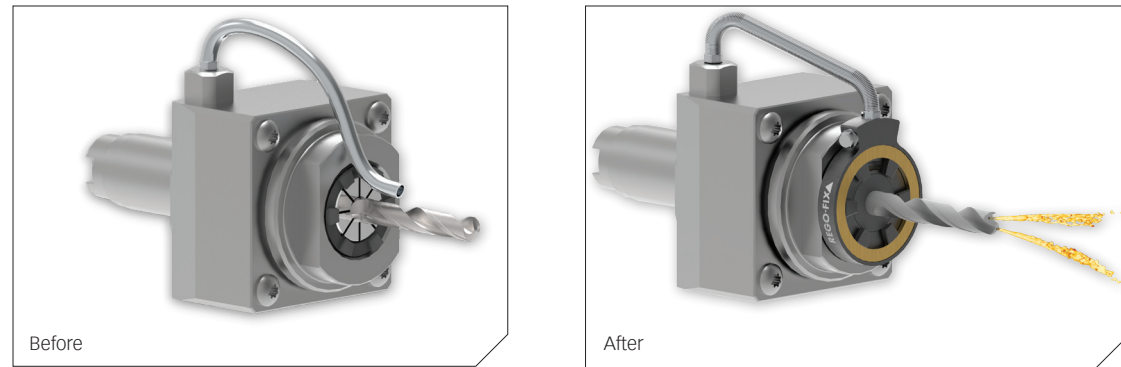


Type	Part no.	Dimensions [mm]			Thread	Accessory Wrench	Included in set RCR/ERM	
		B	D				Type	Qty.
<b>Set RCR/ERM (for emulsion- and oil-based coolants)</b>								
SET RCR/ERM 11	3711.30000	16.6	21.75	M 13 x 0.75	E 11 AX		RCR/ERM 11-25	1
SET RCR/ERM 16	3716.30000	24.5	31	M 19 x 1	E 16 AX		SET RHS-100	1
SET RCR/ERM 20	3720.30000	26	38	M 24 x 1	E 20 AX		SET RVG-100 1/8"-0°	2
SET RCR/ERM 25	3725.30000	27	46	M 30 x 1	E 25 AX		SET RVA-100 1/8"-90°	2

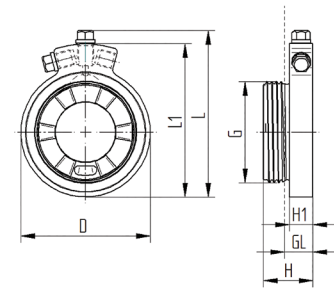
Type	Part no.	Dimensions [mm]			Thread	Accessory Wrench	Included in set RCR/ERM	
		B	D				Type	Qty.
<b>RCR/ERM nut only (for emulsion- and oil-based coolants)</b>								
RCR/ERM 11	3711.39000	16.6	21.75	M 13 x 0.75	E 11 AX			
RCR/ERM 16	3716.39000	24.5	31	M 19 x 1	E 16 AX			
RCR/ERM 20	3720.39000	26	38	M 24 x 1	E 20 AX			
RCR/ERM 25	3725.39000	27	46	M 30 x 1	E 25 AX			

# reCool® ERAX

Retrofit driven tools and turning machines to internal cooling with reCool®



- // For driven tools with inner thread
- // Short design: optimizing machining range
- // Maximum pressure: 100 bar
- // Maximum RPM: 12,000 min<sup>-1</sup>
- // Copper-like coating for reduced friction
- // Tools shank diameter 3 – 20 mm
- // Suited for emulsion and oil
- // To be used with KS/DS disks



Type	Part no.	d [mm]	L [mm]	L1 [mm]	H [mm]	H1 [mm]	GL [mm]	G
<b>Coolant supply system with outer thread, rotational (includes nut only)</b>								
RCR/ERAX 16	3716.29000	34.0	46.0	41.5	14.5	7.6	9.0	M24 x 1.0
RCR/ERAX 20	3720.29000	37.5	49.5	45.0	15.5	7.6	9.0	M28 x 1.5
RCR/ERAX 25	3725.29000	41.0	53.0	48.5	15.8	7.6	9.0	M32 x 1.5
RCR/ERAX 32	3732.29000	49.0	61.0	56.5	16.9	7.6	9.0	M40 x 1.5



RCR/ERAX

Type	Part no.	Length	Included
<b>Steelflex hose for RCR/ERAX</b>			
SET RHS-AX L080	3799.99080	80 mm	Hollow bolt SET HS6100RF6
SET RHS-AX L100	3799.99100	100 mm	Hollow bolt SET HS6100RF6
SET RHS-AX L120	3799.99120	120 mm	Hollow bolt SET HS6100RF6
SET RHS-AX L140	3799.99140	140 mm	Hollow bolt SET HS6100RF6
SET RHS-AX L160	3799.99160	160 mm	Hollow bolt SET HS6100RF6
SET RHS-AX L180	3799.99180	180 mm	Hollow bolt SET HS6100RF6



Steelflex hose

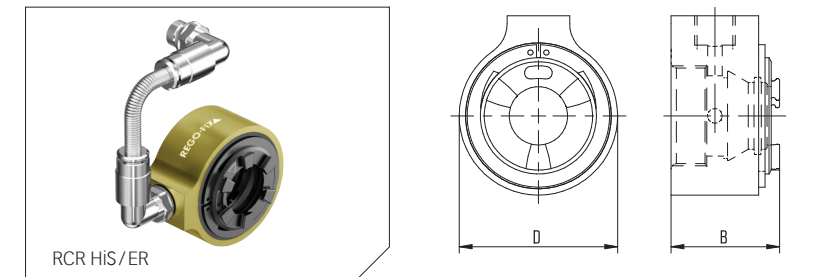
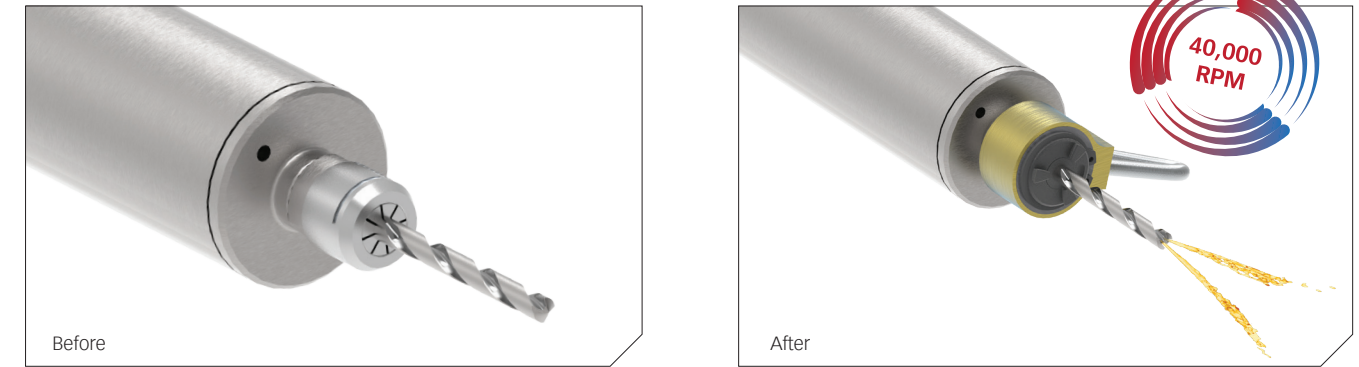
Type	Part no.	Description
<b>Hollow bolt for RCR/ERAX</b>		
SET HS8100RF8	3799.90808	Hollow bolt M8x1.00 mm and ringfitting Ø 8.00 mm
SET HS8125RF8	3799.90818	Hollow bolt M8x1.25 mm and ringfitting Ø 8.00 mm
SET HS6100RF6	3799.90606	Hollow bolt M6x1.00 mm and ringfitting Ø 6.00 mm
SET HS10100RF10	3799.91010	Hollow bolt M10x1.00 mm and ringfitting Ø 10.00 mm
SET HS18RF10	3799.91810	Hollow bolt 1/8" and ringfitting Ø 10.00 mm



Hollow bolt set

# reCool® Hi-S / ER

Upgrade high-speed & high-frequency spindles to internal cooling with reCool®



RCR Hi-S/ER

- // For high speed / high frequency spindles
- // ER 11 & 16 available
- // Maximum pressure: 100 bar
- // Maximum RPM: 40,000 min<sup>-1</sup>
- // Emulsion & oil
- // Ceramic coating for reduced friction
- // To be used with DS & KS disks

Type	Part no.	Dimensions [mm]		Thread	Accessory Wrench	Included in set RCR Hi-S/ER & ERM	
		B	D			Type	Qty.
<b>Set RCR Hi-S/ER (for emulsion- and oil-based coolants)</b>							
SET RCR Hi-S/ER 11	3711.60000	16.5	21.75	M 14 x 0.75	E 11 AX	SET RHS-100	1
SET RCR Hi-S/ER 16	3716.60000	24.5	34	M 22 x 1.5	E 16 AX	SET RVG-100/8"–0°	2
						SET RVA-100/8"–90°	2

<b>RCR Hi-S/ER nut only (for emulsion- and oil-based coolants)</b>							
RCR Hi-S/ER 11	3711.69000	16.5	21.75	M 14 x 0.75	E 11 AX		
RCR Hi-S/ER 16	3716.69000	24.5	34	M 22 x 1.5	E 16 AX		

<b>Set RCR Hi-S/ERM (for emulsion- and oil-based coolants)</b>							
SET RCR Hi-S/ERM 11	3711.70000	16.5	21.75	M 13 x 0.75	E 11 AX		
SET RCR Hi-S/ERM 16	3716.70000	24.5	31	M 19 x 1	E 16 AX		

<b>RCR Hi-S/ERM nut only (for emulsion- and oil-based coolants)</b>							
RCR Hi-S/ERM 11	3711.79000	16.5	21.75	M 13 x 0.75	E 11 AX		
RCR Hi-S/ERM 16	3716.79000	24.5	31	M 19 x 1	E 16 AX		

# Internal Cooling Sealing Disks DS/ER

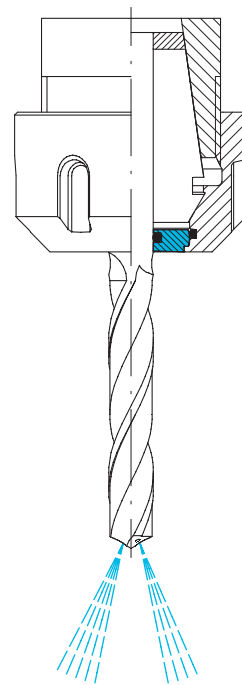
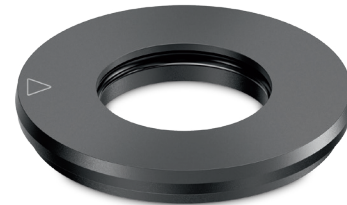
Type	Part no.	Ø [inch]	[mm]	Incl. in set
<b>DS/ER 11</b>				
Ø 3.0 mm	3911.00300	–	3.0	–
Ø 1/8"	3911.00318	1/8"	–	–
Ø 4.0 mm	3911.00400	5/32"	4.0	–
Ø 3/16"	3911.00476	3/16"	–	–
Ø 5.0 mm	3911.00500	–	5.0	–
Ø 6.0 mm	3911.00600	–	6.0	–
Ø 1/4"	3911.00635	1/4"	–	–
BLANK DS/ER 11	3911.09999	–	–	–

ER 11 has no sealing range and can only be used nominally. Assembling with mounting tool MWZ.

<b>DS/ER 16</b>				
DS/ER 16 SET (14 pcs.)	3916.00000	–	3.0–10.0	–
Ø 2.0 mm	3916.00200	–	2.0–1.5	–
Ø 2.5 mm	3916.00250	–	2.5–2.0	–
Ø 3.0 mm	3916.00300	3/32"	3.0–2.5	–
Ø 3.5 mm	3916.00350	1/8"	3.5–3.0	•
Ø 4.0 mm	3916.00400	5/32"	4.0–3.5	•
Ø 4.5 mm	3916.00450	–	4.5–4.0	•
Ø 5.0 mm	3916.00500	3/16"	5.0–4.5	•
Ø 5.5 mm	3916.00550	7/32"	5.5–5.0	•
Ø 6.0 mm	3916.00600	–	6.0–5.5	•
Ø 6.5 mm	3916.00650	1/4"	6.5–6.0	•
Ø 7.0 mm	3916.00700	–	7.0–6.5	•
Ø 7.5 mm	3916.00750	9/32"	7.5–7.0	•
Ø 8.0 mm	3916.00800	5/16"	8.0–7.5	•
Ø 8.5 mm	3916.00850	–	8.5–8.0	•
Ø 9.0 mm	3916.00900	11/32"	9.0–8.5	•
Ø 9.5 mm	3916.00950	3/8"	9.5–9.0	•
Ø 10.0 mm	3916.01000	–	10.0–9.5	•
BLANK DS/ER 16	3916.09999	–	–	–

Included in the DS/ER sets are all marked disks within that ER size and the matching disk tray DSR

<b>DS/ER 20</b>				
SET DS/ER 20 (20 pcs.)	3920.00000	–	3.0–13.0	–
Ø 3.0 mm	3920.00300	3/32"	3.0–2.5	–
Ø 3.5 mm	3920.00350	1/8"	3.5–3.0	•
Ø 4.0 mm	3920.00400	5/32"	4.0–3.5	•
Ø 4.5 mm	3920.00450	–	4.5–4.0	•
Ø 5.0 mm	3920.00500	3/16"	5.0–4.5	•
Ø 5.5 mm	3920.00550	7/32"	5.5–5.0	•
Ø 6.0 mm	3920.00600	–	6.0–5.5	•
Ø 6.5 mm	3920.00650	1/4"	6.5–6.0	•
Ø 7.0 mm	3920.00700	–	7.0–6.5	•
Ø 7.5 mm	3920.00750	9/32"	7.5–7.0	•
Ø 8.0 mm	3920.00800	5/16"	8.0–7.5	•



## Coolant-thru Sealing disks for ER

Type	Part no.	Ø [inch]	[mm]	Incl. in set
Ø 8.5 mm	3920.00850	–	8.5–8.0	•
Ø 9.0 mm	3920.00900	11/32"	9.0–8.5	•
Ø 9.5 mm	3920.00950	3/8"	9.5–9.0	•
Ø 10.0 mm	3920.01000	–	10.0–9.5	•
Ø 10.5 mm	3920.01050	13/32"	10.5–10.0	•
Ø 11.0 mm	3920.01100	–	11.0–10.5	•
Ø 11.5 mm	3920.01150	7/16"	11.5–11.0	•
Ø 12.0 mm	3920.01200	15/32"	12.0–11.5	•
Ø 12.5 mm	3920.01250	–	12.5–12.0	•
Ø 13.0 mm	3920.01300	1/2"	13.0–12.5	•
BLANK DS/ER 20	3920.09999	–	–	–

Included in the DS/ER sets are all marked disks within that ER size and the matching disk tray DSR

<b>DS/ER 25</b>				
SET DS/ER 25 (26 pcs.)	3925.00000	–	3.0–16.0	–
Ø 3.0 mm	3925.00300	3/32"	3.0–2.5	–
Ø 3.5 mm	3925.00350	1/8"	3.5–3.0	•
Ø 4.0 mm	3925.00400	5/32"	4.0–3.5	•
Ø 4.5 mm	3925.00450	–	4.5–4.0	•
Ø 5.0 mm	3925.00500	3/16"	5.0–4.5	•
Ø 5.5 mm	3925.00550	7/32"	5.5–5.0	•
Ø 6.0 mm	3925.00600	–	6.0–5.5	•
Ø 6.5 mm	3925.00650	1/4"	6.5–6.0	•
Ø 7.0 mm	3925.00700	–	7.0–6.5	•
Ø 7.5 mm	3925.00750	9/32"	7.5–7.0	•
Ø 8.0 mm	3925.00800	5/16"	8.0–7.5	•
Ø 8.5 mm	3925.00850	–	8.5–8.0	•
Ø 9.0 mm	3925.00900	11/32"	9.0–8.5	•
Ø 9.5 mm	3925.00950	3/8"	9.5–9.0	•
Ø 10.0 mm	3925.01000	–	10.0–9.5	•
Ø 10.5 mm	3925.01050	13/32"	10.5–10.0	•
Ø 11.0 mm	3925.01100	–	11.0–10.5	•
Ø 11.5 mm	3925.01150	7/16"	11.5–11.0	•
Ø 12.0 mm	3925.01200	15/32"	12.0–11.5	•
Ø 12.5 mm	3925.01250	–	12.5–12.0	•
Ø 13.0 mm	3925.01300	1/2"	13.0–12.5	•
Ø 13.5 mm	3925.01350	17/32"	13.5–13.0	•
Ø 14.0 mm	3925.01400	–	14.0–13.5	•
Ø 14.5 mm	3925.01450	9/16"	14.5–14.0	•
Ø 15.0 mm	3925.01500	–	15.0–14.5	•
Ø 15.5 mm	3925.01550	19/32"	15.5–15.0	•
Ø 16.0 mm	3925.01600	5/8"	16.0–15.5	•
BLANK DS/ER 25	3925.09999	–	–	–

Included in the DS/ER sets are all marked disks within that ER size and the matching disk tray DSR

## Sealing disks for ER

DS/ER

DS/MR

Type	Part no.	Tool diameter		Incl. in set
		Ø [inch]	[mm]	
<b>DS/ER 32</b>				
DS/ER 32 SET (34 pcs.)	3932.00000	–	3.0–20.0	–
Ø 2.0 mm	3932.00200	–	2.0–1.5	–
Ø 3.0 mm	3932.00300	3/32"	3.0–2.5	–
Ø 3.5 mm	3932.00350	1/8"	3.5–3.0	•
Ø 4.0 mm	3932.00400	5/32"	4.0–3.5	•
Ø 4.5 mm	3932.00450	–	4.5–4.0	•
Ø 5.0 mm	3932.00500	3/16"	5.0–4.5	•
Ø 5.5 mm	3932.00550	7/32"	5.5–5.0	•
Ø 6.0 mm	3932.00600	–	6.0–5.5	•
Ø 6.5 mm	3932.00650	1/4"	6.5–6.0	•
Ø 7.0 mm	3932.00700	–	7.0–6.5	•
Ø 7.5 mm	3932.00750	9/32"	7.5–7.0	•
Ø 8.0 mm	3932.00800	5/16"	8.0–7.5	•
Ø 8.5 mm	3932.00850	–	8.5–8.0	•
Ø 9.0 mm	3932.00900	11/32"	9.0–8.5	•
Ø 9.5 mm	3932.00950	3/8"	9.5–9.0	•
Ø 10.0 mm	3932.01000	–	10.0–9.5	•
Ø 10.5 mm	3932.01050	13/32"	10.5–10.0	•
Ø 11.0 mm	3932.01100	–	11.0–10.5	•
Ø 11.5 mm	3932.01150	7/16"	11.5–11.0	•
Ø 12.0 mm	3932.01200	15/32"	12.0–11.5	•
Ø 12.5 mm	3932.01250	–	12.5–12.0	•
Ø 13.0 mm	3932.01300	1/2"	13.0–12.5	•
Ø 13.5 mm	3932.01350	17/32"	13.5–13.0	•
Ø 14.0 mm	3932.01400	–	14.0–13.5	•
Ø 14.5 mm	3932.01450	9/16"	14.5–14.0	•
Ø 15.0 mm	3932.01500	–	15.0–14.5	•
Ø 15.5 mm	3932.01550	19/32"	15.5–15.0	•
Ø 16.0 mm	3932.01600	5/8"	16.0–15.5	•
Ø 16.5 mm	3932.01650	–	16.5–16.0	•
Ø 17.0 mm	3932.01700	21/32"	17.0–16.5	•
Ø 17.5 mm	3932.01750	11/16"	17.5–17.0	•
Ø 18.0 mm	3932.01800	–	18.0–17.5	•
Ø 18.5 mm	3932.01850	23/32"	18.5–18.0	•
Ø 19.0 mm	3932.01900	3/4"	19.0–18.5	•
Ø 19.5 mm	3932.01950	–	19.5–19.0	•
Ø 20.0 mm	3932.02000	25/32"	20.0–19.5	•
BLANK DS/ER 32	3932.09999	–	–	–

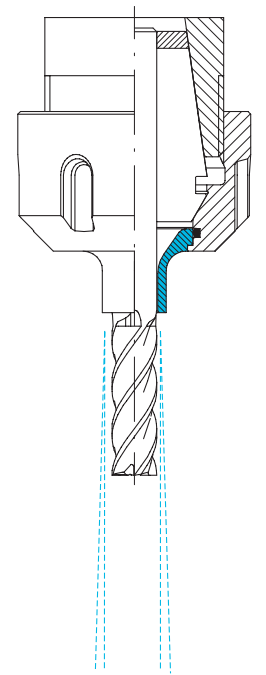
Included in the DS/ER sets are all marked disks within that ER size and the matching disk tray DSR

## Our solution for peripheral cooling

The design of our coolant flush disks leads the coolant along the edge of the cutting tool, providing you with an easy way to achieve peripheral cooling.

Type	Part no.	Dimensions [mm]		Ø	
		D	L	[mm]	[inch]
<b>KS/ER 11 [mm]/[inch]</b>					
Ø 3.0 mm/1/8"	3911.30318	5.6	5.5	3	1/8"
Ø 4.0 mm	3911.20400	6.4	5.5	4	–
Ø 5.0 mm/3/16"	3911.20500	7.5	5.5	5	3/16"
Ø 6.0 mm/1/4"	3911.30635	7.5	5.5	6	1/4"
BLANK KS/ER 11 Ø 7.5 x 8	3911.29999	7.5	8	–	–
<b>KS/ER 16 [mm]</b>					
Ø 3.0 mm	3916.20300	6.4	11	3	–
Ø 4.0 mm	3916.20400	7.4	11	4	–
Ø 5.0 mm	3916.20500	8.4	11	5	–
Ø 6.0 mm	3916.20600	9.4	11	6	–
Ø 7.0 mm	3916.20700	11	11	7	–
Ø 8.0 mm	3916.20800	11	11	8	–
Ø 9.0 mm	3916.20900	11	2	9	–
Ø 10.0 mm	3916.21000	11	2	10	–
BLANK KS/ER 16 Ø 11 x 12*	3916.29999	11	12	–	–
<b>KS/ER 16 [inch]</b>					
Ø 1/8"	3916.30318	6.6	11	3.175	1/8"
Ø 3/16"	3916.30476	8.2	11	4.763	3/16"
Ø 1/4"	3916.30635	9.7	11	6.35	1/4"
Ø 5/16"	3916.30794	11	11	7.938	5/16"
Ø 3/8"	3916.30953	11	2	9.525	3/8"
<b>KS/ER 20 [mm]</b>					
Ø 3.0 mm	3920.20300	6.4	11	3	–
Ø 4.0 mm	3920.20400	7.4	11	4	–
Ø 5.0 mm	3920.20500	8.4	11	5	–
Ø 6.0 mm	3920.20600	9.4	11	6	–
Ø 7.0 mm	3920.20700	10.4	11	7	–
Ø 8.0 mm	3920.20800	11.4	11	8	–
Ø 9.0 mm	3920.20900	12.4	11	9	–
Ø 10.0 mm	3920.21000	14	11	10	–
Ø 12.0 mm	3920.21200	14	3	12	–
BLANK KS/ER 20 Ø 14 x 12*	3920.29999	14	12	–	–

\*Work material: 42CrMoS4 (1.7227)



## Coolant flush disks for ER

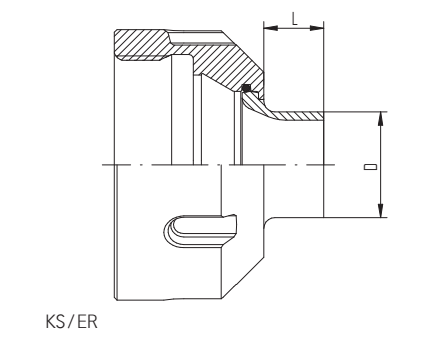
Type	Part no.	Dimensions [mm]			Ø [inch]
		D	L	[mm]	
<b>KS/ER 20 [inch]</b>					
Ø 1/8"	3920.30318	6.6	11	3.175	1/8"
Ø 3/16"	3920.30476	8.2	11	4.763	3/16"
Ø 1/4"	3920.30635	9.7	11	6.35	1/4"
Ø 5/16"	3920.30794	11.3	11	7.983	5/16"
Ø 3/8"	3920.30953	14	11	9.525	3/8"
Ø 7/16"	3920.31111	14	11	11.113	7/16"
Ø 1/2"	3920.31270	14	3	12.7	1/2"
<b>KS/ER 25 [mm]</b>					
Ø 3.0 mm	3925.20300	6.4	11	3	-
Ø 4.0 mm	3925.20400	7.4	11	4	-
Ø 5.0 mm	3925.20500	8.4	11	5	-
Ø 6.0 mm	3925.20600	9.4	11	6	-
Ø 7.0 mm	3925.20700	10.4	11	7	-
Ø 8.0 mm	3925.20800	11.4	11	8	-
Ø 9.0 mm	3925.20900	12.4	11	9	-
Ø 10.0 mm	3925.21000	13.4	11	10	-
Ø 12.0 mm	3925.21200	15.4	11	12	-
Ø 14.0 mm	3925.21400	17.4	11	14	-
Ø 16.0 mm	3925.21600	19	11	16	-
BLANK KS/ER 25 Ø 19 x 12*	3925.29999	19	12	-	-
<b>KS/ER 25 [inch]</b>					
Ø 1/8"	3925.30318	6.6	11	3.175	1/8"
Ø 3/16"	3925.30476	8.2	11	4.763	3/16"
Ø 1/4"	3925.30635	9.7	11	6.35	1/4"
Ø 5/16"	3925.30794	11.3	11	7.938	5/16"
Ø 3/8"	3925.30953	12.9	11	9.525	3/8"
Ø 7/16"	3925.31111	14.5	11	11.113	7/16"
Ø 1/2"	3925.31270	16.1	11	12.7	1/2"
Ø 9/16"	3925.31429	17.7	11	14.288	9/16"
Ø 5/8"	3925.31588	19	11	15.875	5/8"

\*Work material: 42CrMoS4 (1.7227)

## Coolant flush disks for ER/MR

Type	Part no.	Dimensions [mm]			Ø [inch]	System
		D	L	[mm]		
<b>KS/ER 32 [mm]</b>						
Ø 3.0 mm	3932.20300	6.4	11	3	-	●●
Ø 4.0 mm	3932.20400	7.4	11	4	-	●●
Ø 5.0 mm	3932.20500	8.4	11	5	-	●●
Ø 6.0 mm	3932.20600	9.4	11	6	-	●●
Ø 7.0 mm	3932.20700	10.4	11	7	-	●●
Ø 8.0 mm	3932.20800	11.4	11	8	-	●●
Ø 9.0 mm	3932.20900	12.4	11	9	-	●●
Ø 10.0 mm	3932.21000	13.4	11	10	-	●●
Ø 12.0 mm	3932.21200	15.4	11	12	-	●●
Ø 14.0 mm	3932.21400	17.4	11	14	-	●●
Ø 16.0 mm	3932.21600	19.4	11	16	-	●●
Ø 18.0 mm	3932.21800	21.4	11	18	-	●●
Ø 20.0 mm	3932.22000	24	11	20	-	●●
BLANK KS/ER 32 Ø 24 x 12*	3932.29999	24	12	-	-	●●
<b>KS/ER 32 [inch]</b>						
Ø 1/8"	3932.30318	6.6	11	3.175	1/8"	●●
Ø 3/16"	3932.30476	8.2	11	4.763	3/16"	●●
Ø 1/4"	3932.30635	9.7	11	6.35	1/4"	●●
Ø 5/16"	3932.30794	11.3	11	7.938	5/16"	●●
Ø 3/8"	3932.30953	12.9	11	9.525	3/8"	●●
Ø 7/16"	3932.31111	14.5	11	11.113	7/16"	●●
Ø 1/2"	3932.31270	16.1	11	12.7	1/2"	●●
Ø 9/16"	3932.31429	17.7	11	14.288	9/16"	●●
Ø 5/8"	3932.31588	19.3	11	15.875	5/8"	●●
Ø 3/4"	3932.31905	24	11	19.05	3/4"	●●

\*Work material: 42CrMoS4 (1.7227).



# Spanner & torque wrenches

E MS	E AX	E
E P	E M	E MX

Type	Part no.	A [mm]	B [mm]
<b>E MS</b>			
E 8 MS	7114.08000	19	76
E 11 MS	7114.11000	22	100
E 16 MS	7114.16000	33	130
E 20 MS	7114.20000	42	140

<b>E AX</b>			
E 11 AX	7117.11000	16	108
E 16 AX	7117.16000	22	131
E 20 AX	7117.20000	26	148
E 25 AX	7117.25000	30	165
E 32 AX	7117.32000	37	196

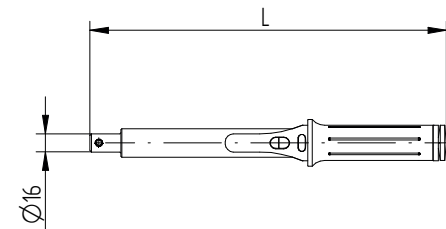
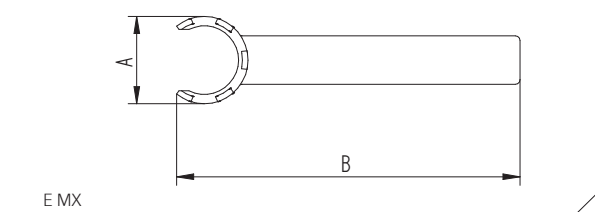
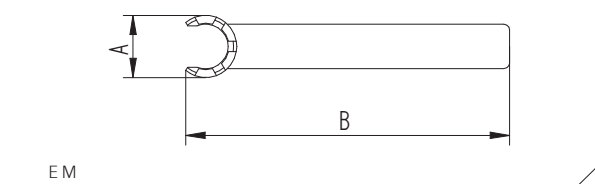
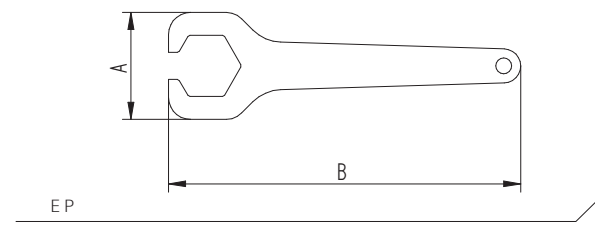
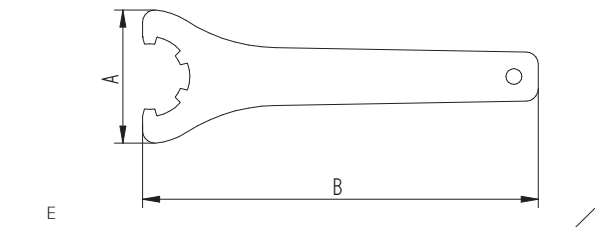
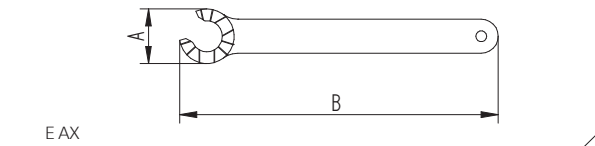
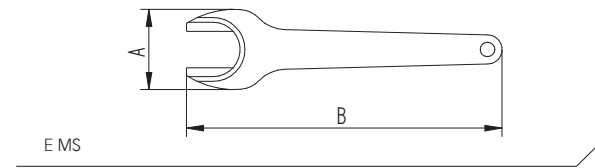
<b>E</b>			
E 16	7111.16000	55	163
E 20	7111.20000	60	183
E 25	7111.25000	70	203
E 32	7111.32000	80	253

<b>E P</b>			
E 11 P	7112.11010	32	95
E 16 P	7112.16010	44	145
E 20 P	7112.20010	52	170

<b>E M</b>			
E 8 M	7113.08000	12	74
E 11 M	7113.11000	17	95
E 16 M	7113.16000	22	117
E 20 M	7113.20000	29	129
E 25 M	7113.25000	36	141

<b>E MX</b>			
E 8 MX	7118.08000	12	74
E 11 MX	7118.11000	17	95
E 16 MX	7118.16000	22.5	117
E 20 MX	7118.20000	29	129
E 25 MX	7118.25000	36	141

Type	Part no.	L1 [mm]	Range [Nm]	Range [ft-lbs]
<b>TORCO-FIX Torque Wrenches</b>				
TORCO-FIX 0	7150.02025	290	5-25	3.5-18
TORCO-FIX I	7150.05050	335	10-50	7.5-36.5
TORCO-FIX II	7150.20200	465	40-200	26.5-147
TORCO-FIX III	7150.60300	565	60-300	44.5-221



# Wrench heads & extensions

A-E	A-E P	A-E M
A-E MX	A-E MS	A-E AX

Type	Part no.	A [mm]	B [mm]
<b>A-E</b>			
A-E 16	7151.16000	55	62
A-E 20	7151.20000	60	62
A-E 25	7151.25000	70	72
A-E 32	7151.32000	80	72

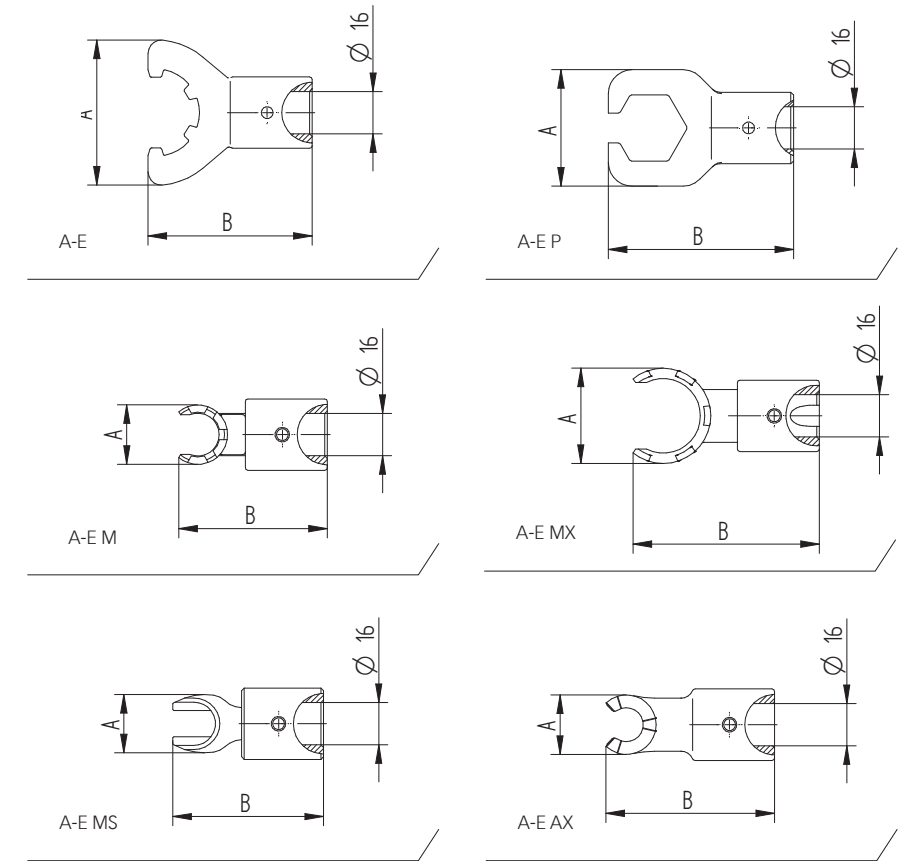
<b>A-E P</b>			
A-E 11 P	7152.11010	32	57
A-E 16 P	7152.16010	44	70
A-E 20 P	7152.20010	52	80

<b>A-E M</b>			
A-E 8 M	7153.08000	12	53
A-E 11 M	7153.11000	17	54
A-E 16 M	7153.16000	22	56
A-E 20 M	7153.20000	29	68
A-E 25 M	7153.25000	36	70

<b>A-E MX</b>			
A-E 8 MX	7158.08000	12	53
A-E 11 MX	7158.11000	17	54
A-E 16 MX	7158.16000	22	56
A-E 20 MX	7158.20000	29	68
A-E 25 MX	7158.25000	36	70

<b>A-E MS</b>			
A-E 8 MS	7154.08000	19	51
A-E 11 MS	7154.11000	22	57
A-E 16 MS	7154.16000	33	60
A-E 20 MS	7154.20000	42	73

<b>A-E AX</b>			
A-E 11 AX	7157.11000	16	62
A-E 16 AX	7157.16000	22	63
A-E 20 AX	7157.20000	26	64
A-E 25 AX	7157.25000	29	93
A-E 32 AX	7157.32000	37	95



Type	Part no.	D [mm]	L [mm]	Square □	
				[mm]	[inch]
<b>V-E AX Wrench Extension for ERAX Nuts</b>					
V-E 11 AX	7155.11000	16.5	60	6.35	1/4"
V-E 16 AX	7155.16000	22.5	80	6.35	1/4"
V-E 20 AX	7155.20000	26	95	9.525	3/8"
V-E 25 AX	7155.25000	29.5	105	12.7	1/2"
V-E 32 AX	7155.32000	37.5	115	12.7	1/2"

<b>V-E MX Wrench Extension for ERMX Nuts</b>					
V-E 8 MX	7159.08000	17	60	6.35	1/4"
V-E 11 MX	7159.11000	17	60	6.35	1/4"
V-E 16 MX	7159.16000	22.5	80	6.35	1/4"
V-E 20 MX	7159.20000	29	95	12.7	1/2"
V-E 25 MX	7159.25000	35	105	19.05	3/4"

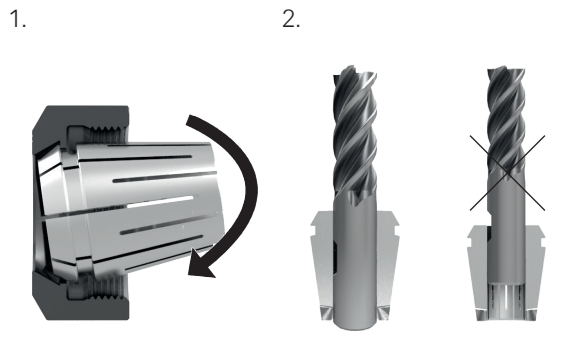


# Increase collet and tool life

Optimize your surface finishes and extend tool life by minimizing occurring vibrations during machining.


Always assemble correctly

First, clip the collet in the nut. Second, insert the tool shank more than  $\frac{2}{3}$  into the collet.



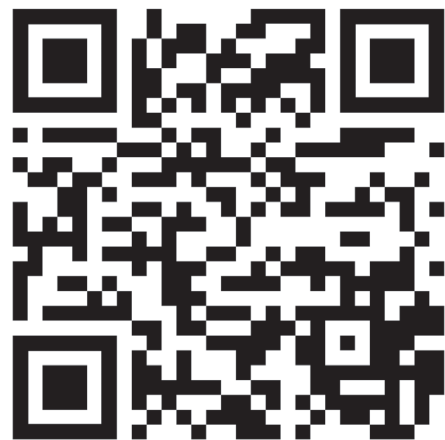
Listen for the click

Do not tighten the torque wrench further after the first click is heard.



## Additional Technical Information

The REGO-FIX Main Catalogue and YouTube have a wealth of technical information; so much that we can't fit it here! Below are QR codes for additional technical information on a number of Swiss-style products.



Catalogue Technical Pages



REGO-FIX YouTube

## Recommended tightening torque for ER clamping nuts (ft-lbs)

Collet size	Ø [mm]	Ø [decimal inch]	ER/ERC		ERB/ERBC		ERM/ERMC		ERMX/ERMXC		ERAX/ERAXC		ER MS	
			ER*	ER-GB	ER*	ER-GB	ER*	ER-GB	ER*	ER-GB	ER*	ER-GB	Collets [ft-lbs]	Collets [ft-lbs]
ER 8 MB	0.2–0.9	0.0078–0.035	–	–	–	–	4	–	4	–	–	–	4	0
ER 8	1.0–5.0	0.039–0.196	–	–	–	–	4	–	4	–	–	–	4	0
ER 11 MB	0.2–0.9	0.0078–0.035	6	–	–	–	6	–	6	–	6	–	6	0, I
ER 11	1.0–2.9	0.039–0.098	6	6	–	–	6	6	6	6	6	6	7	0, I
	3.0–7.0	0.118–0.256	24	16	–	–	16	13	16	13	24	21	7	0, I
ER 16 MB	0.2–0.9	0.0078–0.035	6	–	–	–	6	–	6	–	6	–	9	0, I
ER 16	1.0	0.039	6	–	5	–	6	–	6	–	6	–	9	0, I
	1.5–3.5	0.059–0.138	15	–	12	–	15	–	15	–	15	–	15	0, I
	4.0–4.5	0.157–0.177	30	30	25	25	18	–	18	–	30	30	15	I, II
	5.0–10.0	0.197–0.394	46	32	40	21	18	–	18	–	30	30	–	II
ER 20	1.0	0.039	12	–	10	–	12	–	12	–	12	–	9	0, I
	1.5–6.5	0.059–0.256	25	25	20	20	21	21	21	21	40	25	14	I, II
	7.0–13.0	0.276–0.512	60	60	60	60	21	21	21	21	40	25	14	I, II
ER 25	1.0–3.5	0.059–0.138	18	–	15	–	18	–	18	–	18	–	–	I, II
	4.0–4.5	0.157–0.177	40	40	35	35	24	24	24	24	40	40	–	I, II
	5.0–7.5	0.196–0.295	60	60	55	55	24	24	24	24	60	60	–	II, III
	8.0–17.0	0.315–0.669	80	60	80	60	24	24	24	24	60	60	–	II, III
ER 32	2.0–2.5	0.078–0.098	18	18	15	–	–	–	–	–	20	–	–	I, II
	3.0–7.5	0.118–0.291	100	100	95	65	–	–	–	–	80	65	–	II, III
	8.0–22.0	0.315–0.787	100	100	100	65	–	–	–	–	80	65	–	II, III

\*Includes ER standard and ER-UP

## Recommended tightening torque for ER clamping nuts (Nm)


Collet size	Ø [mm]	Ø [decimal inch]	ER/ERC		ERB/ERBC		ERM/ERMC		ERMX/ERMXC		ERAX/ERAXC		ER MS	
			ER*	ER-GB	ER*	ER-GB	ER*	ER-GB	ER*	ER-GB	ER*	ER-GB	Collets [Nm]	Collets [Nm]
ER 8 MB	0.2–0.9	0.0078–0.035	–	–	–	–	6	–	6	–	–	–	6	0
ER 8	1.0–5.0	0.039–0.196	–	–	–	–	6	–	6	–	–	–	6	0
ER 11 MB	0.2–0.9	0.0078–0.035	8	–	–	–	8	–	8	–	8	–	8	0, I
ER 11	1.0–2.9	0.039–0.098	8	8	–	–	8	8	8	8	8	8	10	0, I
	3.0–7.0	0.118–0.256	24	16	–	–	16	13	16	13	24	21	10	0, I
ER 16 MB	0.2–0.9	0.0078–0.035	8	–	–	–	8	–	8	–	8	–	12	0, I
ER 16	1.0	0.039	8	–	6.4	–	8	–	8	–	8	–	12	0, I
	1.5–3.5	0.059–0.138	20	–	16	–	20	–	20	–	20	–	20	0, I
	4.0–4.5	0.157–0.177	40	40	32	32	24	–	24	–	40	40	20	I, II
	5.0–10.0	0.197–0.394	56	44	56	44	24	–	24	–	40	40	20	II
ER 20	1.0	0.039	16	–	12	–	16	–	16	–	16	–	12	0, I
	1.5–6.5	0.059–0.256	32	32	24	24	28	28	28	28	52	35	20	I, II
	7.0–13.0	0.276–0.512	80	35	80	24	28	28	28	28	52	35	20	I, II
ER 25	1.0–3.5	0.059–0.138	24	–	20	–	24	–	24	–	24	–	–	I, II
	4.0–4.5	0.157–0.177	56	56	48	48	32	32	32	32	56	56	–	I, II
	5.0–7.5	0.196–0.295	80	80	72	72	32	32	32	32	80	80	–	II, III
	8.0–17.0	0.315–0.669	104	80	104	79	32	32	32	32	80	80	–	II, III
ER 32	2.0–2.5	0.078–0.098	24	24	20	–	–	–	–	–	24	–	–	I, II
	3.0–7.5	0.118–0.291	136	136	128	90	–	–	–	–	104	90	–	II, III
	8.0–22.0	0.315–0.787	136	136	136	90	–	–	–	–	104	90	–	II, III

\*Includes ER standard and ER-UP



# REGO-FIX▲

 4420 Anson Blvd., Whitestown, IN 46075, USA

 (317) 870-5959

 <https://regousa.com>