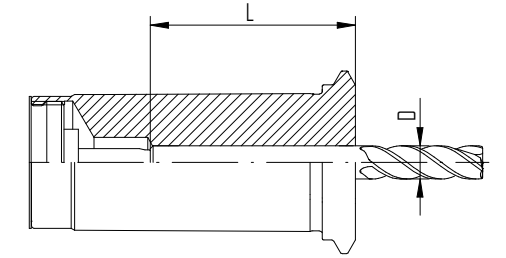


Presetting range of powRgrip® collets

D	D	PG 6/-CF		PG 6-S		PG 10/-CF		PG 10-S		PG 15/-CF/TW		PG 15-S		PG 15-L**		PG 25/-CF		PG 25-S		PG 25-L**		PG 32/-CF		PG 32-S		PG 32-L**	
		L [mm]		L [mm]		L [mm]		L [mm]		L [mm]		L [mm]		L [mm]		L [mm]		L [mm]		L [mm]		L [mm]		L [mm]		L [mm]	
		min.	max.	min.	max.	min.	max.	min.	max.	min.	max.	min.	max.	min.	max.	min.	max.	min.	max.	min.	max.	min.	max.	min.	max.	min.	max.
0.2-1.0	-	0.846	1.043*	-	-	0.787	0.945*	-	-	-	-	-	-	-	-	-	-	-	-	-	-	-	-	-	-	-	-
1.5	-	0.925	1.043*	-	-	0.63	0.787*	-	-	-	-	-	-	-	-	-	-	-	-	-	-	-	-	-	-	-	-
-	1/16"	0.925	1.043*	-	-	0.63	0.787*	-	-	-	-	-	-	-	-	-	-	-	-	-	-	-	-	-	-	-	-
2.0	-	0.945	1.043	-	-	0.984	1.181	-	-	-	-	-	-	-	-	-	-	-	-	-	-	-	-	-	-	-	-
2.5	-	0.945	1.043*	-	-	0.984	1.181	-	-	-	-	-	-	-	-	-	-	-	-	-	-	-	-	-	-	-	-
3.0	-	0.945	1.043	0.669	0.787	0.984	1.181	0.807	1.024	0.984	1.181	-	-	-	-	0.984	1.28	-	-	-	-	-	-	-	-	-	-
-	1/8"	0.945	1.043	0.669	0.787	0.984	1.181	0.807	1.024	0.984	1.181	0.709	0.984	-	-	0.984	1.28	0.709	0.984	-	-	-	-	-	-	-	-
3.5	-	-	-	-	-	0.984	1.181	-	-	0.984	1.181	-	-	-	-	0.984	1.28	-	-	-	-	-	-	-	-	-	-
4.0	-	0.925	1.043*	-	-	0.984	1.181	0.807	0.024	0.984	1.181	0.709	0.984	0.984	2.087	0.984	1.28	0.709	0.984	-	-	-	-	-	-	-	-
4.5	-	-	-	-	-	0.984	1.181	-	-	0.984	1.181	-	-	-	-	0.984	1.28	-	-	-	-	-	-	-	-	-	-
-	3/16"	-	-	-	-	0.984	1.181	0.807	0.024	0.984	1.181	0.709	0.984	-	-	0.984	1.28	0.709	0.984	-	-	-	-	-	-	-	-
5.0	-	-	-	-	-	0.984	1.181	-	-	0.984	1.181	0.709	0.984	0.984	2.087	0.984	1.28	-	-	-	-	-	-	-	-	-	-
5.5	-	-	-	-	-	0.984	1.181	-	-	0.984	1.181	-	-	-	-	0.984	1.28	-	-	-	-	-	-	-	-	-	-
6.0	-	-	-	-	-	1.181	1.378	0.925	1.142	1.299	1.496	1.024	1.299	1.299	2.087	1.299	1.594	1.024	1.299	1.299	2.559	1.319	1.61	-	-	-	-
-	1/4"	-	-	-	-	1.181	1.378	0.925	1.142	1.299	1.496	1.024	1.299	1.299	2.087	1.299	1.594	1.024	1.299	1.299	2.559	1.319	1.61	-	-	-	-
7.0	-	-	-	-	-	-	-	-	-	1.299	1.496	-	-	-	-	1.299	1.594	-	-	-	-	1.319	1.61	-	-	-	-
-	5/16"	-	-	-	-	-	-	-	-	1.299	1.496	1.024	1.299	1.299	2.087	1.299	1.594	1.024	1.299	1.299	2.559	1.319	1.61	-	-	-	-
8.0	-	-	-	-	-	-	-	-	-	1.299	1.496	1.024	1.299	1.299	2.087	1.299	1.594	1.024	1.299	1.299	2.559	1.319	1.61	-	-	-	-
9.0	-	-	-	-	-	-	-	-	-	1.299	1.496	-	-	-	-	1.299	1.594	-	-	-	-	1.319	1.61	-	-	-	-
-	3/8"	-	-	-	-	-	-	-	-	1.457	1.594	1.22	1.496	1.457	2.087	1.457	1.752	1.181	1.496	1.457	2.559	1.398	1.768	-	-	-	-
10.0	-	-	-	-	-	-	-	-	-	1.457	1.594	1.22	1.496	1.457	2.087	1.457	1.752	1.181	1.496	1.457	2.559	1.398	1.768	-	-	-	-
11.0	-	-	-	-	-	-	-	-	-	-	-	-	-	-	-	1.457	1.752	-	-	-	-	1.398	1.768	-	-	-	-
-	7/16"	-	-	-	-	-	-	-	-	-	-	-	-	-	-	1.457	1.752	-	-	-	-	1.398	1.768	-	-	-	-
12.0	-	-	-	-	-	-	-	-	-	1.634	1.772*	-	-	-	-	1.654	1.949	1.378	1.693	1.654	2.559	1.594	1.965	1.26	1.594	1.594	2.717
-	1/2"	-	-	-	-	-	-	-	-	1.634	1.772*	-	-	-	-	1.654	1.949	1.378	1.693	1.654	2.559	1.594	1.965	1.26	1.594	1.594	2.717
13.0	-	-	-	-	-	-	-	-	-	-	-	-	-	-	-	1.654	1.949	-	-	-	-	1.594	1.965	-	-	-	-
14.0	-	-	-	-	-	-	-	-	-	-	-	-	-	-	-	1.654	1.949	1.378	1.693	1.654	2.559	1.594	1.965	1.378	1.693	1.594	2.717
-	9/16"	-	-	-	-	-	-	-	-	-	-	-	-	-	-	1.654	1.949	-	-	-	-	1.594	1.965	-	-	-	-
15.0	-	-	-	-	-	-	-	-	-	-	-	-	-	-	-	1.654	1.949	-	-	-	-	1.594	1.965	-	-	-	-
-	5/8"	-	-	-	-	-	-	-	-	-	-	-	-	-	-	1.791	1.969	1.496	1.811	1.791	2.559	1.713	2.083	1.496	1.811	-	-
16.0	-	-	-	-	-	-	-	-	-	-	-	-	-	-	-	1.791	1.969	1.496	1.811	1.791	2.559	1.713	2.083	1.378	1.713	1.713	2.717
18.0	-	-	-	-	-	-	-	-	-	-	-	-	-	-	-	1.791	1.969	-	-	-	-	1.713	2.083	-	-	-	-
-	3/4"	-	-	-	-	-	-	-	-	-	-	-	-	-	-	1.87	1.969	1.575	1.87	1.87	2.559	1.791	2.161	1.457	1.791	1.791	2.717
20.0	-	-	-	-	-	-	-	-	-	-	-	-	-	-	-	1.87	1.969	1.575	1.87	1.87	2.559	1.791	2.161	1.457	1.791	1.791	2.717
22.0	-	-	-	-	-	-	-	-	-	-	-	-	-	-	-	-	-	-	-	-	-	1.791	2.161	-	-	-	-
-	7/8"	-	-	-	-	-	-	-	-	-	-	-	-	-	-	-	-	-	-	-	-	1.791	2.161	-	-	-	-
25.0	-	-	-	-	-	-	-	-	-	-	-	-	-	-	-	-	-	-	-	-	-	1.949	2.283	1.614	1.949	1.949	2.717
-	1"	-	-	-	-	-	-	-	-	-	-	-	-	-	-	-	-	-	-	-	-	1.949	2.283	1.614	1.949	1.949	2.717



PG/PG-CF/PG-CB / PG-S/PG-L

powRgrip Collet Index

PG Standard – PG Series / -CF

PG Coolant-Flush – PG Series / -CF

PG CoolBore (CB) – PG Series / -CF

PG ThinWall (TW) – PG Series / -CF / TW

PG Coolbore-S (CB-S) – PG Series -S

PG Short – PG Series -S

PG Long – PG Series -L

Pull-Stud Torque Values

Steep taper	maximum tightening torque
SK, BT, CAT 30	25 Nm / 18 ft-lbs
SK, BT, CAT 40	50 Nm / 37 ft-lbs
SK, BT, CAT 50	100 Nm / 74 ft-lbs

Higher tightening torques can lead to deformation of the steep taper!

REGO-FIX USA
 4420 Anson Blvd / Whitestown / IN 46075 / USA
 Toll Free 800-999-7346 / Phone 317-870-5959
 info.usa@rego-fix.com / www.RegoUSA.com



*CF not available **PG-L without stop screw

Tolerance charts

Outside dimensions (Shafts)

Tolerances on dimensions in μm

Nominal size range in mm	g4	g5	g6	g7	h4	h5	h6	h7	h8	h9	h10	h11	h13
from 1	-2	-2	-2	-2	0	0	0	0	0	0	0	0	0
to 3	-5	-6	-8	-12	-3	-4	-6	-10	-14	-25	-40	-60	-140
over 3	-4	-4	-4	-4	0	0	0	0	0	0	0	0	0
to 6	-8	-9	-12	-16	-4	-5	-8	-12	-18	-30	-48	-75	-180
over 6	-5	-5	-5	-5	0	0	0	0	0	0	0	0	0
to 10	-9	-11	-14	-20	-4	-6	-9	-15	-22	-36	-58	-90	-220
over 10	-6	-6	-6	-6	0	0	0	0	0	0	0	0	0
to 18	-11	-14	-17	-24	-5	-8	-11	-18	-27	-43	-70	-110	-270
over 18	-7	-7	-7	-7	0	0	0	0	0	0	0	0	0
to 30	-13	-16	-20	-28	-6	-9	-13	-21	-33	-52	-84	-130	-330
over 30	-9	-9	-9	-9	0	0	0	0	0	0	0	0	0
to 50	-16	-25	-20	-34	-7	-11	-16	-25	-39	-62	-100	-160	-390

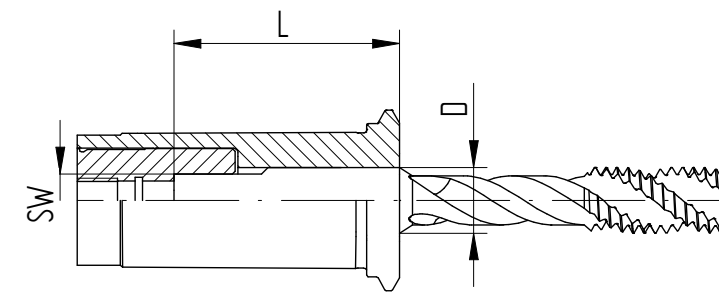
Inside dimensions (Bores)

Tolerances on dimensions in μm

Nominal size range in mm	G4	G5	G6	G7	H4	H5	H6	H7	H8	H9	H10	H11	H13
from 1	+5	+6	+8	+12	+3	+4	+6	+10	+14	+25	+40	+60	+140
to 3	+2	+2	+2	+2	0	0	0	0	0	0	0	0	0
over 3	+8	+9	+12	+16	+4	+5	+8	+12	+18	+30	+48	+75	+180
to 6	+4	+4	+4	+4	0	0	0	0	0	0	0	0	0
over 6	+9	+11	+14	+20	+4	+6	+9	+15	+22	+36	+58	+90	+220
to 10	+5	+5	+5	+5	0	0	0	0	0	0	0	0	0
over 10	+11	+14	+17	+24	+5	+8	+11	+18	+27	+43	+70	+110	+270
to 18	+6	+6	+6	+6	0	0	0	0	0	0	0	0	0
over 18	+13	+16	+20	+28	+6	+9	+13	+21	+33	+52	+84	+130	+330
to 30	+7	+7	+7	+7	0	0	0	0	0	0	0	0	0
over 30	+16	+25	+20	+34	+7	+11	+16	+25	+39	+62	+100	+160	+390
to 50	+9	+9	+9	+9	0	0	0	0	0	0	0	0	0

Presetting range of PG-TAP collets with internal square

Dimensions [mm/inch]	PG 15-TAP [inch]	PG 25-TAP [inch]	
		L min.	L max.
D 3.5	2.7	1.063	1.142
0.141"	0.110"	1.063	1.142
0.168"	0.131"	1.063	1.142
4.5	3.4	1.063	1.142
0.194"	0.152"	1.142	1.221
0.220"	0.165"	1.142	1.221
6	4.9	1.142	1.221
0.255"	0.191"	1.142	1.221
7	5.5	1.142	1.221
8	6.2	1.319	1.417
0.318"	0.238"	-	-
9	7	1.358	1.457
0.367"	0.275"	-	-
0.381"	0.286"	-	-
10	8	1.398	1.496
11	9	-	-
12	9	-	-
14	11	-	-
16	12	-	-



PG-TAP